

Cleveland Twist Drill Co.

CLEVELAND NEW YORK CHICAGO

TOOLS OF QUALITY—sold by all Principal Dealers
 TWIST DRILLS
 REAMERS
 TAPS
 CUTTERS, Etc.

HANGERS,
 COUPLINGS, Etc., Etc.

E. ATWATER STREET
 DETROIT, MICH.

PITTSBURG SHAFTING CO. of Detroit

SHAFING, SUREW SLOUCH,
 Cold Rolled Steel
 All sizes in stock.

McARTHUR, CORNEILLE & CO.

310 to 316 ST. PAUL ST.
 MONTREAL

OILS, CHEMICALS, DYESTUFFS
 AND
 TANNING EXTRACTS

Waxes, Gums, Shellacs,
 Glues, Gelatines, Etc.

CANADIAN AGENTS
 FOR THE

BERLIN ANILINE CO.
 BRITISH ALIZARINE CO. and
 MILLER'S TANNING EXTRACT CO.

TEON BELTING

Durability of Teon

Not affected by less
 than 230° Fhr., 18'
 above boiling.

It is water and
 steam proof.

It is not affected by
 acids, alkalies and
 other chemicals.

Dust, dirt and grit
 are effectually repelled.

It is absolutely not
 affected by the rays of
 the hottest sun or the
 keenest frost, no
 matter how constant or
 interchangeable these
 conditions may be.

THE GREATEST
 BELT in the world for
 use in exposed places.

P. H. WILBY

Solo Agent for Canada

27½ Front Street East, TORONTO

LEATHER BELTING
 CAPATA BELTING (Balata Type)
 CAMELS HAIR BELTING
 LACE LEATHER, Etc.

ENGINEERS—FOUNDERS—MACHINISTS

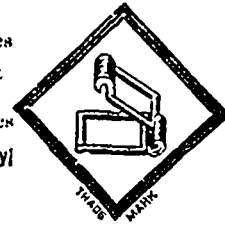
BUHL

MALLEABLE
 COMPANY,
 DETROIT,
 MICH.

ELEVATING, CONVEYING MACH'Y.

Malleable or Steel Elevator Buckets.

Chain
 Specialties
 Sprocket
 Wheels.
 Appliances



Detachable
 or Riveted
 CHAINS

Material
 Will Please
 You.

STANDARD DESIGN — UNEXCELLED QUALITY.

Excellent Location for Prompt
 Deliveries in Dominion of Canada.

THE UNITED ELECTRIC CO.

LIMITED

MANUFACTURERS OF

Dynamos,
 Motors,
 Arc Lamps
 ETC.



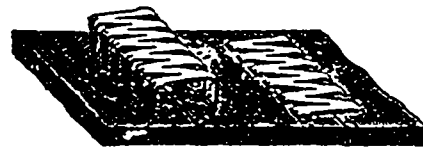
Head Office, - 134 KING ST. W., TORONTO, ONT.

H. & T. STEEL
 ANGULAR WIRE

The J. C. McLAREN BELTING CO.
 MONTREAL.

BRISTOL'S PATENT STEEL BELT LACING

— ONE HUNDRED SIZES —



READY TO APPLY FINISHED JOINT

Greatest Strength with Least Material

EASILY APPLIED and LOW IN PRICE

Saves Time, Saves Belts, Saves Money

SAMPLES SENT FREE

THE BRISTOL CO.
 WATERBURY, CONN.

Smith's Falls Malleable
 Castings Company, Limited

CAPACITY 4,000 TONS

MANUFACTURERS
 OF

MALLEABLE
 IRON
 CASTINGS
 (Labor Gazette)

Smith's Falls, Ont., Can.

WM. & J. G. GREY Machinery and Supplies for Flour, Paint, Spice
 Mills, Cement and Soap Works, Tanneries, etc. Elevating
 and Power Transmission Machinery of all kinds.

HAMILTON, ONT.

Manufacturers of

Ceylon Plumbago SUPPLIES

Ships also Extra Fine Quality

MOULDING SAND

Pipe and Gate Sand,
 WITH FOR PRICES.