

## Moonstone Lighting, and a Woman's Beauty

Moonstone globes and dishes diffuse and mellow the electric light, adding to everything a new quality of charm.

They are decorated to match wall-papers and draperies—an important consideration when all the world is reaching after things harmonious, symphonic.

It is the modern way of lighting a house—ininitely more beautiful than the old, and cheaper. MOONSTONE glass so multiplies the light that it is not necessary to use so many high-power lamps.



No. 6024. Semi-Indirect Unit

Write for our

### MOONSTONE BULLETIN No. 1

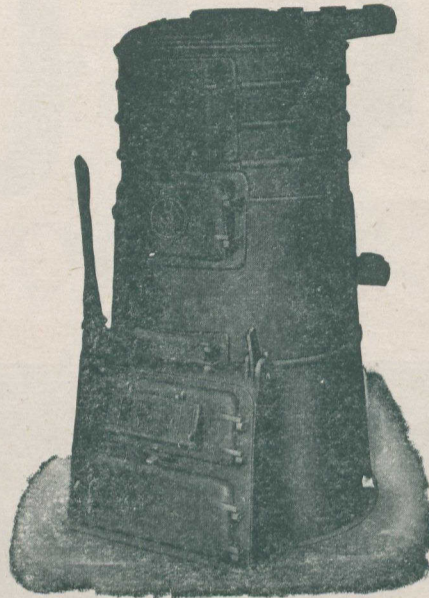
and at the same time give us the dimensions of your rooms and passageways. Our engineering department will advise you how to proceed, *and at no cost to you.*

Made in Canada.

**Jefferson Glass Company, Limited**  
388 Carlaw Avenue, Toronto

## The "KING" Heating System

With a "KING" Hot Water Boiler and "KING" Radiators, solves the house-heating problems. . .



No. 6 High Base "King" Boiler, showing double shaker.

The "KING" Boiler has ALL the latest improvements in operating equipment and fuel saving features known to boiler construction.

### TROUBLE PROOF GRATES

The "KING" patented grates and shaking mechanism are of the side lever adjustable construction and are simple enough for a child to understand, yet the most efficient ash remover yet produced. No bolts or pins are used in attaching grates to the connecting bar.

GET OUR BOOKLET "COMFORTABLE HOMES."  
It explains *very* thoroughly.

**STEEL and RADIATION, Limited**  
(HEAD OFFICE)

Fraser Ave., Toronto

Montreal, 138 Craig St. W. Quebec, 101 St. John St.

Agencies in all leading cities.

## CANADIAN PACIFIC

BEST TRAIN FOR WINNIPEG  
and points East thereof

### GATE CITY EXPRESS

LEAVE TORONTO - - 2.30 p.m. } DAILY  
ARRIVE WINNIPEG - - 8.00 a.m. }  
(Second Day)

THROUGH EQUIPMENT: Compartment Library Observation Car, Standard Sleeping Cars, Tourist Sleeping Car, Dining Car, First Class Coaches, Colonist Car.

### VANCOUVER EXPRESS

LEAVE TORONTO - - 10.20 p.m. } DAILY  
ARRIVE VANCOUVER - 11.30 p.m. }

THROUGH EQUIPMENT: Compartment Library Observation Car, Standard Sleeping Car, Tourist Sleeping Car, Dining Car, First Class Coaches, Colonist Car.

Particulars from Canadian Pacific Agents or write M. G. MURPHY, D.P.A., C. P. Ry., Toronto.

## HOTEL

# Victoria

Broadway, Fifth Avenue & 27th Street

SPECIAL RATE FROM MAY 1st

Rooms with privilege of bath - \$1.50  
Rooms with private bath - 2.00

Accommodations for 500 persons.

Geo. W. Sweeny, Prop.

Angus Gordon, Manager,  
Late of King Edward Hotel, Toronto, Can.

# NEW YORK

## Steadiness and Staunch Seaworthiness

Are the well known attributes of the  
CANADIAN NORTHERN STEAMSHIPS.

### R.M.S.S. "Royal Edward," "Royal George"

The fastest steamers in the British Canadian Service, which have created a new standard of appointment and exclusive features in all classes of accommodation.

### Winter Sailings

| From St. John, N.B. |              | From Bristol  |
|---------------------|--------------|---------------|
| Wed., Jan. 14, 1914 | Royal George | x             |
| Wed., Jan. 28, 1914 | Royal Edward | Wed., Feb. 11 |
| x                   | Royal George | Wed., Feb. 25 |
| Wed., Feb. 25, 1914 | Royal Edward | Wed., Mar. 11 |
| Wed., Mar. 11, 1914 | Royal George | Wed., Mar. 25 |
| Wed., Mar. 25, 1914 | Royal Edward | Wed., Apr. 8  |

xWithdrawn for annual inspection.

Cabin de luxe—Suites and rooms with private baths at rates that appeal.

For all information apply to Steamship Agents or to the following offices of the Company:

52 King St. E., Toronto, Ont; 226 St. James St., Montreal, Que.; 583 Main St., Winnipeg, Man.; 123 Hollis St., Halifax, N.S.; Canada Life Building, Prince William St., St. John, N.B.

