

Office for... C. F. R. Building, Cor... 475 per month. Tw... second floor, overlooking... E. H. WILLIAM... King Street

PROBS—Fair nig

CON...

Rec...

BIG CAMPA... IS UNDE... FOR TH...

Two Million Dol... Raised in... Day...

MASSEY HALL

Such Enthusiasm... Been Seen at... ronto Gath...

If the enthusiasm o... crowd that thronged... night to give the \$2... of the Toronto and Yo... send-off could be h... how the people o... the appeal then there... a doubt that the m... during the next t...

The auditorium wa... they long before 8 o... and enthusiasm they... Sir William Mulock... Toronto and York Po... chairman of the mov... on the platform. A... ver of representative... At the rear of the... "Highlanders" Ban... and around them at... the hall were sever... Boy Scouts, a num... and stage of the shir... during the plat... numbers by the bat... At the conclusion... well expressed the... well satisfied at the... had been inaugurat... truely optimistic. Mill... said that it was or... grating meetings... only.

Tells the... what the story w... of the campaign... "Huck" in opening... "Something more... you entrusted the... Patriotic Fund wi... for the depend... lighting the en... then referred to t... the city hall. Y... in conclusion t... "It had become... clothing, so the... the fund was cons...

(Continued on Pa...

: W... T...

A TTEMPTS... positions a... of these a... Nieuport region, in... bardment, in wh... hostile infantrym... French positions... them into hiding... might were speed... the Ypres Canal... lined infantry, m... attacks against t... road from Arras... fire.

This renewa... general offensiv... some local adva... efforts at concea... the Russians or... the Germans ha... bargained for, e... The allies in the... and artillery, w...

The Russian... records artillery... bombs by the A... northwest of C... continuance of... the bitterly cold

"My Year of the Great War" By Frederick Palmer. A book in demand on account of his approaching lecture at Massey Hall. A book of thrilling interest—\$1.25.

# THE ROBERT SIMPSON COMPANY LIMITED

**Photo Supplies**  
700 packets Gaslight Gravura Printing Paper (postcards), size 3 1/2 x 5 1/2. Regular 15c. Monday, 3 for 15c.  
**ACID-FIXING POWDERS.**  
200 1/2-lb. packets, all fresh stock. Regular 15c. Monday, 2 packets for 15c.

## Dinnerware

"Bristol" Theodore Haviland Dinner Set, \$68.50—Finest quality French Limoges china. 102 pieces, pink floral decoration on ivory band, gold handles and edges. Monday, \$68.50.  
Theodore Haviland Dinner Set, \$68.00—Pretty green and brown border, with dice effect, 102 pieces, gold edges and handles. Monday, \$68.00.  
"Chelsea" Theodore Haviland Dinner Set, \$77.00—Finest quality Limoges china with green rope border, 102 pieces. Monday, \$77.00.  
"Patricia" Dinner Set, \$15.00—Wedgwood's Imperial porcelain, 97 pieces, with gold tracings, kermis shaped cup. Monday, \$15.00.  
Regular \$9.25 Dinner Set for \$6.95—"Prisco" English semi-porcelain, good quality, 97 pieces, blue floral decoration. Monday, \$6.95.  
\$15.00 "Furnival" Dinner Set, \$12.00—Minton border decoration, English semi-porcelain, 97 pieces. Monday, \$12.00.

Gibson's Teapots, 25c—A good assortment of 2, 3, 4 and 5-cup sizes. Your choice Monday at 25c. Blue Willow Bowls, in three sizes, for 15c, 25c and 35c each.

Cheese Dishes, 49c—Various shapes and decorations to choose from. Monday, 49c.  
Guernsey Bowls—Round Pudding Bowls, 6 and 7-inch, for 10c and 12c each.

CLOVER LEAF WARE. Cups and Saucers, 9c each. Dinner Plates, 9c each.

Soup Plates, 8c each. Tea Plates, 7c each. Bread and Butter Plates, 5c. Vegetable Dishes, 59c each. Milk Jugs, all sizes, at 15c.

**Glassware**  
For \$1.00 Complete—One pair of Glass Candlesticks with candles, shades and holder, in colors pink and green. To clear Monday, \$1.00.  
\$1.00 dozen Water Tumblers for 50c each.  
20c dozen Water Tumblers for 2c each.  
25c Celery Trays for 19c each.  
15c Handled Jelly Dish for 10c each.  
25c Syrup Jug for 10c each.  
50c Orange Bowl for 25c each.

Glassware at 8c—Your choice of the following items: Comports, Fruit Bowls, Pickle Trays, Custard Cups, Plates, etc. Monday, 8c each.  
49c Water Set at 29c—A seven-piece set, includes 1 jug and 6 tumblers. Monday, 29c set.  
49c Fruit Set for 29c—6 fruit nappies and 1 bowl, in Colonial design. Monday, 29c.

**Toilet Sets for Today**  
Toilet Sets at \$2.75—Pretty floral decorations on fine quality porcelain, 10 pieces. Monday, \$2.75.  
Odd Bedroom Ware—Decorated Ewers, 99c; Basins, 99c; Chambers, 49c.  
White or Ivory Ewers, 59c; Basins, 99c; Chambers, 34c.

**Hardware at Other Prices**  
Washing Machines, "The Standard" Regular \$3.25. Monday, \$3.98.  
Sani-Genic Polish Mop, Regular 75c. Monday, 69c.  
\$7.50 and \$11.00 Case Carver Sets, \$4.95—Sheffield make, genuine staghorn handles, shear steel blade, five-piece sets, in leatherette cases. Regular \$7.50 to \$11.00; sets Monday at \$4.95.  
Perfection Oil Heaters, smokeless and odorless, large size; 25 only to sell Monday at each, \$3.50.  
Imperial Clothes Wringers, warranted rubber rolls, enclosed cogs. Regular \$4.00. Monday, \$3.39.

## Today's Boot List

**MEN'S \$4.00 TO \$6.00 BOOTS, MONDAY, AT \$2.99.**  
A splendid assortment of high-grade, seasonable footwear, in button, lace and Blucher styles; gunmetal calf, velour calf, vici kid, tan Russia calf and winter calf leathers; light, medium and heavy oak bark tanned Goodyear welt soles; made by well-known custom grade manufacturers; all sizes 5 to 14; several widths. Regular \$4.00 to \$6.00. Monday, \$2.99.

## \$4.00 TO \$6.00 BOOTS FOR WOMEN AT \$2.49.

Over 600 pairs of new and popular footwear for street, dress and business wear; some of the leathers are patent colt, gunmetal calf, dull and polished kid and tan Russia calf, also black velvet, dull kid, black cloth and colored tops; light, medium and heavy soles; narrow, medium and wide toes; all styles of heels; a good range of sizes from 2 to 7 in the lot. Regular \$4.00 to \$6.00. Monday, \$2.49.

## SCHOOL BOOTS FOR BOYS, \$1.69.

Made from strong, long wearing, polished box kip, in Blucher style; heavy, solid leather, soles; full, round, easy-fitting toes; sizes 11 to 13, Monday, \$1.69. Same style, sizes 4 to 5, Monday, \$1.99.

## CHILDREN'S BOOTS, 95c.

Neat, easy-fitting little boots for every-day wear; button and lace styles, made from strong dongola kid, with patent toe caps; Educator toe shapes; medium weight soles; spring and low heels; sizes 5 to 10 1/2, for 95c.

## Axminster Rugs

**NEW STOCK SEAMLESS RUGS.**  
Magnificent range of designs and colors, including self green, blues and rose centres, with pretty chintz borders; beautiful Chinese effects, in blues and drabs; also a fine range of Oriental designs:  
6.0 x 6.0 .. \$14.25 9.0 x 9.0 .. \$31.95  
6.0 x 7.6 .. \$17.75 9.0 x 10.6 .. \$37.25  
7.6 x 7.6 .. \$22.50 9.0 x 12.0 .. \$42.50  
6.0 x 9.0 .. \$21.50 10.6 x 12.0 .. \$49.75  
6.0 x 10.6 .. \$24.95 9.0 x 13.6 .. \$48.00  
7.6 x 9.0 .. \$26.75 10.6 x 12.0 .. \$54.50  
7.6 x 10.6 .. \$31.00 12.0 x 15.0 .. \$71.50

## TAPESTRY CARPET.

Hundreds of rolls of inexpensive Scotch Tapestry Carpet, in Oriental, floral and two-tone effects; some with stairs to match.  
18 inches wide, 45c, 50c and 55c yard.  
22 1/2 inches wide, 50c, 55c and 60c yard.  
27 inches wide, 60c, 75c and 80c yard  
Nairn's Scotch Linoleum, 50c—A good range of patterns in block, tile, matting and hardwood effects; 2 yards wide only. Square yard, 50c.  
**MOHAIR RUGS AT ATTRACTIVE PRICES.**  
Silky Mohair Rugs, in a great variety of shades; curl centres with plain push borders, in rose, greens, blue, terra cotta, brown and black.  
24 x 48 inches ..... \$3.15  
27 x 54 inches ..... \$3.85  
30 x 64 inches ..... \$5.25  
36 x 72 inches ..... \$7.00

Brightener for cleaning waxed floors, removes the dirt without removing the waxed finish. One-pint can, Monday, 39c.  
Linen Clothes Lines, 72 feet long; a very superior line. Monday, 39c.  
Waste Paper Baskets, round or square. Regular 50c to 75c. Monday, 39c.  
Nickel-Plated Trays, satin finish, size 10 x 12 inches. Monday, 39c.  
Enamel Covered Saucepans, 3 and 4-qt. sizes, blue and white enamel, 39c.  
Tea and Coffee Pots, 1 and 1 1/2-qt. sizes, white or gray enamel, 39c.

**These at 39c**  
Preserving Kettles and Large Lipped Saucepans, 39c.  
Bread Boxes, pearl gray, japanised, 13 inches long, 39c.  
Furnace Shovel, with long "D" top handle, 39c.  
Double Boilers, gray enamel, 1 1/2 or 2-qt. size, 39c.

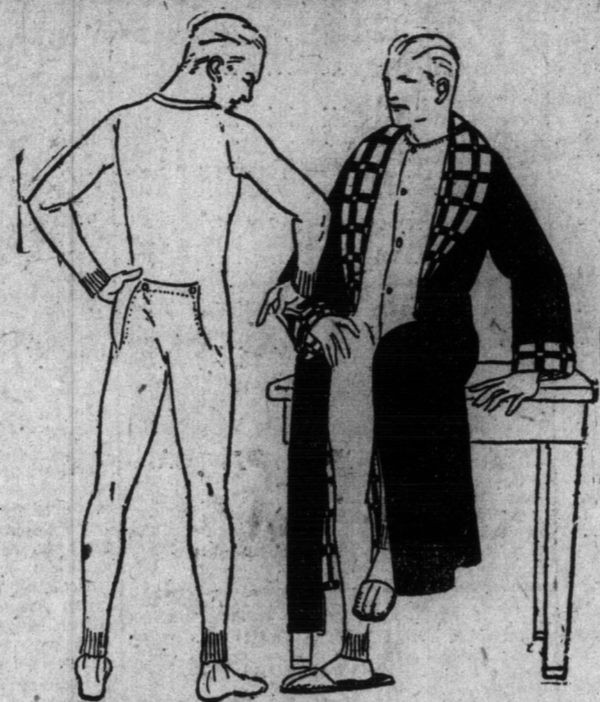
**THE MEATS.**  
Round Steak Tender Beef, lb. 20c.  
Stewing Beef, boneless, 2 lbs. 25c.  
Brisket Boiling Beef, lb. 13c.  
Chops of Young Lamb, lb. 25c.  
Choice Veal Chops, lb. 25c.  
Loin Pork Chops, lb. 25c.  
Family Sausage, our own make, lb. 12 1/2c.  
Breakfast Bacon, sliced, mild, lb. 25c.  
Pure Lard, 1 lb. prints, 17c.  
Head Cheese, lb. 10c.  
Wieners, special, 2 lbs. 25c.  
Spiced Beef Ham, cooked, special lb. 35c.

**THE GROCERIES.**  
Monarch Flour, quarter bag, 75c.  
Finest Canned Corn, only 6 tins to a customer, 8 tins 21c.  
Diamond Cleanser, 3 tins 20c.  
Fels Naptha Soap, per bar 5c.  
Comfort and Surprise Soap, 6 bars 25c.  
Comfort and Taylor's Borax Soap, 6 bars 25c.  
Simpson's Big Bar Soap, per bar 10c.  
R.S. Soap, per bar 4c.  
Heather Brand Soap, 7 bars 25c.  
Wheen's Delight Soap, per bar 4c.  
Pearline, large package 10c.  
Soap Chips, in bulk, 2 lbs. 15c.

**1845 Soap Powder, large package, 3 packages 25c.**  
Ammonia Powder, 4 packages 25c.  
Mack's No Rub, 6 packages 25c.  
Old Dutch Cleanser, 3 tins 25c.  
Sapolio, per cake 8c.  
Babbitt's Cleanser, 6 tins 25c.  
Napha Powder, package 5c.  
Goda Dust Washing Powder, large package 23c.  
Lux Washing Powder, 3 packages 25c.  
Taylor's Soap Powder, 2 packages 9c.  
Famshine Cleanser, 3 tins 25c.  
Royal Blue, 2 packages 8c.  
White Laundry Starch, package 8c.  
1,000 lbs. Pure Celona Tea of uniform quality and fine flavor, black or mixed, Monday, 2 1/2 lbs. 74c.

**VEGETABLES.**  
Choice Sweet Potatoes, 6 lbs. 25c.  
Canadian Onions, half peck, 15c.  
Carrots or Beets, small basket 8c.

**POULTRY FOOD.**  
Mixed or Scratch Feed, all clean grain 25 lbs. 63c; 100 lbs., \$2.35.  
Bran or Shorts, 10 lbs., 20c; 100 lbs., \$1.75.  
Mica Grit or Oyster Shell, 10 lbs. 10c.



## Trousers

200 PAIRS OF MEN'S WORK PANTS, SPECIAL, \$1.25.

They are made from strong tweeds, in browns, and gray and brown mixture, in neat stripe patterns; strongly tailored, and finished with three pockets; sizes 32 to 42. Special, \$1.25.

## BETTER QUALITY WORSTED TROUSERS AT \$4.50.

Made from exceptionally fine English worsted cloth, in gray, in neat stripe pattern; best finish and tailoring; sizes 32 to 44. Monday, \$4.50.

## Linen Closet Supplies

**AT EXCEPTIONAL PRICES TODAY.**  
\$2.25 Sheets, clearing at \$1.69. Bleached cotton, heavy quality; large size, 80 x 100 inches; 2-inch top hem and 1-inch bottom hem. Regular \$2.00 pair. Monday, pair, \$1.69.  
Hemstitched Pillow Cases, sizes 42 x 33 and 45 x 33 inches. Monday, 3 pairs for \$1.00.  
Big clearing of mill-ends and remnants of Sheetings and Pillow Cottons, hundreds of pieces in lengths of from 1 to 4 yards. All at half price for quick selling.  
No phone or mail orders.  
Nainsook, fine quality, 36 inches wide. Monday, yard, 12 1/2c.  
Factory or Unbleached Cotton, 36 inches wide; 3000 yards. Monday, yard, 9c.  
White Crochet Bedspreads, closely woven, hemmed ends; size 72 x 90 inches. Monday, \$1.19.  
White Union Wool Blankets, warm and serviceable; size 72 x 84 inches. Monday, pair, \$3.79.  
White Flannelette, 25 inches wide, 2500 yards. Monday, 10 yards for 79c.  
Huckaback Bedroom Towels, fine quality, hemmed ends. Monday, pair, 39c.  
Checked Glass Towelling, all linen, splendid drying quality, 26 inches wide. Regular 20c yard. Monday, yard, 18c.  
Damask Table Cloths, all linen, pretty bordered designs; size 2 x 2 1/2 yards. Monday, \$2.19.

Men's High-Grade Underwear, of fine Botany, Belgian and English yarns. The lot includes "Wolsey," "Bodyguard," "Nelson," "Stralian," and "Dreadnought" brands; all closed crotch styles, elastic ribbed and flat knit weaves; all sizes in the lot, but not all sizes in each range; sizes 32 to 42. Regular \$4.50, \$5.00, \$5.50 and \$6.00. Monday, \$3.69.

## MEN'S \$1.25 PLEATED NEGLIGE SHIRTS, 69c.

Mercerized stripes, pleated fronts and cross-bar pleats; blacks, blues, mauve, gray or brown stripes; coat styles and double French cuffs. Regular \$1.25. Monday, 69c.

## \$5.00 AND \$6.00 SWEATER COATS, \$3.95.

Men's Pure Wool Coats, pure Botany wool yarns; plain and fancy stitch; gray, gray and navy, gray and cardinal, maroon, brown or khaki; guaranteed fast colors; high storm collar; sizes 34 to 44. Regular \$5.00 and \$6.00. Monday, \$3.95.

## Men's Bath Robes, Special \$3.65

From an English blanket cloth, in red and gray fancy patterns; sizes 36 to 46. Special, at \$3.65.

"Sure I did! Got an extra pair. Good work, eh?"

## Boys' Suits \$4.95

**EXTRA BLOOMERS WITH SACK SUIT.**  
The 200 Suits clearing today are smartly tailored from cheviot tweeds, in brown or gray. The brown comes in check pattern, and gray in narrow stripes; cut Norfolk style, with full cut bloomers; the extra bloomers cut from the same goods; sizes 26 to 34. Monday, \$4.95.

## THE NEW MARKET

Telephone Adelaide 6100

**These at 39c**  
Towel Bars, 1/2 x 15 or 18 inches, nickel-plated, 39c.  
Bath Seats, oak finish, adjustable steel ends, 39c.  
Gray Enamel Daisy Kettles, 2-qt. size, 39c.  
Ironing Boards, size 12 x 60 inches long, 39c.  
Bake Board, with side, size 18 x 24 inches, 39c.

## Toilet Requisites

Satinwood Hair Brushes, Regular price \$1.25. Special 95c.  
Tooth Brushes, clear handles, with hand-drawn bristles. Regular price 15c. Special 10c.  
Grained White Celluloid Combs. Regular price \$1.25. Special 95c.  
White Celluloid Hand Mirrors. Regular price 25c. Special 15c.  
Nail Files. Regular price 10c. Special 7c.  
Sweetheart Talcum Powder. Special 1c.  
Violet Witch Hazel Toilet Cream, for chapped hands. Special 15c.  
Springflower Massage Cream. Special 30c.  
Odorono Deodorant. Special 5c.  
War Stamps Extra.

## These at 39c

Royal Floor Wax, a strictly high-grade wax, 1-lb. tin, 39c.  
Folding Clothes Racks, three-fold, 4-foot high. Regular 45c to 75c. Monday, 39c.  
Sani-Genic Polish for use on Sani-Genic mop, one-pint size, regular 50c. Monday 35c.  
Toilet Paper Holders, ebony finished roller, 39c.  
Warder Shine Silver Polish, 25c.  
Japanned Coal Scuttles, 25c.

## Men's Furnishings

\$4.50, \$5.00, \$5.50 AND \$6.00 COMBINATIONS, \$3.69.

Men's High-Grade Underwear, of fine Botany, Belgian and English yarns. The lot includes "Wolsey," "Bodyguard," "Nelson," "Stralian," and "Dreadnought" brands; all closed crotch styles, elastic ribbed and flat knit weaves; all sizes in the lot, but not all sizes in each range; sizes 32 to 42. Regular \$4.50, \$5.00, \$5.50 and \$6.00. Monday, \$3.69.

## MEN'S \$1.25 PLEATED NEGLIGE SHIRTS, 69c.

Mercerized stripes, pleated fronts and cross-bar pleats; blacks, blues, mauve, gray or brown stripes; coat styles and double French cuffs. Regular \$1.25. Monday, 69c.

## \$5.00 AND \$6.00 SWEATER COATS, \$3.95.

Men's Pure Wool Coats, pure Botany wool yarns; plain and fancy stitch; gray, gray and navy, gray and cardinal, maroon, brown or khaki; guaranteed fast colors; high storm collar; sizes 34 to 44. Regular \$5.00 and \$6.00. Monday, \$3.95.

## Men's Bath Robes, Special \$3.65

From an English blanket cloth, in red and gray fancy patterns; sizes 36 to 46. Special, at \$3.65.



"Sure I did! Got an extra pair. Good work, eh?"

## Boys' Suits \$4.95

**EXTRA BLOOMERS WITH SACK SUIT.**  
The 200 Suits clearing today are smartly tailored from cheviot tweeds, in brown or gray. The brown comes in check pattern, and gray in narrow stripes; cut Norfolk style, with full cut bloomers; the extra bloomers cut from the same goods; sizes 26 to 34. Monday, \$4.95.

## These at 98c

Regular \$1.75, \$2.25 and \$2.75. Monday, at 98c.

Galvanized Iron Wash Boiler, size 8 or 9. Regular \$1.50. Monday, at 98c.

Folding Ironing Tables, strong and rigid, folds into small space when not in use. Regular \$1.50. Monday, 98c.

Shoe Shine Stool, hardwood, nicely finished, with place for brushes, etc., under cover. Regular \$1.50. Monday, 98c.

Fibre Wash Tubs, any size. Regular up to \$1.40. Monday, 98c.

Willow Clothes Baskets, large size. Regular \$1.50. Monday, 98c.

Potts' Sad Irons, best Canadian make, full nickel finish, three irons, stand and handle. Complete, Monday, 98c set.

Garbage Cans, large size, ball handle, with cover. Monday, 98c.

Brush Floor Brooms, a very superior grade, 14 inches wide, with handle. Regular \$1.50. Monday, 98c.

Bathroom Mirrors, white enamel frames, plate glass mirror; size 10 x 14 inches. Monday, 98c.

Glass Shelves, size 5 x 18 inches, complete with brackets and screws. Monday, 98c.

Two-Burner Gas Hot Plate. Regular value up to \$1.75. Monday, 98c.

Coaster Sinks, glass bottom, nickel-plated rim sides. Regular \$1.50. Monday, at 98c.

Casseroles and Bean Pots, brown fire-proof inserts, with nickel-plated brass frames. Regular \$1.50 to \$2.25. Monday, 98c.

Tin Wash Pan or Baby Bath, 25c.

Self-Wringing Mop and Cloth, 25c.

Cotton Clothes Line, 50 ft., 25c.

Indoor Clothes Line, 30 ft. of cotton line on reel, 25c.

Galvanized Iron Ash Sifters, 25c.

Zinc-Faced Wash Board at 25c.

Butcher Knives, Bread Knives, 25c.

Bread Toasters, for gas stoves, pyramid style, four slices at one time, 25c.

Corn Brooms, well made, good grade broom corn. Monday, 25c.

Handled Shoe Brushes, 25c.

Enamel Lipped Saucepans, blue and white, 1 1/2 or 2-qt. size, 25c.

Wear-Ever Aluminum Lipped Saucepan, 1-qt. size, 25c.

Metal Polish, 1-pt. size. Regular 45c. Monday, 25c.

White Enamel Sink Strainers, 25c.

Wonder Shine Silver Polish, 25c.

Japanned Coal Scuttles, 25c.

**These at 39c**  
Towel Bars, 1/2 x 15 or 18 inches, nickel-plated, 39c.  
Bath Seats, oak finish, adjustable steel ends, 39c.  
Gray Enamel Daisy Kettles, 2-qt. size, 39c.  
Ironing Boards, size 12 x 60 inches long, 39c.  
Bake Board, with side, size 18 x 24 inches, 39c.

## THE SIMPSON COMPANY LIMITED