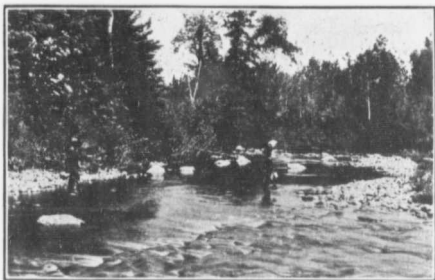


Below Fredericton the river broadens out considerable, but canoeing can be continued all the way to St. John, or side trips can be taken into the many tributaries. The Oromocto, eleven miles below Fredericton, which may be ascended for a long distance, is a particularly beautiful river. Then there is Grand Lake, a magnificent sheet of water thirty miles long; Washademoak Lake, another beautiful arm of the St. John; the Belleisle, the Nerepis, a lovely stream for canoeing, and the Kennebecasis. Large steamers ply on all these, except the Nerepis. The Kennebecasis may be ascended for a long distance above Hampton, the head of navigation, in a canoe. It is a particularly beautiful stream. The canoeist on the St. John, or in fact anywhere in



Trout Pool on the Miramichi.

New Brunswick, will find that no objection is made to pitching a tent and putting up for a day or night or as long as the tourist desires.

The Miramichi Country.

A portage of fifteen miles from Kent station on the C. P. R. will take the canoeist to a point on the Southwest Miramichi, whence he can start on one of the most delightful trips in the whole province. Following down the stream, through a forest wilderness, the journey may be ended at Boiestown or Chatham, points on the Intercolonial Railway, or con-