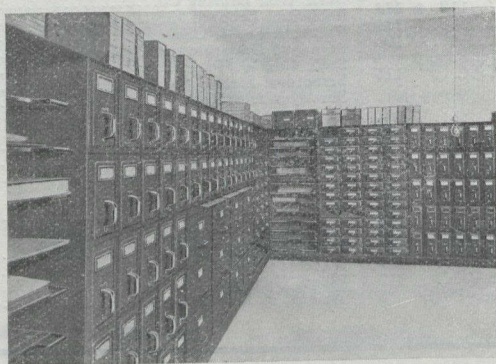


Structural Steel Co., LIMITED MONTREAL

General Offices : New Birks' Building.

5000 Tons Structural Shapes
in Stock for prompt delivery



Steel Filing Equipment

is essential for the safeguarding of valuable municipal records.

We specialize in the making of Steel Filing Cases and Vault Equipment for Municipal Buildings, Registry Offices, Banks, and all public buildings.

Let us plan your filing and record room arrangement. Our experience of more than 25 years is at your service.

Head Office : 97 Wellington St. West, TORONTO

Complete Filing Equipment Stores,—Montreal, Halifax, Ottawa, Winnipeg, Calgary, Edmonton, Vancouver.

Factories: NEWMARKET, Ont.



WHEN YOU
CONSIDER
THE ROLLER
QUESTION
REMEMBER THIS —

THE WATEROUS
STEAM ROLLER
carries a double
cylinder,
double crank
engine.

THE WATER-
OUS STEAM

ROLLER is fitted with a locomotive type boiler
tested to 165 lbs.

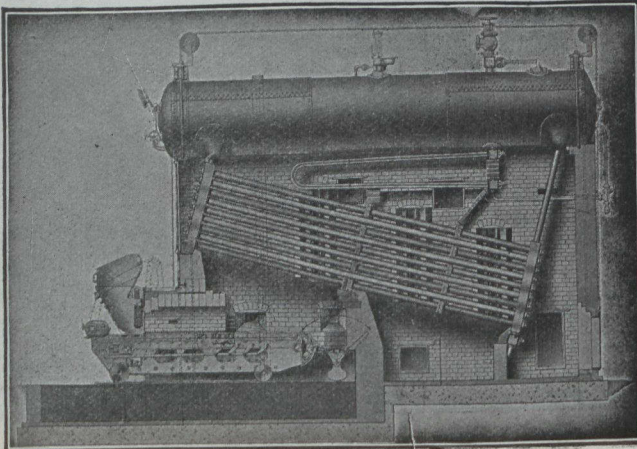
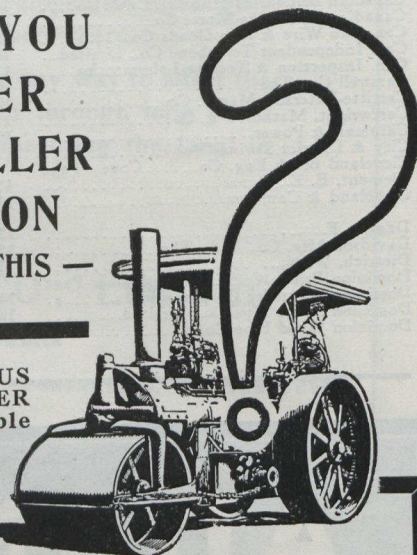
THE WATEROUS ROLLER has two speeds,
forward and reverse, with all gears cut from the
solid steel.

THE WATEROUS ROLLER is fitted with locomotive
link valve motion, wearproof rolls, shaking
grates, dumping ash pan, and is operated entirely
from the engineer's platform.

Over 150 Waterous Rollers will be used in Canada
this year.

The Waterous Engine Works Co., Ltd.

Brantford, - Canada



Babcock & Wilcox, Ltd.

PATENT

WATER-TUBE BOILERS

Highest Economy, Absolutely Safe up to the
Highest Pressures.

OVER 8,000,000 H. P. IN USE

Our book "Steam" sent on request.

Head Office for Canada

ST. HENRY, MONTREAL

Branch Office : TRADERS' BANK BUILDING, TORONTO

Babcock & Wilcox Patent Water Tube Boiler Superheater and
Mechanical Stoker