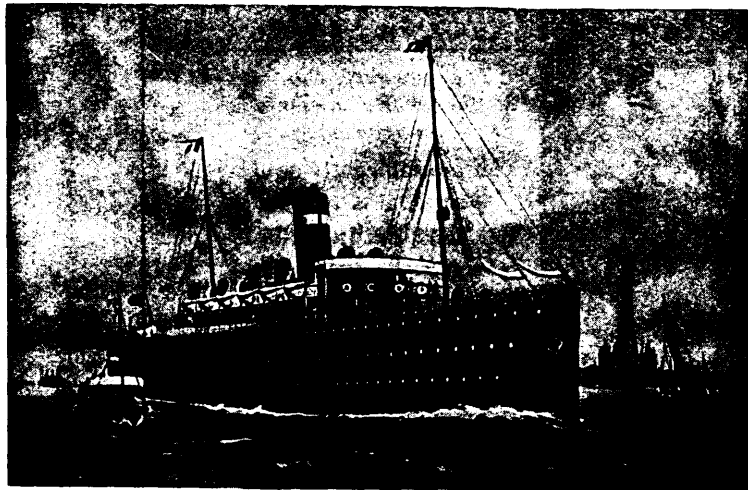


ALLAN LINE

Montreal to Liverpool.



The St. Lawrence Route.

Three Days Smooth Sailing.

Shortest Ocean Passage.

BAVARIAN, - 10,000 Tons
Twin Screws

CORINTHIAN, - 8,000 Tons

PARISIAN, - 5,500 Tons

TUNISIAN, - 10,000 Tons
Twin Screws

SICILIAN, - 7,500 Tons

CALIFORNIAN, 5,000 Tons

These fine Steamers, or others of the fleet, sail **every Thursday** from Liverpool and from Montreal, calling at Quebec and Londonderry.

The Steamers are amongst the largest and finest in the Transatlantic Lines, and are excelled by none in the accommodation for all classes of passengers. The Saloons and Staterooms are amidships where least motion is felt, and bilge keels have been fitted to all the Steamers which has reduced the rolling motion to the minimum.

Electric Lights are in use throughout the ships, and the cabins have all the comforts of modern first-class hotels.

The hour of sailing is arranged to make connection with trains arriving from the West and South.

Rates of Passage is about 25 per cent. lower than via New York.

For further particulars apply to any Agent of the Company.

H. BOURLIER, 77 Yonge Street, TORONTO
or H. & A. ALLAN, MONTREAL