

MAD RIVER, IN THE WHITE MOUNTAINS.

(Longfellow's last Poem.)

TRAVELLER.

Why dost thou wildly rush and roar, Mad River, O Mad River!

What secret trouble stirs thy breast? Why all this fret and flurry?

THE RIVER.

What wouldst thou in these mountains seek, O stranger from the city?

TRAVELLER.

Yes; I would learn of thee thy song, With all its flowing numbers,

THE RIVER.

A brooklet nameless and unknown Was I at first, resembling A little child, that all alone

Later, by wayward fancies led, For the wide world I panted;

I tossed my arms, I sang aloud, My voice exultant blending

I heard the distant ocean call, Imploring and entreating;

Men call me Mad, and well they may, When, full of rage and trouble,

Now go and write thy little rhyme, As of thine own creating,

—Atlantic.

OUR CHESS COLUMN.

All communications intended for this Column should be addressed to the Chess Editor, CANADIAN ILLUSTRATED NEWS, Montreal.

Annexed is the list of the competitors in the Cincinnati Commercial Chess Correspondence Tourney. As will be seen, it is a long one, containing no less than twenty names.

CINCINNATI COMMERCIAL CHESS CORRESPONDENCE TOURNEY.

LIST OF THE ENTRANTS.

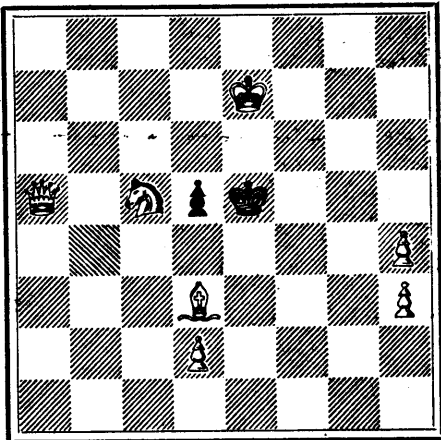
- Fred. M. Aldorf, Lansing, Mich. H. J. Anderson, Allentown, Pa. A. B. Black, Galveston, Texas. C. A. Bolvin, St. Hyacinthe, Canada. W. Braithwaite, Unionville, Canada. J. D. Cotton, Marietta, Ohio.

The first Correspondence Tourney of the Cincinnati Commercial has begun, and bids fair to be one of the most interesting contests of the kind ever undertaken.

PROBLEM No. 378.

By J. Paul Taylor.

BLACK.



WHITE.

White to play and mate in two moves.

Solution of Problem No. 378.

- White. 1. R to K Kt 4 2. K to R 2 3. Mates Black. 1. B takes P (ch) 2. P to Kt 3

GAME 505TH.

(From the Chessplayer's Chronicle.)

The following game was played on the 17th ult., in the fifth round of the pending Vienna Tournament.

(French Defence.)

- White.—(Herr Weiss) 1. P to K 4 2. P to Q 4 3. Kt to Q B 3 4. P takes P 5. Kt to B 3 6. B to Q 3 7. Castle. 8. P to K R 3 9. P to K Kt 4 10. P to Kt 5 (a) 11. Kt takes P 12. Kt to B 3 (b) 13. Kt to K 2 (c) 14. K to Kt 2 15. Kt to Kt 3 16. B takes Kt 17. P to K R 4 18. P to B 3 19. R to R sq 20. P takes B 21. B takes B 22. K to B 2 23. R to K sq 24. R to Q B sq 25. P takes P 26. P to R 5 (e) 27. P to B 4 28. R takes R 29. K to Kt 2 30. K to R 3 31. R to B 3 32. Kt to R 2 33. Q to Kt 4 ch (h) 34. K to R 4 Black.—(Herr Schwarz) 1. P to K 3 2. P to Q 4 3. Kt to K B 3 4. P takes P 5. H to Q 3 6. Castle. 7. B to K Kt 8 8. B to R 4 9. B to Kt 3 10. Kt to R 4 11. P to Q B 3 12. Kt to Q 2 13. R to K sq 14. Kt to B 5 ch 15. Kt to B 5 ch 16. K B takes B 17. Q to Q 2 18. Q to Kt 5 19. B takes Kt 20. K to K 5 21. Kt takes B 22. Q R to K sq 23. Q to K 5 24. P to B 3 25. P takes P 26. Kt to R sq (f) 27. Kt to B 2 28. Q takes R ch 29. Q to K 7 ch 30. Q to K 5 (g) 31. Kt to R 3 32. Kt to B 2 33. Kt to Kt 4 ch 34. Q to Kt 7 (i) White resigns.

NOTES.

(From the Field.)

- (a) As far as we can remember, this is new, and it is really strange that this simple combination of the last two moves, which wins a P, should not have been adopted before. (b) Best. He could not afford to let the adverse Kt in at B 5, otherwise his best square would have been clearly K 3. (c) An error of judgment, from which the opponent, by clever tactics, does not allow him to recover. (d) Herr Schwarz has now a strong counter-attack, which he conducts most skillfully. (e) This only relieves him temporarily. (f) An excellent rejoinder. (g) Stronger than capturing the Kt P, in which case White would have obtained a fair game by R to Kt sq and B takes Kt P. (h) He drops into the trap. (i) Finely played.

MISCELLANY.

BARON MARTIN was once trying a prisoner for murder. In summing up he charged directly for hanging, but the jury would not have it, and brought in a verdict of manslaughter.

A woman named Paula was recommended by the Superior of the Convent at St. Omer to write to the Virgin, begging her intervention to cure her of an internal complaint.

ANOTHER presentation of the jeweller's art to Mr. Gladstone. The Premier's friends should tell him that presentations of silver and gold

from demonstrative workmen are bad omens. There is always a story in the background, and it's safe to leak out.

A PUBLIC man in Canada, just before he went to pieces, had a presentation of silver soup ladles and pickle forks by the workmen of the town, but the unpatriotic and irrepressible jeweller made a row about his bill, which scattered the story to the four winds, and the public man, who was demonstrated by the silver pickle forks, had to pay the bill or be seized by the bailiff, and he will probably never have any more demonstrations in silver soup ladles, unless he pays for them in advance.



TELEGRAPH LINES.

SELKIRK TO EDMONTON.

NOTICE.

SEALED TENDERS will be received by the undersigned up to Noon on WEDNESDAY, the 17th day of MAY next, for the purchase of the Government Telegraph Line (embracing the Poles, Wires, Insulators and Instruments), between Selkirk and Edmonton.

The conditions to be that a line of telegraph communication is to be kept up between Winnipeg, Humboldt, Battleford and Edmonton, and that Government messages be transmitted free of charge.

The parties tendering must name, in addition to the lump sum they are prepared to give, for the telegraph line, the maximum rate of charge for the transmission of messages to the public.

F. BRAUN, Secretary.

Dept. of Railways and Canals, Ottawa, 18th April, 1882.



OTTAWA RIVER.

Grenville and St. Anne Canals.

Notice to Contractors.

SEALED TENDERS addressed to the undersigned and endorsed "Tender for Timber for Lock Gates," will be received at this office until the arrival of the Eastern and Western mails, on THURSDAY, the 11th day of MAY next, for the furnishing and delivering, on or before the 3rd day of October, 1882, of Oak and Pine Timber, sawn to the dimensions required for the construction of Lock Gates for the new Locks at Greece's Point, Grenville Canal, and the new Lock at St. Anne, Ottawa River.

The timber must be of the qualities described, and of the dimensions stated on a printed bill which will be supplied on application, personally or by letter, at this office where forms of Tender can also be obtained.

No payment will be made on the timber until it has been delivered at the place required on the respective canals, nor until it has been examined and approved by an officer detailed to that service.

Contractors are requested to bear in mind that an accepted bank cheque for the sum of \$300 must accompany each tender, which shall be forfeited if the party tendering declines to enter into a contract for supplying the timber at the rates and on the terms stated in the offer submitted.

The cheque thus sent in will be returned to the respective parties whose tenders are not accepted. This Department does not, however, bind itself to accept the lowest or any tender.

By order, F. BRAUN, Secretary.

Dept. of Railways and Canals, Ottawa, 15th April, 1882.

THE COOK'S FRIEND

BAKING POWDER

Has become a HOUSEHOLD WORD in the land, and is a HOUSEHOLD NECESSITY

in every family where Economy and Health are studied. It is used for raising all kinds of Bread, Rolls, Pancakes, Griddle Cakes, &c., &c., and a small quantity used in Pie Crust, Puddings, or other Pastry, will save half the usual shortening, and make the food more digestible.



SAVES TIME. IT SAVES TEMPER. IT SAVES MONEY.

For sale by storekeepers throughout the Dominion and wholesale by the manufacturer.

W. D. McLAREN, UNION MILLS,

10-17-82

Cadbury's COCOA ESSENCE.

PURE, SOLUBLE, REFRESHING.

It is often asked, "Why does my doctor recommend Cadbury's Cocoa Essence?" The reason is that being absolutely genuine, and concentrated by the removal of the superfluous fat, it contains FOUR TIMES THE AMOUNT OF NITROGENOUS or FLESH-FORMING CONSTITUENTS of the average of other Cocos which are mixed with sugar and starch. Beware of imitations, which are often pushed by shopkeepers for the extra profit.

Montreal Post-Office Time-Table.

APRIL, 1882.

Table with columns for DELIVERY (A.M., P.M.), MAILS (ONT. & WESTERN PROVINCES, QUE. & EASTERN PROVINCES, LOCAL MAILS, UNITED STATES, GREAT BRITAIN, &c.), and CLOSING (A.M., P.M.).

(A) Postal Car Bags open till 8.45 a.m., and 9.15 p.m. (B) Do 9.00 p.m.

BANK OF MONTREAL.

NOTICE is hereby given that a Dividend of FIVE PER CENT upon the paid up capital stock of this Institution, has been declared for the current half year, and that the same will be payable at its Banking House in this city, and at its branches on and after,

Thursday 1st day of June next,

The Transfer Books will be closed from the 17th to the 31st of May next, both days inclusive.

The Annual General Meeting of the Shareholders, will be held at the Bank on Monday the 5th day of June next. The chair to be taken at one o'clock.

By order of the Board.

A. MACNIDER,

Assistant General Manager.

Montreal, 25th April, 1882.