

TELEPHONE 344

P.O. BOX 693

STUART & HARPER

758, 760, 762 MAIN STREET, WINNIPEG

Dealers in Machinery and Supplies

Boilers, Engines and Steam Pumps, Hoisting Engines and Centrifugal Pumps. Agents for Monarch Economic Boilers. Latest improved Flour Mill Machinery, Woodworking Machinery and Saw Mills, Ironworking Machinery and Tools, Dodge Wood Split Pulleys and Friction Clutches, Dodge system of Manilla Rope Drives, Electric Dynamos and Motors, Electrical Supplies and Incandescent Lamps, Electrical Repairs.

Large Stock of Second-hand Machinery on Hand

Call and see us or write for prices on any Machinery you are in need of.

G. F. & J. GAIT**Wholesale Grocers**

PACKERS OF

"BLUE RIBBON" and "UNION JACK" Packet Teas.

The Rat Portage Lumber Company, Limited

**SASH, DOORS
MOULDINGS, ETC.**

OFFICE AND WAREHOUSE:

POINT DOUGLAS AVENUE

WINNIPEG, MAN.

CORRESPONDENCE SOLICITED

J. C. GRAHAM, MANAGER WINNIPEG BRANCH

ACETYLENE GAS

CARBIDE OF CALCIUM

100 lb. tins, \$4.50

Write for Prices
Large Quantities

NAPHEY ACETYLENE GAS BURNERS IN STOCK.

The only Burner adapted to use with this gas.

R. A. WYLLIE, Western Agt., Western Canada Block., Winnipeg, Man.

HOTEL LELAND

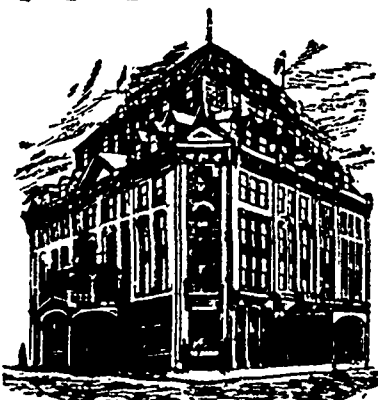
THE PALACE FAMILY AND
COMMERCIAL HOTEL

Rates, \$2.00 to \$4.00 a Day

Second to nothing in Canada.

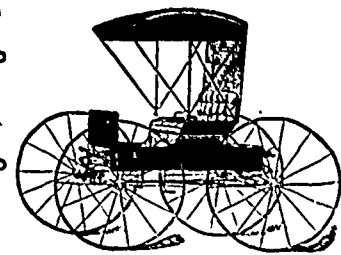
W. D. DOUGLAS, Manager.

City Hall Square, Winnipeg.

**A. C. McRAE**

—DEALER IN—

Carriages, Wagons



Harness, Robes

Manufacturer of Carriage Tops and Trimmings. The trade supplied in any quantities. It will save you money to consult us before placing your spring orders.

OFFICE AND WAREHOUSE

Cor. King and James Streets, WINNIPEG

Sort up
Your Stock

OF SMALLWARES

There are many lines
you could handle with
profit.



We carry a nice range in con-
nection with our furnishings.

JUBILEE RETAINERS

For any Style of Tie
THE BEST YET

SELF FASTENING
TROUSERS BUTTONS

CUFF HOLDERS

GARTERS

ARMLETS

Attractive Designs in Sleeve
Buttons, Links, Studs, etc.

**Myron McBride & Co.**

WHOLESALE
MEN'S FURNISHINGS

WINNIPEG - MANITOBA