

In the re-sawing mill is a double edger, re-sawing band mill, butting saws, small splitting saw, etc.

The system of transfer rolls for transferring lumber from the gangs to the butters effects the saving of several men, and the mill is considered one of the most modern in the Ottawa district. Its capacity is 265,000 feet per day. A large power pump has lately been put in, to gether with 1,400 feet of 2½ inch standard hose for fire protection.

The other mill is 95x120 feet in size, with wing 50x40 feet. Power is furnished by three Rose and two Lamb water wheels, with four central discharge wheels for running edgers and butting saws. Three gang saws, one Yankee gang, two edgers and two butting saws, with tables, comprise the principal machinery. The capacity is 200,000 feet in ten hours.

The mills are lighted by 40 arc lights, furnished by three Weston dynamos, one of 20 and two of 10 lights. The sawdust is destroyed by burners.

#### BRONSONS & WESTON LUMBER COMPANY.

By an act of the parliament of Canada was incorporated the Bronsons & Weston Lumber Company, Limited, of which the Hon. E. H. Bronson is president and general manager, and Mr. L. Crannell secretary-treasurer. They operate two saw mills and a shingle mill, all water power, with a capacity of 300,000 ft. in ten hours, and own large limits located some distance up the Ottawa. The larger mill contains one band saw and six sets of gang saws, while in the smaller mill are three gang saws, in addition to the ordinary trimmers, butters, edgers, etc. The average output is about 75,000,000 feet per year, principally for the United States market. In this respect they differ from many of the other mills, which manufacture deals for the British market. This firm employs over four hundred men at the mills, exclusive of those engaged for the woods each winter. Their mill and yards are lighted by twenty-five arc lights.

#### GILMOUR & HUGHSON.

Of the firm of Gilmour & Hughson, Mr. John Gilmour is president and Mr. W. Hughson vice-president. The firm own large limits on the Gatineau river and three large saw mills, the largest being situated at Hull, on the Ottawa river, and the two smaller ones at Chelsea, about eight miles up the river. The mill at Hull has a capacity of 250,000 feet per day, and is 180x80 feet, with additional sorting tables on each side. Steam power is used, there being two Goldie & McCulloch engines of 500 h. p. each, and ten boilers with a total capacity of 1,500 h. p. The mill comprises two band saws, with steam feed, a gang saw, pair of twins for slabbing small logs, steam crane for lifting logs for gang, steam rollers, steam flippers, two slash tables, five saws in each, for butting slabs, two sets of trimmers, and two double edgers. Down stairs are located the lath, picket and shingle mills of large capacity. Throughout the mill are live rollers for conveying the stock.

The chimney is of brick, 13 feet base and 8 feet top, with flue 5 feet square inside. Its height is 160 feet, with smoke-stack 103 feet high and 54 inches diameter.

As the lumber comes from the mill it is placed on rollers and then loaded on cars in a unique manner by means of a swing table. Forty cars are required for hauling lumber from the mill to the yards, which comprise about sixty acres.

From their limits the logs are brought down the Gatineau river to the mill and drawn up on a logway by an endless chain. As the logs enter the mill they are counted by an automatic device, the invention of Mr. John Craigie, mechanical superintendent. Sawdust is used for fuel, being conveyed to the boilers by carriers. The mill is lighted by an electric light plant, the dynamo having a capacity of 150 lights of 16 c. p. each, driven by a 30 h. p. engine.

At Chelsea the two mills have a combined capacity of about one-third greater than the mill at Hull. They are driven by water power. The firm have a large lumber yard at Ironsides, the lumber from the Chelsea mills being conveyed to the yard by means of a water flume or spout 3½ miles long, 2 feet wide and 20 inches deep. They manufacture largely for the American market, their deals going to Great Britain, being shipped in barges to Montreal and loaded on steamships. The ends of deals are sold for making matches.

#### R. H. KLOCK & COMPANY.

Messrs. James B. and Robert A. Klock comprise the firm of R. H. Klock & Co., whose head offices are at Klock's Mills, Ont. Besides manufacturing sawn lumber they have for many years been engaged in the square timber business, and purpose taking out a small raft during the approaching winter. Their mills are located at the following points: One steam saw mill, with lath and shingle mills and planer, at Bonfield, Ont.; one steam

quired for floating them to the mills. The business to-day is carried on by Messrs. H. F. McLachlin and Claude McLachlin, surviving sons of the late Daniel McLachlin.

#### THE GILLIES BROS. COMPANY.

The firm of Gillies Bros., consisting of James William, John and David Gillies, sons of the late John Gillies, of Carleton Place, Ont., (himself a prominent lumberman on the Mississippi a generation ago), commenced business at Braeside in the year 1873, buying the mills at that place, and the limits on the Coulonge river belonging to the Rev. Henry Osborne. They have since been actively engaged in the manufacture of sawn lumber and square timber.

The saw mill is situated at Braeside, on the shore of Chats lake, an expansion of the Ottawa, and three miles from Arnprior. At time of purchase it had a capacity of eighty to one hundred thousand ft. per day of 11 hours, but has since been enlarged and remodelled until now the capacity is 200,000 ft. in the same time. The machinery consists of twin circulars, a 50-in. double cant gang and two band saws, with necessary steam feeds and canters, edgers, trimmers, re-saws, lath and picket machinery, etc. These are driven by a cross compound condensing engine, with cylinder of 26 and 40 in. diameter and 40 in. stroke, with a battery of eleven boilers. There is also a 25 horse power engine driving resawing machinery, and an independent engine and dynamo for electric lighting. The piling ground has a capacity of 35,000,000 to 40,000,000 ft., the lumber being piled directly from car tracks, of which there are some five miles owned by the company, and connected to main line of the C. P. R. The Ottawa, Arnprior and Parry Sound Ry. also runs within two miles of the yard, with which connection will probably be made.

During the early years of the firm, square timber for the British market was extensively manufactured in addition to sawn lumber, but of late years nothing has been done in this way. During the coming winter, however, they expect to take out considerable waney square pine of large size and fine quality.

The mill has sawn almost exclusively for United States markets, but during the season just closing they have sawn largely for British markets. The seasons cut will be about 30,000,000 ft.

The firm employ some 250 men at the mills, and 500 to 600 in the woods, and have over 1,200 miles of timber limits under license, all of which is on waters tributary to the mill. In 1894 the firm was changed to a joint stock company, known as the Gillies Bros. Co., Ltd., with the four members of the original firm and four sons as the shareholders and directors, thus making three consecutive generations who have been engaged in the business.

#### WM. MASON AND SONS.

The present members of the above firm are Messrs. George Mason and Wm. Thos. Mason. The business was originally started by Messrs. Robert and George Mason in 1861, who ran a small dimension mill at the Chaudiere. About the year 1868 they sold the business to their father, Mr. Wm. Mason, who purchased the present site, on which he erected a small mill and conducted the business, with Mr. Robert Mason, his eldest son, as manager, until 1886, when his three sons, Robert, George and Philip N., were taken into partnership.

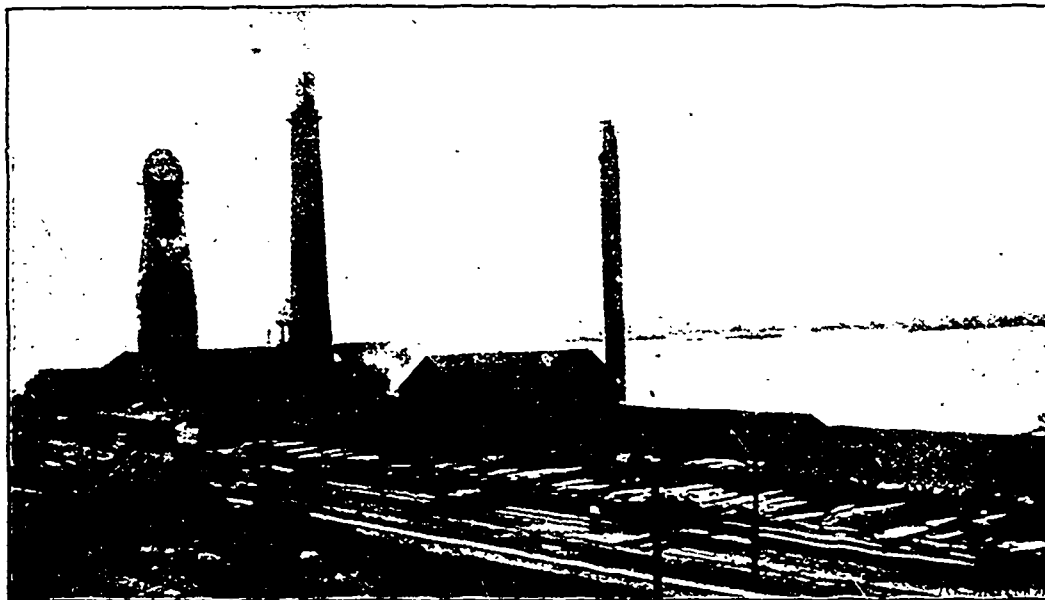
Mr. Wm. Mason died in April, 1888, and the business was carried on by the sons until November, 1889, when Robert and Philip sold their interest to George and Wm. T. Mason, who have since carried on the business. Under the present management the business has, notwithstanding the extreme dullness which has affected the lumber trade in general, been more than doubled since 1889. They manufacture dimension timber, lumber, lath and shingles.

The mill now has a capacity of from 75,000 to 100,000 feet B. M. per day, together with a daily output of 30 to 35 thousand of lath and 25 to 30 thousand of shingles.

Last year the output of the mill was about 12,000,000 ft. of lumber and timber, 6,250,000 lath and 5,500,000 pine and cedar shingles. The present season's cut will be about the same. The firm employ about 125 men and from 30 to 40 horses at the mill, and during the winter from 200 to 250 men and sixty teams of horses are employed in logging operations.

They obtain their supply of timber from their own limits, which are situated on the Madawaska and Mattawa rivers in Ontario, and the Coulonge and Dumoine rivers in Quebec, and are in extent about 450 square miles.

The mill, of which the owners are justly proud, is one of the best equipped and most convenient in the province. The driving plant consists of four 100 horse power boilers and a 300 horse power Wheelock engine, which are contained in separate stone buildings with fire-proof doors and roof. The mill proper is a two and a half storey frame building, 73 feet wide by 140 feet long, with annex



THE GILLIES BROS. SAW MILL, BRAESIDE.

mill, with lath and shingle mills attached, and one water power mill with planer, at Klock's Mills, Ont.; one steam mill with lath and shingle mills attached at Moore Lake, Ont.; one large band and circular mill, with lath and shingle mills, at Aylmer, Que.

#### McLACHLIN BROS.

The mills of the above firm are situated at Arnprior, at the confluence of the Madawaska and Ottawa rivers. Here a little more than forty years ago the late Daniel McLachlin purchased the water power and 400 acres of land in the township of McNab, within the limits of which the municipality now stands. Among the first buildings to be erected by Mr. McLachlin was a water power saw mill. This was in the year 1862. A little later another mill was built, and both these mills have been running every season since without intermission. A third mill, operated by steam, was built in 1871 on the shore of Chats lake, but was destroyed by fire four years later. It has since been replaced by another, built by the present firm, while in the year 1892 a fourth mill was constructed.

The two last-named mills are equipped with every possible appliance which science has invented for the manufacture of lumber, and the quality of the manufactured product speaks well for the enterprise of the proprietors.

During the sawing season 700 men are employed, and from 900 to 1,000 are engaged in logging operations in the woods. The annual output has reached as high as 80,000,000 feet, although last season only 55,000,000 feet were manufactured. The piling ground is said to be among the largest in the world, there being ten miles of track.

The firm of McLachlin Bros. are owners of very extensive limits on the Madawaska, Bonnechere, Petawawa, Amable du Fond and Coulonge rivers, and a few years ago purchased 500 miles of virgin timber land on the Upper Ottawa. Their logs are taken a distance of about four hundred miles, and two seasons are sometimes re-