

Fig. 1.

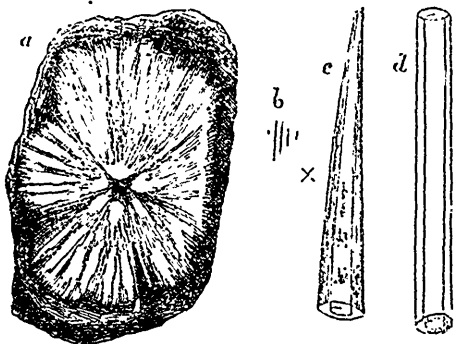


Fig. 4.

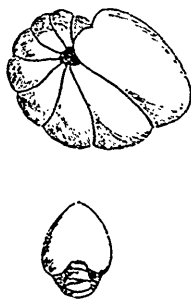


Fig. 2.

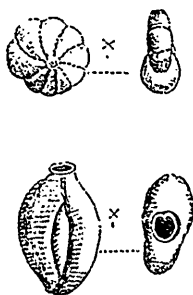


Fig. 3.



Fig. 5.

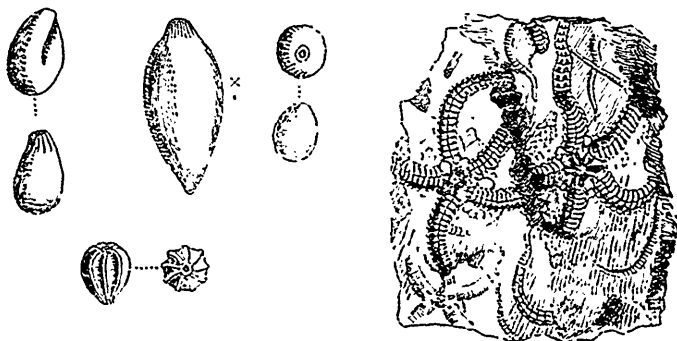


Fig. 1. *Tethya Loganii*, Montreal, (a) Mass of Spicules in clay; (b c d) Spicules, (natural size and magnified.)

Fig. 2. Group of Common Foraminifera from Montreal. (magnified.) *Polystomella crispa*; *Quinqueloculina seminulum*; *Polymorphina lactea*, two varieties; *Entosolenia globosa* and *E. costata*.

Fig. 3. *Truncatulina lobulata*. (magnified.)

Fig. 4. *Nonionina scapha*.—Var. *Labradorica*. (magnified.)

Fig. 5. *Ophioglypha Sarsii*, Duck Cove, St. John, N. B.