

# The Primary Position Held by the Royal Stores as

## STYLE LEADERS

has been considerably strengthened by our Display of New Fall Fashions.

"The finest display in town of beautiful Merchandise." This is the unanimous verdict of all who have been to the Royal Stores this week. They also say that our prices are very moderate. They find that their most acute shopping problem—the necessity for getting the "utmost out of every dollar spent"—is most readily solved at the Royal Stores.

**STERLING VALUES FOR FRIDAY and SATURDAY.**



### Smart & Useful FALL COATS

For women of all sizes. These Coats are made of Heavy English Blanket Cloths in shades of Brown, Grey, Saxe and Navy. Perfectly cut and tailored with large collars that button high at neck if required; semi-cape sleeves; easy slip-on shapes; button trimmed. Reg. values \$32.00 and \$32.50. Sale Price,

**\$25.80**

### A Sale of Dress Goods

50 in. TRICOTINE—The ideal costume material, in colors of Navy, Black, Belgian Blue, Brown and Taupe. Reg. \$7.50 yd. for **\$6.90**  
56 in. COSTUME SERGES—In Black and Navy only; durable quality; cloth finish and soap shrunk. Reg. \$9.00 yd. for **\$8.25**  
54 in. ALL WOOL KAPS—In Brown and Navy; heavy weight, reliable dyes. Regular \$16.20 yd. for **\$13.75**  
36 in. JAP SILK—Soft lustrous quality, in shades of Saxe, Navy, Fawn, Brown & White. Regular \$2.60 yd. for **\$2.25**  
36 in. SHANTUNG SILKS—In shades of Navy, Brown, Grey, Black and White. Reg. \$2.50 yd. for **\$2.10**

### Ladies' Tan Kid Gloves.

4 dozen pairs, 1 dome fastener; a well finished unlined glove; sizes 7 to 9½. Reg. \$5.00 pair for **\$4.35**



### What are the New Shapes in Hats

The Millinery at the Royal Stores truly interprets the modes of the moment. While in our Showroom, you should make sure of seeing the charming display of Artificial Flower and Feather Trimmings which are in high favor for Fall wear.

### Ready-to-Wear Turbans.

Close fitting Felt Turbans in new attractive shapes, trimmed in a variety of styles with plain velvets and ribbons, some finished with tassels. Reg. \$4.80 each **\$4.20**

### Felt Crusher Hats.

In a variety of new shapes; colors of Taupe, Fawn and Dark Green. Reg. \$2.75 each for **\$2.35**

### Dressing Gowns & Jackets

DRESSING GOWNS—24 only handsome Felted Dressing Gowns in Grey, Pink, Saxe or Helle gowns with floral designs; kimono style, loose waists. Reg. \$3.40 each for **\$2.85**  
SILK HAIR NETS—6 doz. Hair Nets of fine quality, each fitted with elastic; colors of Dark Brown, Mid Brown and Black. Special, each **10c.**

DRESSING JACKETS—In heavy Fancy Felted; round collars, ¾ sleeve and girle. Regular \$1.60 each **\$1.30**

NEW NECKWEAR—Latest designs in Silk, Muslin, Lace and Crepe Collars; assorted colors. Reg. 65c. each **55c.**

### Underwear

LADIES' VESTS—Cream Jersey ribbed, medium weight; sizes 36 and 38; V neck and short sleeves. Reg. \$1.25 each for **\$1.05**

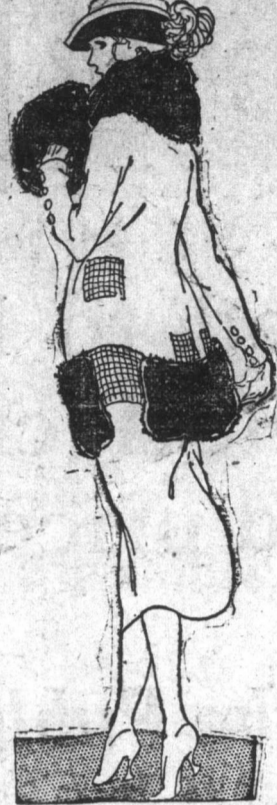
CORSET COVERS—White Jersey knit, large and medium sizes, finished with Torchon lace; long sleeves. Reg. \$2.00 each for **\$1.70**

FLEETE KNICKERS—Close and open styles, loose leg; all white, finished with frill and scalloped edge. Reg. \$1.50 pair for **\$1.50**

LADIES' VESTS—Cotton and Wool mixtures; sizes 38 and 40, in round neck, open front and half sleeves. Reg. \$2.75 each for **\$2.25**

CHILD'S BLOOMERS—Grey Fleece Cotton; sizes to fit 2 to 7 years; fitted band at waist, elastic at knee. Regular \$1.40 pair for **\$1.15**

CHILD'S UNDIES—Fleece lined, to fit a child of 1 to 2 years; vest with long sleeves, pants ankle length. Reg. 66c. each for **58c.** Reg. 75c. each for **65c.** Reg. 80c. each for **72c.**



### Rose Foxeline FUR STOLE

Of extra special quality, finished with Grey Silk lining; square cape styles. Reg. \$11.75 each **\$9.60**

### Black Wolf Stoles.

12 only handsome Wolf Stoles, 27 inches long; silk lined; suitable for coat collars. Reg. \$6.75 each for **\$5.78**

### Now is the Time to Buy Footwear for Fall

MEN'S BOOTS—30 pairs Black Gun Metal Boots, Balmoral shapes, with rubber soles and heels; sizes 6 to 9½. Reg. \$11.90 pr. for **\$10.75**

MEN'S BOOTS—20 pairs Black Vici Kid Boots, Blucher style, fitted with rubber heels; all sizes. Reg. \$10.80 pair for **\$9.75**

MEN'S BOOTS—30 pairs Tan or Mahogany Calf Boots, Blucher cut, with good thick soles; sizes 6 to 9. Reg. \$17.25 pair for **\$15.50**

MEN'S BOOTS—30 pairs Tan or Mahogany Bluchers with rubber heels; a good Fall Boot; sizes 6 to 9. Reg. \$12.55 pair for **\$11.30**

MISSIE'S RUBBERS—Plain styles, White & Tan; sizes 11 to 12; wide toe. Reg. \$1.30 pair for **\$1.15**

MISSIE'S MOCASENS—In Blue Felt with ornamental tops; padded soles; sizes 11 to 2. Reg. \$2.35 pair for **\$2.20**

CHILD'S BOOTS—Grey Kid Buttoned Boots, sizes 3 to 6; Grey Cloth tops, flat heel, comfort toe. Reg. \$2.00 pair for **\$1.80**

### SALE OF SMALLWARES

MENDING WOOL—Special 2 cards for **9c.**

TAN BOOT LACES—Special per pair **14c.**

BLACK BOOT LACES—Special per pair **12c.**

BASTING COTTON—Black or White, 2 reels for **9c.**

ALADDIN SOAP DYES—Reg. 15c. pkt. for **13c.**

HUMP HAIR PINS—Reg. 8c. pkt. for **6c.**

DOVE FASTENERS—Black or White. Special per card **6c.**

INDIA TAPE—Black or White. Reg. 10c. piece for **8c.**

DUTCH LINEN TAPE—White. Reg. 18c. piece for **15c.**

MOTH BALLS—Reg. 15c. pkg. for **13c.**

DRESSING COMBS—50c. each for **42c.**

TOOTH BRUSHES—45c. each for **40c.**

### Splendid New Styles in All-Wool Spencers & Blouses

SPENCER COATS—Useful all wool garments to wear under costume coat; in shades of Saxe, Navy, Black and White; sleeveless; assorted sizes. Regular \$3.75 **\$3.30**

JAP SILK BLOUSES—All White; sizes 36 to 44; square and sailor collars; finished with embroidery and hemstitching. Reg. \$4.00 ea. for **\$4.40**

GEORGETTE BLOUSES—The new Casaque designs, round neck, short sleeves; in shades of White, Fawn, Saxe and Taupe; sizes 36 to 42; elastic at waist, buttoned at hip. Regular \$13.20 each **\$11.65**

CEPEA SERGE SHIRTWAISTS—A new washing material; Cream ground with wide fancy stripes, roll collars; sizes 36 to 42. Reg. \$6.75 each for **\$5.60**

WOMEN'S RAIN COATS—Made of best rubberized cloth; Navy Blue with Fawn collar and cuffs; newest Dolman style or Maygar; easy slip-on; sizes 46 to 50 in. Reg. \$27.50 each for **\$27.25**

PLAID SKIRTS—New models in Fancy Plaids, assorted colors; high waist effects with attached belt and fancy pockets; all sizes. Reg. \$12.25 each for **\$10.55**

### WOMEN'S STOCKINGS

Heather Hose.

All pure wool, colors of Green, Brown and Grey; 2½ and 4½ ribs; seamless feet; sizes 9 and 9½. Reg. \$1.70 pair for **\$1.48**  
Reg. \$3.00 pair for **\$2.60**

Black Cashmere Hose.

Also Black Worsted, 2½ and 4½ ribs; sizes W and SW; spliced heels and toes. Regular \$1.35 pair **\$1.16**  
Sale Price Regular \$1.10 pair **94c.**



### Linoleums, Door Mats, Towels, Fancy Linens

GREENWICH INLAIN LINOLEUM—2 yards wide, in several new designs. Brown Check. Reg. \$6.00 yd. for **\$5.25**  
Plain Brown. Reg. \$6.25 yd. for **\$5.45**  
Green Check. Reg. \$7.50 yd. for **\$6.75**  
Stone Grey and Blue. Reg. \$8.25 yd. for **\$7.15**

FELTEX FLOOR COVERING—500 yards super for quality Feltex; Brown and Green color designs; 2 yards wide. Special, per yard **\$1.85**

TEA COSEY HATS—Covered with plain saten of excellent quality; regular sizes; assorted colors. Regular \$1.50 each for **\$1.28**

LAUNDRY BAGS—In White Linen with colored embroidery; size 18 x 28; hemmed at top with tape pull. Regular \$1.45 each for **\$1.22**

VANITY BAGS—36 Silk Bags in Black and Brown, fitted with strong metal frame and patent clasp, finished with silk tassels. Reg. \$3.70 **\$4.30** each for **\$3.70**

### The Man's Store

where Men Shop with confidence.

MEN'S SATIN TIES—30 dozen of them, including the newest designs and colorings; wide end effects. Reg. \$1.16 each for **\$1.16**

MEN'S PARIS TIES—The Narrow End Ties are regaining popular favor. We offer 20 dozen new Satin finished Ties in a variety of smart designs and colors. Special Sale **38c.**

MEN'S SCARFS—All Wool Scarfs in assorted Heather mixtures; size 12 x 56 in.; fancy bared ends and fringe. Regular \$5.00 **\$4.40**

10 dozen All Wool Scarfs in Grey and Green grounds, with fancy striped ends; size 12 x 56; fringed ends. Regular \$2.30 ea. **\$2.05**

MEN'S SWEATER COATS—Warm garments fitted with storm collar and 2 pockets; full sizes; suitable for Fall wear. Reg. \$4.00 each for **\$3.45**

### Time for Warmer Socks

Men's Socks.

150 dozen pairs All Wool Fingering Half Hose, soft finish; sizes 10 to 11 inch, in 2 different weights. Reg. \$1.80 pair for **\$1.50**

Men's Socks.

All Wool Cashmere Hose in Steel Grey only; sizes 10 to 11; a nice Sock for present wear; soft finish seamless feet. Reg. \$1.25 pair for **\$1.10**

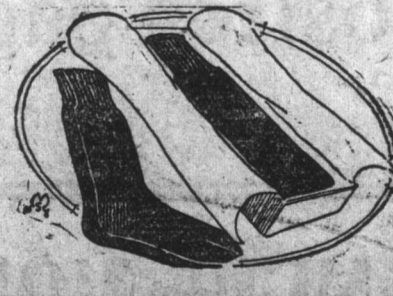
MEN'S FELT HATS—Smooth Soft Felt Hats in shades of Light Grey, Brown, Green, Black, &c.; ribbon taped brims; unlined; leather sweat bands; sizes 6½ to 7½. Reg. \$10.25 each for **\$8.50**

MEN'S VELOUR HATS—Superior quality Hats in colors of Navy, Bronze, Myrtle, Fawn and Black; wide brims; sizes 6½ to 7½; lined all silk. Reg. \$14.00 each for **\$11.80**

MEN'S CAPS—5 dozen only Scotch Tweed Caps, light and dark shades; one-piece crown style with back band; fine quilted silk lining; sizes 6½ to 7½. Regular \$5.25 each **\$4.50**

WHITE LINEN COATS—For stewards and waiters, 40 and 42 in. chest; detachable buttons. Reg. \$4.50 each for **\$4.15**

WHITE LINEN APRONS—For grocers, waiters, &c.; lengths 38 to 42 inches. Regular \$1.50 each for **\$1.38**



### Schooner Roy Bruce

Splendid Addition to Our Mercantile Marine.

It must be admitted that the vessels in our mercantile marine to-day cannot, as a rule, compare with those of half a century and less ago. In those days we had such clippers and ocean grayhounds as Baine Johnston's barque, Narwhal, brig Ann Johnston, brig Walter Baine, barque Constance, brig Othello, brig Dante and many others. Job Brothers & Co. had the barque Netherton, barque Snowden, barq. Blanche, barq. Fanny and many others. Walter Grieve had the splendid barque Carpasian, commanded by the veteran, Capt. Joseph Gosse, still hale and hearty; and other first-class ships. McBride had the brig Ticino, Runnymede, Vesta and Spray; J. & W. Stewart had amongst their fleet the brig Balclutha, barque James Stewart, and brig Glancus; P. & L. Tessler were owners of the Petunia (commanded by the veteran Capt. Charles Nichols, at present of H.M. Customs), barque Kaimla, brig Maria, etc. All these ships were built in England or on the Clyde in Scotland, and were beautiful models of marine architecture, and well upheld the reputation of the Newfoundland mercantile marine, as well as the hardihood, pluck, perseverance and agility of our sailors.

At various times of later years, vessels have been added to our fleet which for beauty of model, durability and sailing qualities can compare favorably with the fleet of any other country on this side of the Atlantic, but these vessels are of Colonial build, and, as a rule, are schooner rigged. One of them has been lately added to our local fleet—the schooner Roy Bruce, built at Shelburne, Nova Scotia, by the Shelburne Shipbuilders' Limited, launched a few weeks ago, and arrived in St. John's during the present week. The owner of this splendid vessel is the genial Capt. Robert F. Hollett, of Burin North, though young in years, a veteran in experience, as well as a keen and successful business man. The Roy Bruce is classed for 12 years in the Bureau Veritas. Capt. Hollett believes in the old adage "no man is so well served as he who serves himself," and putting this motto into practice, he visited Shelburne while his vessel was in course of construction, and it is needless to say that not the smallest detail escaped the eagle eye of the experienced master mariner.

The Roy Bruce was contracted for in February last, and is 195 tons gross and 149 tons nett. She is built from the best wood procurable, with topboards of Oregon Pine. The interior of the cabin is finished with Douglas Fir, and the vessel is all iron-strapped. The length is 120 feet, 27 in. beam, and 10 ft. 8 in. deep. She has an engine for heaving up anchors and hoisting sails, etc., also a pumping engine. The cabin is one of the most commodious and comfortable, as well as beautiful of any ship in port, with all modern appliances and necessities. The spars are of Oregon Pine, and the standing rigging and running gear are of the very best quality. She carries a large and well-built life boat and a jolly boat. The forecabin and galley are below deck, which makes it more comfortable for the crew. The Roy Bruce carries foresail, mainsail, mizzen, four jibs, two staysails and three gaff topsails. Capt. Hollett had not much chance of judging her sailing qualities on the passage down, but he is confident it will take a smart vessel to get away from her, when the opportunity offers. Anyhow, the genial captain will soon have an opportunity of judging her standing as an ocean greyhound, as she is now open to charter, and we are confident that the good ship Roy Bruce and her capable captain will hold their own against all comers. T. H. Carter & Co. are the agents.

### Supreme Court.

IN ADMIRALTY.

(Yesterday's proceedings.)

Present: the Chief Justice.

William Legge and the Steamship Linan.

This is an action for the destruction of motor boat owned by the plaintiff at Heart's Content. Morine, K.C., for plaintiff; Mr. C. E. Hunt, for defendant. Wm. Legge is called, examined and cross-examined. The further hearing is adjourned sine die.

(Before the Chief Justice.)

In the matter of the Insolvency of Angus Wentzell of Springdale. The hearing of which was adjourned from Little Bay and continued this morning before the Chief Justice. Wentzell was declared insolvent. Mr. James Ayre was appointed trustee. Mr. McNeilly appeared for Ayre & Sons; Mr. E. Leo Carter for T. and M. Winter, the petitioning creditors and for Harvey & Co.

The Young Man's Boot! Men's Dark Tan Laced Boots with rubber heels; makes an excellent Fall Boot, for \$13.50 at SMALLWOOD'S.—sep25,12

MINAR'S LINIMENT FOR BURNS, ETC.

# The ROYAL STORES Ltd.