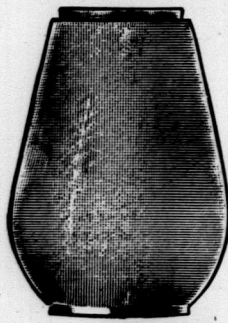


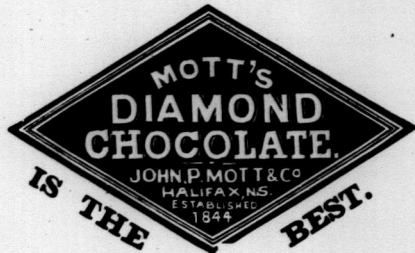
ARE YOU USING OUR



Cold Blast
or Jubilee
Globes

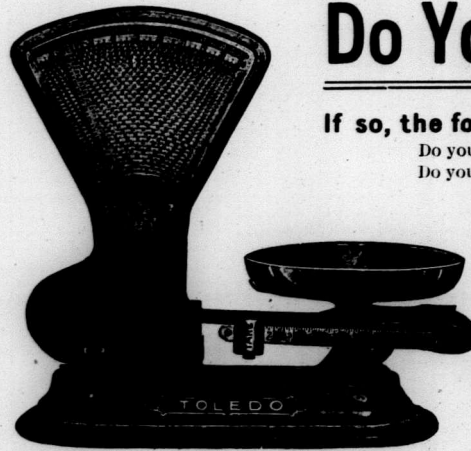
Aetna or
Quaker Flint
Chimneys?

Give them a Trial.
THE SYDENHAM GLASS CO.,
of WALLACEBURG, Limited



For Sale Everywhere.

ASK FOR
MOTT'S



Do You Use Scales?

If so, the following facts should interest you:

Do you desire to discontinue giving down weight?
Do you desire your bulk packages to hold out weight?

If so, the **TOLEDO SPRINGLESS, AUTOMATIC COMPUTING SCALE** will enable you to accomplish this result, as it is the only Scale that gives 16 ozs. to the lb. **no more, no less**, and there is absolutely no such thing as down weight on the Toledo Scale. No springs, no weights to lift on and off, no poises to shift, no human aid necessary.

MADE IN CANADA.

For Descriptive Catalogue and all information write to
DEAN & McLEOD, Canadian Agents,
The Toledo Computing Scale Co.,
HAMILTON, ONT.

James Ewart

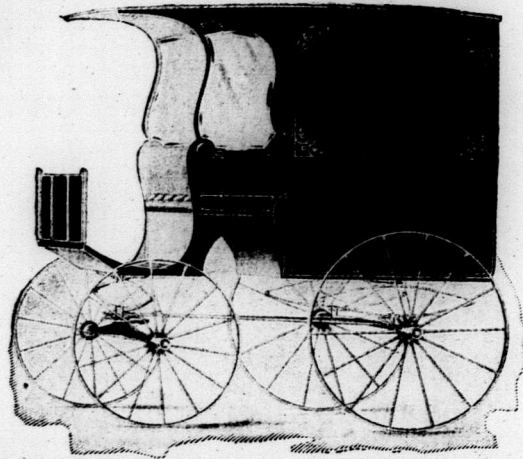
MANUFACTURER OF

High-Grade Delivery
WAGONS

Grocer, Baker, Confectionery, Laundry
Wagons of every description.

257-9 QUEEN ST. EAST
TORONTO.

Write For Prices. Phone Main 1188.



Salmon . . .

RED SOCKEYES

- "Nimpkish"
- "Griffin"
- "Sunset"
- "Lowe Inlet."

COHOES

- "Eagle"
- "Golden Net"
- "Harlock"
- "Empress."

We have yet on hand a few brands of Salmon—some of which are given herewith. A full list of our brands will shortly be published.

We are **Packers of Canned Salmon** and dealers in all classes of

FROZEN, SALTED and PICKLED FISH.

The British Columbia Packers' Association

Cold Storage Plants in New Westminster, B.C.

VANCOUVER, B.C.