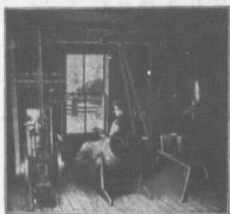


CHURN

WITH A

Fairbanks=

Morse



GASOLINE ENGINE SUPPLYING THE POWER

The Engine can be used for other farm work, such as *Threshing, Feed Grinding, Pumping Water, and Filling the Silo.* The FAIRBANKS-MORSE Engines are portable, economical, well constructed and will work when you want them to. Send the attached coupon for catalogue and copies of testimonials.

The Canadian Fairbanks Co.

LIMITED

Montreal, Toronto, St. John, Winnipeg, Calgary, Vancouver

THE CANADIAN FAIRBANKS CO., Limited,
444 St. James Street, Montreal, Que.

Please send catalogue and copies of testimonials.

Name.....

Address.....

THE MAGNET CREAM SEPARATOR

Has a DOUBLE BEARING to the Bowl

This Double Support to the Bowl enabled John Douglas, Creekfield, Saskatoon, to skim his milk with the MAGNET sitting on the open prairie all last season.

The Double Support to the Bowl prevents wobbling and therefore produces smooth cream.



The Double Support to the Bowl of the MAGNET renders it impossible for the Bowl to get out of balance.

The Double Support to the Bowl of the MAGNET prevents wear. It will surely last a lifetime.

The Double Support to the Bowl of the MAGNET makes it the easiest separator to turn.

The Double Support allows the MAGNET Brake to make a complete turn round the Bowl and stops the machine in 8 seconds without the slightest injury. Patent No. 106897.

The Double Support on the MAGNET enables us, for a few dollars, to increase the capacity from the smallest to the largest size. You buy a MAGNET and when you increase your herd of cows, you can get a larger skimming device for your present machine.

The Double Support on the MAGNET is protected by Patent.

The one piece Skimmer in the MAGNET takes all the cream out of the milk and separates the impurities from both.

The one piece Skimmer in the MAGNET is easy to clean, three minutes only required after each operation.

THE PETRIE MFG. CO., Limited
HAMILTON, ONT. ST. JOHN, N.B. WINNIPEG, MAN.

REGINA, SASK.

WESTERN DISTRIBUTING POINTS:
CALGARY, ALTA.

VANCOUVER, B.C.

Invest Now in Land in the Canadian West

Experience has proved that all good land in the Canadian West, located in a good district, and within 20 miles of a railway station, or nearer, is worth at least \$25 per acre for Home-making. 160 acres of such land will return annually in net receipts as much as 100 acres similarly situated in Ontario, which sells for \$4,000 to \$8,000.

We hold the Exclusive Agency for large blocks of selected lands in Western Canada. Prices from

\$8 to \$25 per Acre

In 1906-1907 we sold over 300,000 acres.

We give SPECIAL TERMS to actual settlers. We allow such to pay for land on the

Crop Payment Plan

Industrious, experienced, thrifty men, if they buy from us, are sure to succeed, because we are prepared to assist them in case of emergency, such as loss by fire, frost, loss of stock or sickness.

If you are a Tenant Farmer, own your farm—we will assist you. If you are a farmer's son, or an experienced farm hand, and wish to start on your own account, write us.

WE WANT RELIABLE REPRESENTATIVES IN EVERY COUNTY.

Address F. W. HODSON, MANAGER LAND DEPARTMENT

Union Trust Company, Limited
174 Bay Street - - - Toronto, Ontario



The "Bissell"

No One Should Think of Buying Any Other Roller

Why? Because no other land roller will begin to give equal satisfaction.

Notice that the "Bissell" is a three-drum roller. It's true it costs more to make a three-drum roller than a two-drum; but you pay very little more for the "Bissell," and get far more value for your money.

The three-drum "Bissell" is heavier and stronger than a two-drum roller, because there are six heads instead of four. Besides, three short drums are easier to turn than two long ones.

And because the axle revolves with the drums and the roller bearings turn on the axle there is no friction, therefore oiling is hardly required. But, of course, you are anxious to have complete details about the "Bissell" Roller, so sit down now and write for our Free Booklet to Dept. B

Sold by local dealers everywhere.

T. E. BISSELL COMPANY, Ltd., ELORA, ONT.

Notice to Farmers and Others

THE TRADERS BANK OF CANADA solicits the accounts of Farmers, School Sections, Churches, Townships, &c. Highest current rate of interest paid on deposits and lowest rates charged on advances. Assets over \$33,000,000.

Head Office: TORONTO

Over 80 Branches