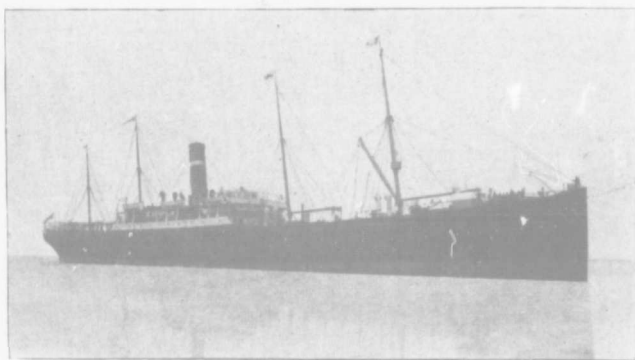


ELDER, DEMPSTER & COMPANY'S LINES



S.S. "MONTEAGLE," TWIN SCREW, 8,500 TONS

Beaver Line Royal Mail Steamers.

Sailing weekly between Montreal and Liverpool in summer, calling at Rimouski and Merville; and in winter between St. John, N. B. and Liverpool, via Halifax and Merville.

S.S. Lake Erie.....	9,000 tons	S.S. Lake Superior.....	5,500 tons
" Arawa	5,600 "	" Lake Huron	4,500 "
" Lake Ontario	5,000 "	" Lake — building.....	9,000 "

Excellent accommodation for all classes of Passengers at moderate rates.

Dominion Line Montreal to Bristol (Avonmouth)

Also from Portland, Me., and Boston to Bristol (Avonmouth) during the winter months.

and London.

S.S. Milwaukee	12,500 Tons	S.S. *Montealm ..	8,000 Tons	S.S. Montpelier...	5,800 Tons
" Monarch	12,000 "	" *Montrose	8,000 "	" Andoni	5,300 "
" *Montozuma	12,500 "	" *Monterey ...	8,000 "	" Ashanti	5,000 "
" *Mount Royal	12,000 "	" *Montmorency	8,000 "	" Lycia	4,500 "
" *Monteagle.....	8,500 "	[building]		" Etolia	4,500 "
" *Montfort	8,500 "	" Montenegro ..	7,100 "	" Mennon	4,250 "
		" Yola.....	6,000 "		

STEAMERS MARKED THUS * ARE FITTED WITH COLD STORAGE.

A limited number of Cabin passengers carried on the Bristol and London steamers at moderate rates.

Steamers of the above line are fitted up with all the modern improvements for carrying Live Stock, Butter, Cheese, Grain and every description of general cargo.

For rates of freight and Passage and other particulars apply to

ELDER, DEMPSTER & CO.,

6 ST. SACRAMENT ST., - - - MONTREAL
and foot of India St., Portland, Me.

Toronto Agency, Elder, Dempster & Co., S. J. Sharp West'n Mgr., 80 Yonge St.
Chicago Agency, John E. Earle & Co., 6 Sherman St. T. A. S. DeWolf & Son, Halifax,
Iroop & Son, - - - St. John, N.B.