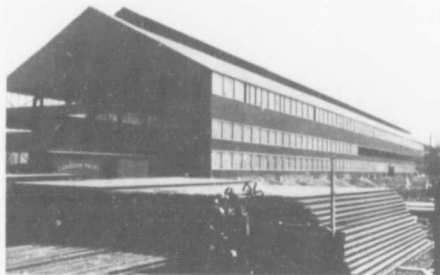


**Interior Merchant Mill.**



**Exterior Merchant Mill.**

Completed November 1st, 1910. Equipment includes one 18-inch mill and one 12-inch mill. Product, all sizes of steel, from 3-8 inch rounds to 8-inch beams and channels and 6 inch angles. also spikes, bolts, nuts and track fastenings. Capacity, 400 tons per day.