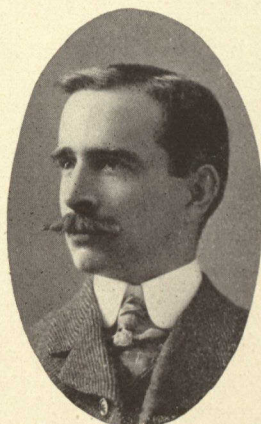


Members of the Executive Committee



LT.-COL. MACPHERSON
Pres. Naval Entertainments



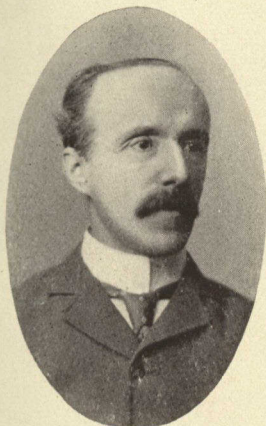
JULES HONE
Pres. Com. on Hotels and Lodgings



HON. T. CHAPAIS
Pres. Com. on History & Archaeology



COL. WM. WOOD
Vice-Pres. Executive Committee



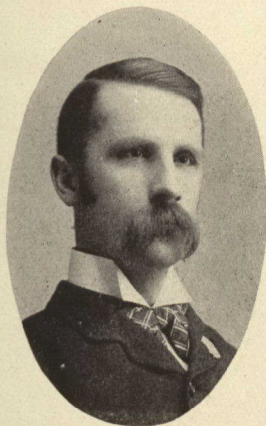
E. MYRAND
Sec. Com. on History & Archaeology



COL. HANBURY-WILLIAMS,
C.V.O. C.M.G.
Military Secretary to His Excellency



R. E. W. TURNER, V.C.
Pres. Committee on Horses



LT.-COL. RAY
President Sports Committee



MRS. WILLIAMS
Joint Secretary Ladies' Committee



MRS. E. B. GARNEAU
Joint Pres. Ladies' Committee



A. J. PAINCHAUD
Chairman Committee on Costumes