

they are arranged upon smooth linings and are finished at the wrists with cuffs that flare slightly at the back of the arm. The back edges of the cuffs are loose, and the back and lower edges of each are decorated with a drooping frill of *point de Gène* lace. At the neck is a standing collar that closes at the left side; it is covered with bias folds of plain silk, and a jabot-frill of *point de Gène* lace is arranged at the center of the chemisette.

Contrasts of shades and materials are best adapted to this picturesque mode, but, if desired, a single texture may be used throughout. Flowered silks and those showing conventional designs in colors upon a black ground will associate effectively with plain silk; and frills of embroidered or plain *chiffon* or lace may be added for garniture. Any preferred combination of wool goods in harmonizing shades will make up attractively in this way, and a third material, which may be velvet, India silk or *crêpe de Chine*, may be introduced for the chemisette.

We have pattern No. 4406 in thirteen sizes for ladies from twenty-eight to forty-six inches, bust measure. To make the basque for a lady of medium size, requires two yards and seven-eighths of plain and three yards and three-fourths of brocaded silk each twenty inches wide. Of one material, it needs five yards and three-fourths twenty-two inches wide, or two yards and seven-eighths forty-four inches wide, or two yards and a-half fifty inches wide. Price of pattern, 1s. 3d. or 30 cents.



4346



4346

#### LADIES' BASQUE.

(For Illustrations see Page 331.)

No. 4428.—Lizard-green Bengaline, chambray, velvet, white *chiffon* and green cloth are associated in this basque at figure No. 418 T in this magazine, with passementerie for decoration.

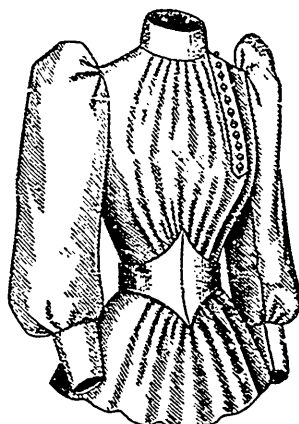
A handsome combination of woollen dress goods, brocaded silk and plain China silk is here pictured in the basque, which suggests somewhat the Louis modes. The back and sides extend to coat-basque depth and are closely adjusted by under-arm darts, side-back gores, and a curving center seam that terminates below the

waist-line above extra width arranged at each side in an underfolded, forward-turning plait, which overlaps the hemmed back edge. Extra width allowed at the side-back seams is underfolded in a forward-turning plait at each side. The fronts open from the shoulders over a full chemisette of plain China silk and a vest of brocaded silk, which are arranged upon short fronts of lining. The vest is adjusted by single bust darts and closed invisibly at the center. The vest is single by single bust darts taken up with those in the fronts of lining, and the back edges of the vest and lining fronts are sewed to the fronts along the under-arm darts. The vest is closed at the center with button-holes and buttons. The lower edge forms a notch below the closing, and the top is shaped in low, rounding outline and finished with a rolling collar. A pocket welt is applied near the lower edge at each side. The chemisette is gathered at the top and bottom, and its upper edge is included in the seam with a standing

collar of China silk. Rising high at the back is a Leicester collar, the ends of which extend but little in front of the shoulder seams, and are lapped beneath the top of revers that are joined to the front edges of the fronts. The revers extend to a little below the bust; three large buttons are ornamentally placed near the front edge of each front; and below the waist-line the fronts are cut away slightly after the manner of a man's dress coat. The coat sleeves rise fashionably high at the top and are finished at the wrists with cavalier cuffs that flare in characteristic fashion at the backs of the arm.

The mode is very picturesque and will develop handsomely in plain and brocaded silk, satin, figured and plain *crêpe de Chine*, Bengaline, faile and all suitable varieties of woollen goods. The mode is so fanciful in effect that little applied decoration is necessary, but, if desired, gimp, galloon, passementerie and handsome braid may be sparingly added.

We have pattern No. 4428 in thirteen sizes for ladies from twenty-eight to forty-six inches, bust measure. To make the basque for a lady of medium size, requires two yards and seven-eighths of plain dress goods forty inches wide, with one yard of plain China silk and a yard and three-eighths of brocaded silk each twenty inches wide. Of one material, it needs five yards and three-fourths twenty-two inches wide, or two yards and seven-eighths forty-four inches wide, or two yards and five-eighths fifty inches wide. Price of pattern, 1s. 3d. or 30 cents.



4346

Front Views.



4346

Back Views.

#### LADIES' RUSSIAN BLOUSE. (COPYRIGHT.)

(For Description see Page 333.)

#### LADIES' BASQUE, WITH EXCHANGEABLE VEST.

(For Illustrations see Page 331.)

No. 4425.—A pretty combination of light goods and velvet is pictured in this basque at figure No. 436 T in this magazine.

Woollen dress goods and velvet are here artistically united in the basque, which extends to a becoming depth and is pointed at the center of the front and back. The superb adjustment is accomplished by double bust darts, under-arm and side

back gores and a curving center seam, and the fronts are cut away from the shoulders to accommodate a vest of the contrasting material. The vest may be permanently sewed at the right side and closed the left side with button-holes and buttons, or it may be buttoned both sides. The coat sleeves are sufficiently full at the top to prominently above the shoulders, and the wrists are plainly completed. At the neck is a becomingly high standing collar of velvet that is closed at the left side.

All seasonable dress goods of either silken, woollen or cotton texture will make up attractively in this way, and several vests may be provided for a single basque. The mode favors a combination of materials, but, if preferred, a single fabric may be used throughout, the vest being made as fanciful as desired by a tasteful application of braid, passementerie, gimp, galloon, etc.

We have pattern No. 4425 in thirteen sizes for ladies from twenty-eight to forty-six inches, bust measure.