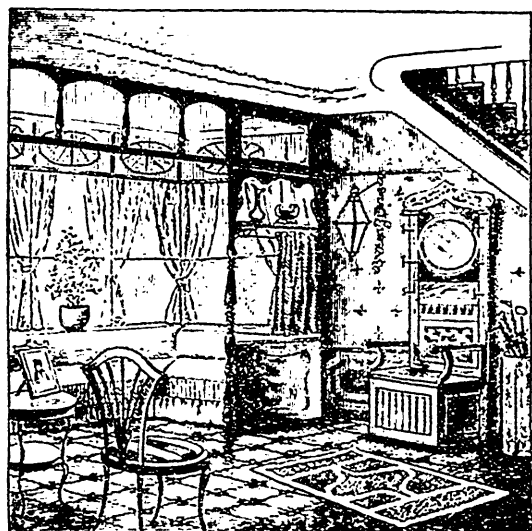


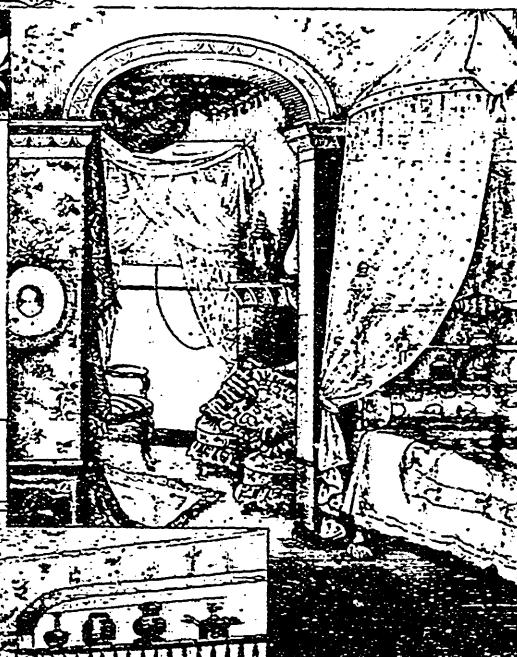
HOUSE FURNISHING AND DECORATION.

The treatment of a room is less a caprice of fashion than an expression of individual fancy. The general plan and purpose of an apartment should suggest not only the style but the kind of furniture required. Heretofore a single color dominated a room, now an association of several colors is in order and, indeed, conveys a happier idea. It has been wisely said that the hall is the keynote of the house. Its message should be a welcome to every new-comer, and this is possible, no matter to what degree simplicity, so it falls short of severity, is observed. The hall in the upper left-hand corner of the page gives an impression of hospitality. The parquet floor is in a light-brown tone and the walls are hung with a light-olive paper bearing a small gilt device, the wood work extending



quite a distance up from the floor, across which lies an oblong Japanese rug. An oak hat-tree, a porcelain umbrella-stand, an upholstered chair and a small table provide suitable furniture and a lamp swung from a bracket fixed to the wall lights the hall by night. A charming feature is a recess having several windows with white casement muslin sash-curtains and a window seat upholstered in light-green denim, a valance of the same falling round the bottom. At the right-hand side a curtain of the denim is adjusted upon a brass rod. Vases are arranged on a ledge above the curtain and a flowering plant stands in the window.

In the next engraving to the right suggestions are given for draping a bed. An olive Brussels filling covers the floor and is



continued into the adjoining room, partly visible through the arched doorway. Oriental rugs lie upon the floor. The bed is of white enamel with brass trimmings. The Turkish bolster is of light-colored China silk and the spread is of white Mar-seilles. The canopy drapery is of white dotted Swiss.

In the third illustration are shown a boudoir and one corner of a bed-room. Rugs lie upon the polished floor of the boudoir. The walls are hung with a faintly tinted rose paper with a design in green and gold, the paper providing an artistic background for the pictures. The doorways have fine spindle grilles and portières of rich Oriental stuffs are draped in them.



spindle grilles and portières of rich Oriental stuffs are draped in them.