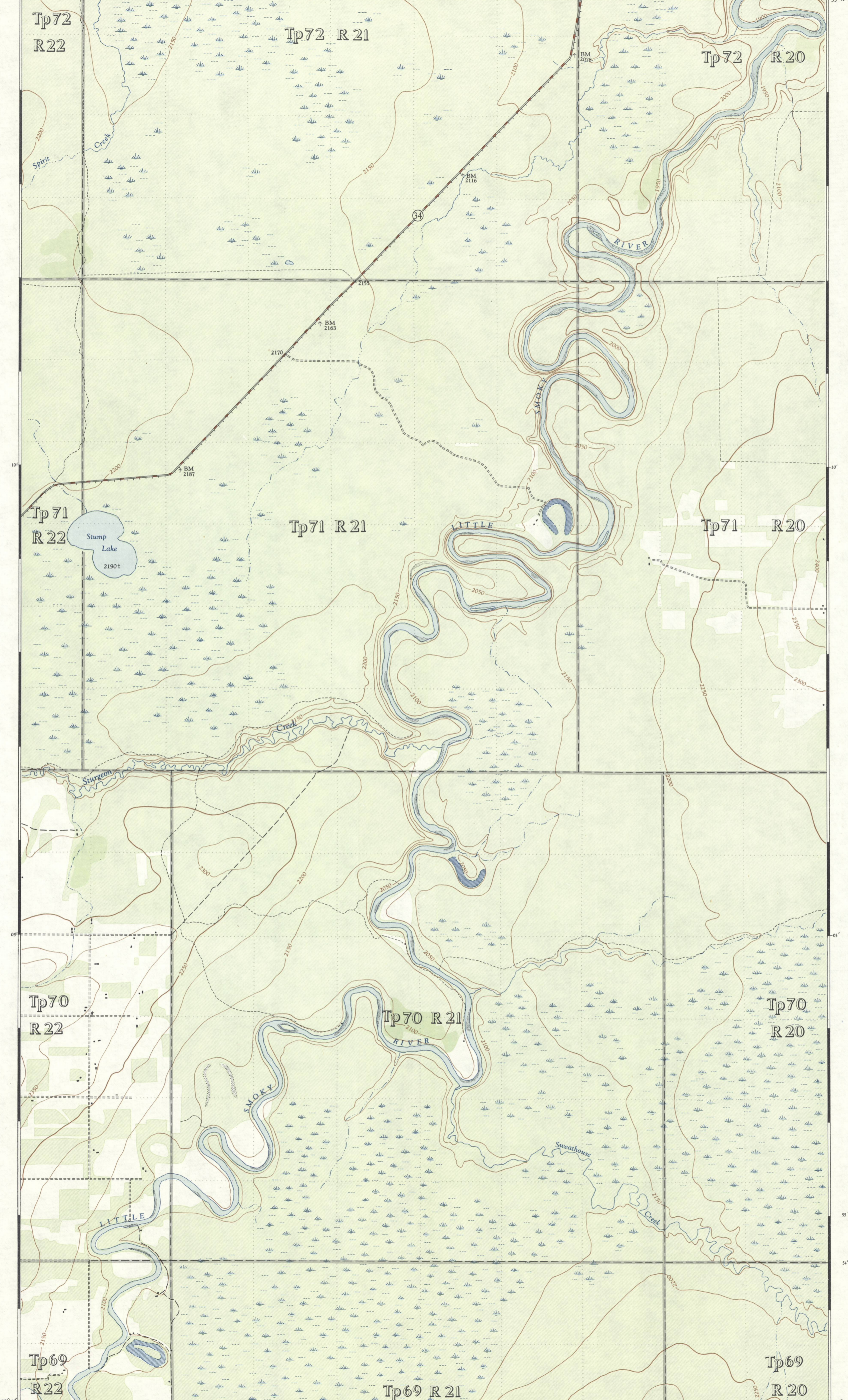




CANADA
DEPARTMENT OF NATIONAL DEFENCE
ARMY SURVEY ESTABLISHMENT



REFERENCE

Roads:	hard surface, all weather	more than 2 lanes	Part completed
	hard surface, all weather	2 lanes	2 lanes
	loose surface, all weather	more than 2 lanes	2 lanes
	loose surface, less than 2 lanes	All weather	Dry weather
Cart Track	Footpath	Trail	
Railways:	standard gauge, multiple track		
	standard gauge, single track		
	narrow gauge, multiple track		
	narrow gauge, single track		
Tramway			
Bridge, underpass or overpass			
Boundary, International			
	Province		
	County or District		
	Township, Seignior or Parish		
	City or Town		
	Reservation, Indian, Military, etc.		
Electric Power Line			
Telephone, trunk route			
Triangulation Station			
Boundary Mon. Survey Mon.			
Bench Mark			
Spot Elevation, (in feet)			
House, Barn			
Buildings			
Mill or Factory, small, Saw Mill, etc.			
School			
Church			
	with conspicuous Tower or Spire		
Post Office			
Telephone Exchange			
Mine or Open Cut			
Cemetery or Churchyard			
Quarry			
Sand or Gravel Pit			
Cliff			
Cutting			
Embankment, Dump, etc.			
Lighthouse			
Wharf or Pier			
Foreshore Flats			
Swamp or Marsh			
Lake or Slough, intermittent			
Glacier or Snowfield			
Stream, intermittent			
Irrigation Canal, Ditches			
Inundated Land			
Contours, elevation			
	depression		
	approximate		
Relief, not indicated by Contours			
Wooded Areas, heavy			
	light		

INDEX TO ADJOINING SHEETS

83 N/3	83 N/4	83 N/5
PUSHKINSKI RIVER	WHITEMUD CREEK	TRIANGLE
83 N/2	83 N/3	83 N/4
STURGEON RIVER	VALLEYVIEW	SNIPE LAKE
83 N/1	83 N/2	83 N/3

The general public may obtain copies of this map from the Map Distribution Office, Dept. of Mines and Technical Surveys, Ottawa, at 25 cents per copy.

VALLEYVIEW
ALBERTA
83 N/3 EAST HALF
FIRST EDITION

SUPERSEDED EDITION