

# LARGE PROFITS

On Fifteen-Year Tontine Dividend Policies recently settled by the

# NEW YORK LIFE

Insurance Co'y,

They are based upon Policies of \$10,000 each.

Kind of Policy.		Cash value Pol. & Div. 15th Year.	Paid-up Ins. Value 15th Year
Ordinary Life.....	30	\$3,515 10	\$8,500 00
" " .....	40	5,137 40	9,760 00
" " .....	50	7,968 90	12,159 00
20-Year Endowm't..	30	10,126 90	24,490 00
" " .....	40	10,666 80	24,250 00
" " .....	50	12,153 70	18,530 00
15-Year Endowm't..	30	14,992 00	38,250 00
" " .....	40	15,584 50	29,600 00
" " .....	50	17,182 00	26,200 00

The Tontine Policies of the New York LIFE furnish, in connection with guaranteed insurance, an investment at a higher rate of interest than is otherwise obtainable on first-class securities.

**DAVID BURKE,**

General Manager for Canada.

Head Office: 23 St. John St., Montreal  
Branch Office, Mail Building, Toronto.

# BRITISH EMPIRE

Mutual Life

Assurance Co. of London, Eng.

ESTABLISHED 1847.

CANADA BRANCH, MONTREAL.

Canadian Investments, nearly - - - - 700,000

## ACCUMULATED FUNDS.

1867 .....	\$ 565,000
1865 .....	1,185,000
1873 .....	2,810,000
1881 .....	4,210,000
1883 .....	4,780,000
1885 .....	5,304,000
1888 .....	6,386,000

**F. STANCLIFFE** General Manager.

General Agents, - Toronto,  
J. E. & A. W. SMITH.

# GLASGOW & LONDON

Fire Insurance Co.

CANADIAN BRANCH.

HEAD OFFICE:  
CORNER NOTRE DAME AND ST. HELEN STREETS,  
MONTREAL.

## DIRECTORS:

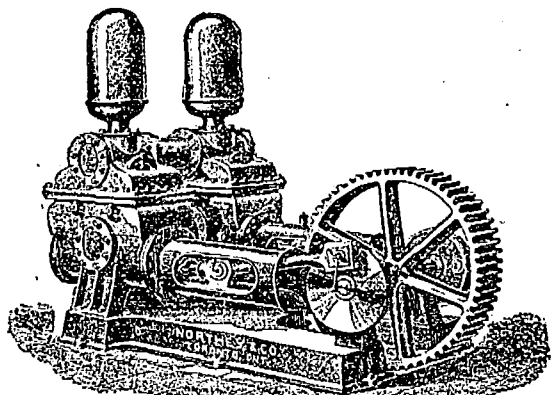
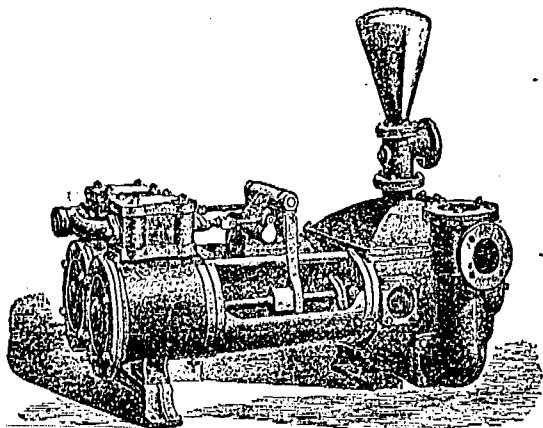
W. H. HUTTON, Esq., (James Hutton & Co., Montreal), Chairman.  
W. H. CASSILL, of the Dominion Transport Co.  
D. GIBOUARD, M. P., Q. C., Montreal.  
LERRATT W. SMITH, D. C. L., President Building and Loan Association, Toronto.  
ROBT. C. JAMIESON, Esq., Montreal.  
S. NORDEIMER, Esq., President Federal Bank, Toronto.  
Geo. R. R. COOKBURN, Esq., (President Toronto Land and Investment Co.), Toronto.

**J. T. VINCENT and**  
**Richard FREYANG** } Joint Managers

## INSPECTORS:

W. G. BROWN. O. GELINAS.  
A. D. C. VAN WART.

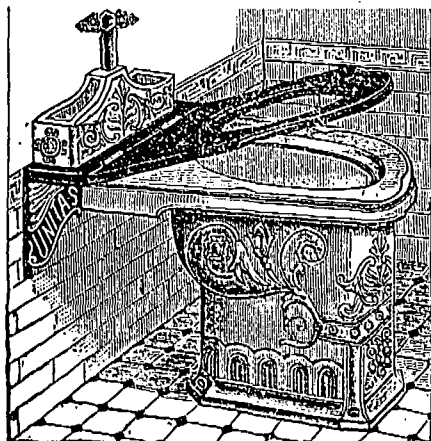
\$1.00 Cash deposited with Canadian Government for every dollar of liability.



SINGLE and DUPLEX Steam and Power Pumps for Boiler Feeding, Fire Protection, Water Supply, Mining Use, Etc. INDEPENDENT AIR-PUMP CONDENSERS for attaching to High Pressure Steam Engines. DOUBLE ACTING BREWERS' AIR PUMPS, ACID PUMPS, SPECIAL MASH PUMPS for Brewers' Use. TANK or LOW PRESSURE PUMPS, Etc.

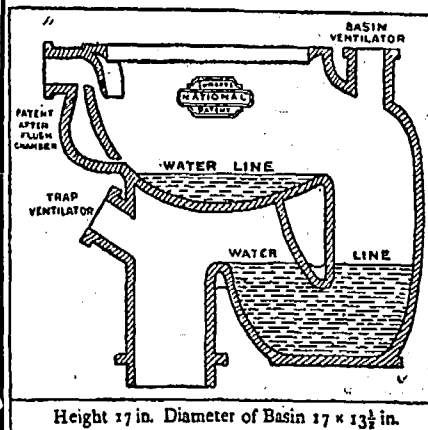
**NORTHEY & CO.,** - - - - Toronto, Ont.  
Office and Works, cor. Front and Parliament Sts.

## "UNITAS"



Twyford  
Sanitary  
Potter,  
Hanley,  
England.

## "NATIONAL"



Height 17 in. Diameter of Basin 17 x 13 1/2 in.

Manufacturer of all Descriptions of Sanitary and Plumbers' Earthenware, and Sole Maker of the "National," "Alliance," and "Crown" W. C. Basins.

AGENTS FOR CANADA:

**JORDAN & LOCKER,** | 1749 Notre Dame st. - 1749  
**MONTREAL.**

SHOWROOMS:

Where the 'Unitas,' 'National' and other Specialties can be seen in action

NEW YORK SHOWROOMS: 100 Beekman Street, E. ASPINALL, Agent.