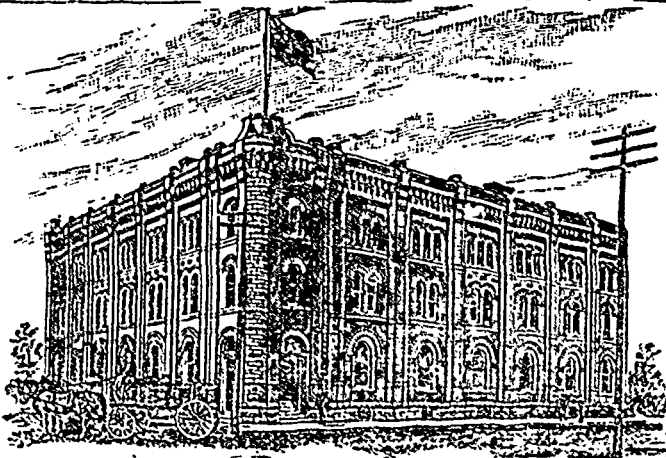


GOODS SOLD TO THE
TRADE ONLY.GOODS SOLD TO THE
TRADE ONLY.

G. F. & J. GALT,

DIRECT IMPORTERS

TEAS, SUGARS, WINES, LIQUORS and GENERAL GROCERIES
CORNER PRINCESS AND BANNATYNE STREETS, WINNIPEG, MANITOBA.

British Columbia.

Ontario turkeys are offered freely in provincial markets.

So far this winter, 18 feet of snow has fallen at Rogers Pass.

B. L. Wood, tailor, Vancouver, has sold out to D. Campbell.

W. H. Smith, carriages, Kamloops, is reported to have left the country.

W. Van Houten will open a hardware, stoves and tinware store at Nanaimo.

Milligan & O'Brien have obtained a license as wholesale liquor dealers at Donald.

The Ames Holden Co. take possession of W. Heathorn's shoe factory at Victoria on Feb. 1st.

The excitement over the discovery of gold on Texada Island still continues, and licenses are being issued every day. Forty-five mining licenses have been issued already.

E. A. Jenns, barrister, has been admitted a partner in the law firm of Corbould and McColl, of Westminster. The title of the new firm is Corbould, McColl & Jenns.

There is some talk of a sugar refinery being established in the province, the firm of Welsh, Rithel & Co., of Victoria, being mentioned in connection with the proposed enterprise.

It has been rumored that the Northern Pacific Railway Company will purchase the franchise of the proposed road from Westminster to Seattle and Puget Sound, and extend the road to Vancouver. Officials of the proposed road deny the rumors.

The steamship Parthia sailed from Vancouver on Tuesday for Yokohama with seven passengers, twenty-nine Chinese, and a full cargo, consisting of 1,892 tons weight and 2,611 measurement. A large quantity of freight was left behind, the Parthia being unable to carry it.

G. W. Grant, of New Westminster, has prepared plans for the new court house to be erected in that city, which have been approved by the Government. The building, which will be brick and stone, will be two stories besides

basement and attic, and have a frontage on each street of about 80 feet, and will be a substantial and imposing structure,

Donald Truth: Parties now in Donald, in the interest of a French syndicate, are looking over the ground with a view to the erection of a large reduction works here. The French syndicate are the owners of the great Lexington mine and mill at Butte, Montana. The syndicate propose to erect works after the plan of those at Wickes, Montana, so as to be able to cheaply handle all grades of ore.

Sheriff Armstrong has instructed R. W. King, architect, to draw up plans and specifications for a fine brick block which will be erected on Columbia street, Westminster. The building will have a frontage of 46 feet and a depth of 62 feet, and will be two stories high with basement. The cost of the building will be from \$10,000 to \$12,000. Mr. Armstrong has already leased the ground flats of the proposed building.

The Ames Holden Co., operating a shoe factory at Montreal, and branch wholesale stores at Winnipeg and Victoria, has recently purchased the shoe factory at Victoria, owned by W. Heathorn. This is quite a large establishment, giving employment to about 75 men. It is understood the Ames Holden Co. will greatly increase the capacity of the Victoria factory. Mr. Heathorn owns a tannery at Victoria, which he will continue to operate.

Nanaimo Courier: A number of specimens of ore from Texada Island have been forwarded to Dr. Bredemeyer, assayer at Vancouver. The specimens are very rich, one containing free gold, assays \$300 to the ton. Some of the samples also contain rich indications of copper. Quite a number of prospectors left for Texada last night and on Wednesday, and by the time the flowers bloom in the spring, it is supposed that there won't be ground enough left upon which to effect a peaceable landing, much less locate a claim.

Donald Truth: Several practical tests at Golden have shown that the slate from the Walter Hogg quarry is a first-class roofing slate. The men who are expending large sums of money

JAMES PYE, FLOUR MILL BUILDER

CONSULTING ENGINEER, &c
218 Third Avenue South,
MINNEAPOLIS, - MINN.

A Manitoba Testimonial.

PORTAGE LA PRAIRIE, Dec. 8th, 1887.

JAMES PYE, Esq., Minneapolis, Minn., U.S.A.:
DEAR SIR,—In handing you our check for \$1,801.24, in full for balance of your contract for building and enlarging our mill, we without solicitation wish to state, that you have done your work in a manner highly satisfactory to this company. The capacity which you guaranteed at 275 barrels we find considerably under the mark, as we are at present making over 300 barrels, and the quality of the flour is all that we could wish for. Some of our largest purchasers frankly tell us, it is equal to any flour made in either Minnesota or this province. The yield also we find very satisfactory. We must also bear testimony to your pleasing and gentlemanly manner, and your willingness at all times to meet our wishes. This has made our business relations pleasant and we can honestly say, that we recommend you to any person, requiring anything in the mill building or mill furnishing line. Wishing you the success that attends dealing merits, we are
Yours very truly,

THE PORTAGE MILLING CO.
Jas. MacLennan, Managing Director.

in business blocks and residences at Victoria, Vancouver and Westminster would add another industry to those of our province if they aided in opening up this quarry. At present, roofing slate has to be brought from Quebec, and is too expensive to be generally used. The quarry is distant but 6½ miles from Golden, and is within a few yards of the C. P. R. track.

Vancouver News: The volume of business during the last week was slightly in excess of that of the previous fortnight, and is slowly but surely picking up again. The fish market continues to be well supplied; about 4,000 pounds daily being received, three quarters of which, on an average, was shipped east. California fruits are becoming more plentiful, but as yet have not decreased in price. Apples have gone up slightly. Fresh eggs are beginning to come in, and are quoted at 40c wholesale. Creamery butter is quoted at 29c.

Vancouver World: The claim recently located on Texada Island, about five miles above Gillis Bay, and which is owned by Easson, Jenkins, Prowse, Tree and Tippett, seems to give promise of being a most valuable find. Very little development work has been done, but already a fine ledge, carrying copper, silver and gold, has been struck. The gold-bearing vein is from 6 to 12 inches in width, and judging from samples, it is of the richest description, fairly bristling with native gold. A shaft has been sunk to the depth of about 25 feet, and a short tunnel has also been run. The work of development will be vigorously prosecuted. The find has created considerable excitement in this city, and already numerous parties are being fitted out, with the purpose of going to the spot and locating claims.

At the last meeting of the Westminster board of trade a resolution was passed instructing the secretary to call the attention of the federal government to the importance of having a United States consular agency established at this city. At present, when goods are exported to the United States it is necessary to send to Vancouver or Victoria in order to procure the necessary papers. This entails considerable delay, and often involves a good