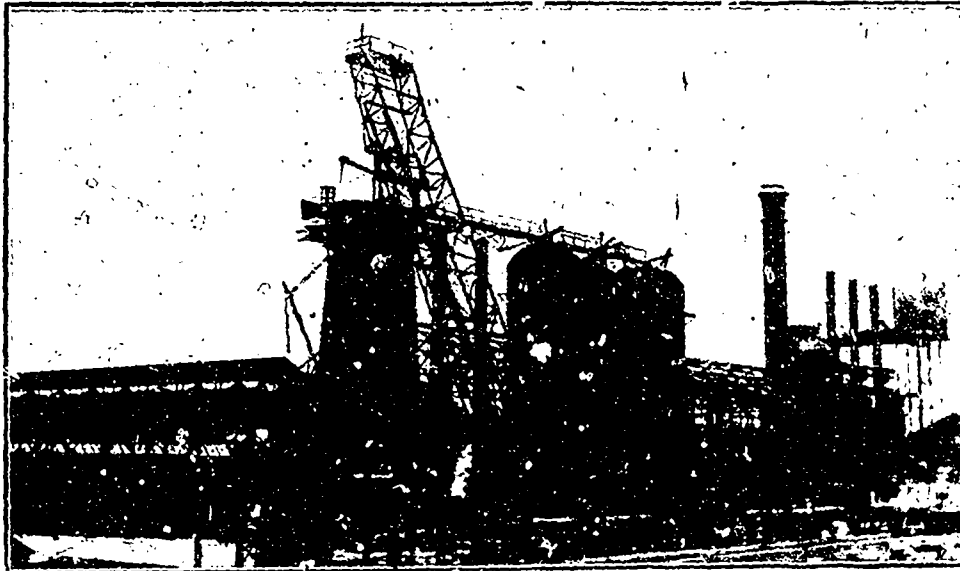


THE HAMILTON STEEL and IRON CO., Limited
HAMILTON, - - CANADA

**FIG
IRON**



**BASIC
MALLEABLE
FOUNDRY**

The above cut represents our Blast Furnace No. 2 under construction as at May 18, 1907.
In distance Furnace No. 1 in Operation.

This furnace will be completed and in operation in August, increasing our daily output of Fig Iron to 500 tons.

We are now contracting for 3rd and 4th quarter deliveries.
Your orders are solicited.

F O R G I N G S

**CRANK SHAFTS,
CONNECTING RODS,
PISTON RODS,
LATHE SPINDLES,
SHAFTING, ETC.**

FORGINGS OF ANY DESIRED HIGH CARBON FOR
SPECIAL WORK.

CANADA FORGE CO., LIMITED
WELLAND, ONT.