

MELOTTE

Cream Separator

There is only one "Melotte"—The "Melotte" that we have been selling to Canadian Farmers for 25 years.



FOUR MODELS—15 SIZES

Skims Cleanest
Turns Easiest
Lasts Longest

Everybody Knows It.
The Cream Separator with the Suspended Bowl

Think of it! A bowl hanging naturally on a ball-bearing spindle—a *real* self-balancing bowl.

Large stocks of the "Original Melotte" just received from England. Order now from nearest local agent.

R.A. LISTER & CO (CANADA) LIMITED
TORONTO & WINNIPEG



Cord or
Fabric.

"A well shod horse
travels surest and
farthest"

THE car equipped with Partridge Tires runs almost free from the delays and inconveniences caused by tire troubles. Partridge Tires have so unquestionably proved their dependability and economy that they are to-day recognized as "the most service for your money" tires.

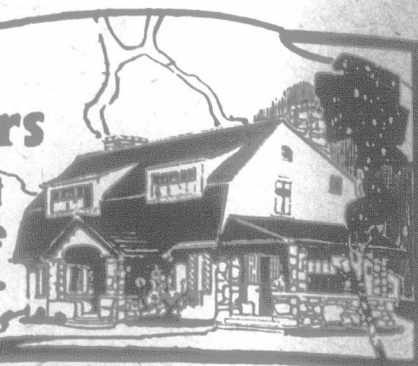
115A

PARTRIDGE TIRES

Game as Their Name

that
Home of yours

An Imperial Endowment
will pay off the mortgage
whether you live or die.



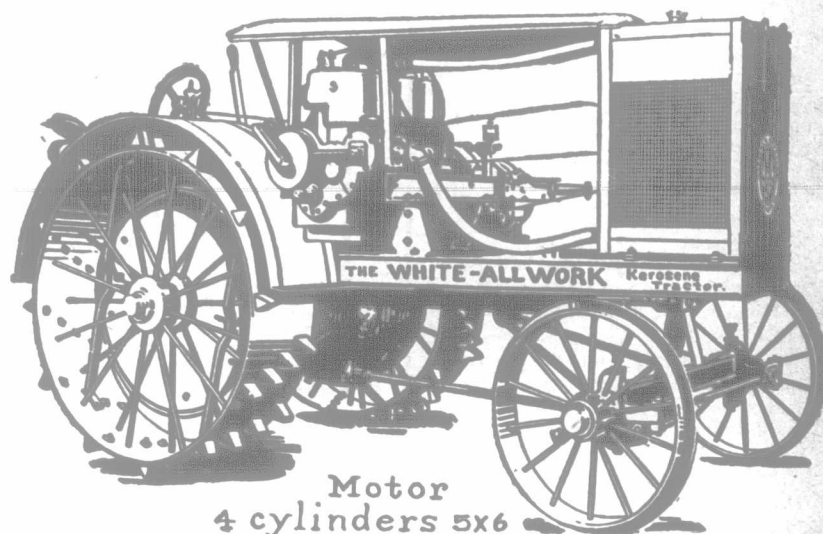
The **IMPERIAL LIFE ASSURANCE CO.**
OF CANADA
HEAD OFFICE TORONTO

Of Sterling Worth

Are the Policies issued by The Great-West Life Assurance Company. Some men look upon the provision of Life Insurance as an expense to be avoided as long as possible. How often has this procrastination brought illimitable distress to a man's household in later years?

Life Insurance is the one safe means by which continuity of one's life plans may be brought to a successful issue. Ask any old-time policyholder to explain the merits of his Insurance and correspond with us when we will explain the merits of the policies issued by

The Great-West Life Assurance Company
Dept. "Z" Head Office, WINNIPEG



Motor
4 cylinders 5x6

The White-Allwork Kerosene Tractor

Sensible Every-Season Tractor

When you buy a tractor you want an all-weather, all-work power plant. The White-Allwork has power for every farm job. It is light enough to work on wet land or a soft seed-bed. Yet it has enough power for heavy field work. It runs on four wheels, and works well on rough land. Turns in 12-ft. radius.

It carries the largest engine we know of on any 3-plow tractor. The engine is set crosswise on

the frame so that the belt pulley is in a direct line with the crank shaft. There are no bevel gears. It will run a 16-inch ensilage cutter or a 28-inch separator.

It will pull an 8-foot road grader.

The White-Allwork is a compact, sturdy, and easily handled tractor, well worth a place in "The First Quality Line."

How You Can Use It
We will gladly tell you what this practical tractor will do. You can then figure out how you can use it to save money. Write for descriptive catalogue.

The Geo. White & Sons Co., Ltd.,
Moose Jaw, Sask. LONDON, ONT. Brandon, Man.

Don't forget we are recognized leaders in Steam Tractors and Threshers
"THE FIRST QUALITY LINE"

2

V.

ED

Swat the rooste

It is not too lat

Keep the culti

Killing a weed
of hoeing later on.Break up the b
remaining idly on tThere is some fa
new luxury tax, bu
is able to make upSenator Hardin
publican party lead
he will endeavor toCanada produce
ducts in 1919. Incl
pounds of creamery
cheese.Save this issue.
and will often come
back to the many v
in these columns.It is stated by c
ducts should form 4
of us eat enough of b
many of us drink enEternal vigilanc
potatoes. The spr
the vines and the t
ravages of blight anAfter the twen
possible to know jus
do feel on the questi
thing to give the Go
know what to do wiButter grading
throughout Ontario
been able to get toge
best butter, much r
been made earlier.Machine politics
triumph in the R
Warren G. Harding,
the United States.
a semi-obscure at aDo not neglect
sometime during the
The Provincial Depa
assist you, and it wi
to have only those h
possible now to cull
able next winter.These who are se
summer silage will b
is over. As a suppl
summer it will be ir
had the advantage o
have made provision