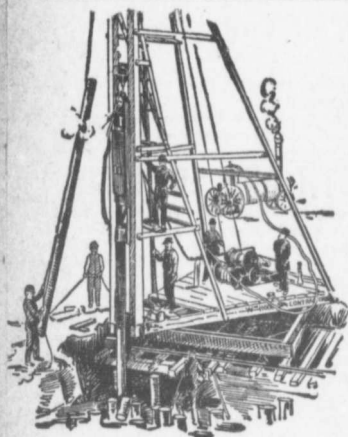


asphalt pavement on Lowther avenue from St. George street to Spadina Road, cost \$6,091, and Chicora avenue from Avenue Road to Bedford Road, cost \$5,755.—Bond & Smith, architects, are taking tenders up to the 9th inst. for alterations and additions to Ontario Bank building at Peterboro.—Building permits have been granted as follows: Walter Stubbings, two-storey brick dwelling, 138 Grace street, cost \$1800; Richard Dunkley, two-storey

brick residence, Pearson avenue, near Soranren avenue, cost \$2500; Gutta Percha and Rubber Co., two-storey brick addition to factory, West Lodge avenue, \$1600; Fred Ingram, pair semi-detached brick and roughcast dwellings, 440-442 Logan avenue, cost \$1600; J. A. Harvey, two-storey brick dwelling, Delaware avenue, near Dewson street, cost \$4000, also pair two-storey brick dwellings, corner Bathurst and Ulster street, \$5000; J. Wheeler, five two-storey brick dwell-

ings, Ossington avenue, near College, cost \$7000; Dr. Thomas Butler, two-storey brick detached dwelling, Euclid avenue, near Ulster street, cost \$2,200; B. J. Howes, alterations to dwellings, 631 to 641 Lansdowne Avenue, cost \$1,200; C. H. Westwood & Co., five storey warehouse, west side Bay street, near Wellington, cost \$10,000; E. A. Drummer, pair of dwellings, Huron street, near Bernard avenue, cost \$8,000; L. Schepp, two storey warehouse, Spadina avenue,



## PILE DRIVING

on land or water by Steam Pile Drivers or Drop Hammers.

**Portable Boilers  
Hoisting Engines  
Pumping Machinery  
TO LET**

Bridge Building, Trestle Work, Wharves, Dams, Diving Submarine Work and General Contracting.

**WM. HOOD & SON**  
10 Richmond Sq. - MONTREAL

## DEBENTURES

Municipalities contemplating the issue of Debentures will find it to their advantage to communicate with

**G. A. STIMSON & CO.**

Investment Dealers

24 and 26 King St. W.

TORONTO

*The DeLano-Osborn Engineering Co., Limited*  
506 Mannin g Chambers, Toronto.

**CONSULTING AND DESIGNING ENGINEERS.**

Consultations, Plans, Specifications and Superintendence for Bridgework, Steel Building Frames, Portland Cement Plants, Power and Miscellaneous Plants, Water Power Development, Electric Railways, etc.

*Inspectors of Structural Material and of Railway Equipment.*

**Pittsburgh Testing Laboratory,  
LIMITED**

*Inspecting and Metallurgical  
Engineers and Chemists*

**SPECIALTIES:** Inspection of RAILS and all material for BRIDGES, BUILDINGS, and other structures, cast iron pipe, wood and steel railroad cars.

**MANUFACTURE AND ERECTION.** Expert examination and reports, chemical analyses and physical tests of all kinds, Cement Testing.

146 St. James Street, - Montreal, P.Q.

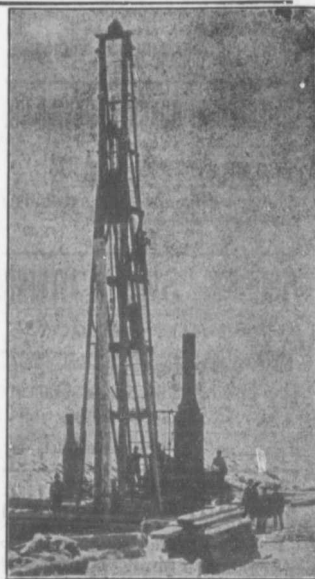
THE STEEL "CHAMPION" IS THE KING OF GRADERS

"CHAMPION" Road Machines are now in use in every Province of Canada.



Address for 20th Century Catalogue

**The Good Roads Machinery Co., Limited**  
(Late Kilbey-Reckett Engine Works)  
144 YORK STREET - HAMILTON, ONT.



## PILE DRIVING

and Foundation Work.

By 5-ton Automatic Steam Pile Hammer, Water Jet or Drop Hammers, Dock Building, Submarine Work and Dredging.

**BUILDING MOVER AND WRECKER**

General Contracting.

**JNO. E. RUSSELL, - Toronto**

906 Queen St. E.—Phone M. 2007.

# Pumps for Waterworks

**Waterworks Systems  
Installed**

*Steam, Hydraulic, Electric,  
Gasoline, Air Lift and  
Automatic Rams.*

**Steam Boilers and  
Filters**

*Write for Prices and Particulars*

**The John McDougall**

CALEDONIAN IRON WORKS CO., LIMITED

MONTREAL, P.Q.

