

The title "THE BEEHIVE" is rendered in a rustic, hand-drawn font where the letters are constructed from twigs and branches. The word "THE" is smaller and positioned above "BEE". A detailed illustration of a beehive sits on a wooden stand in the center, flanked by flowering plants and leaves. The entire scene is enclosed within a rectangular frame made of rough-hewn branches, with bees depicted flying near the top corners.

VOL. 1.

MARCH, 1875.

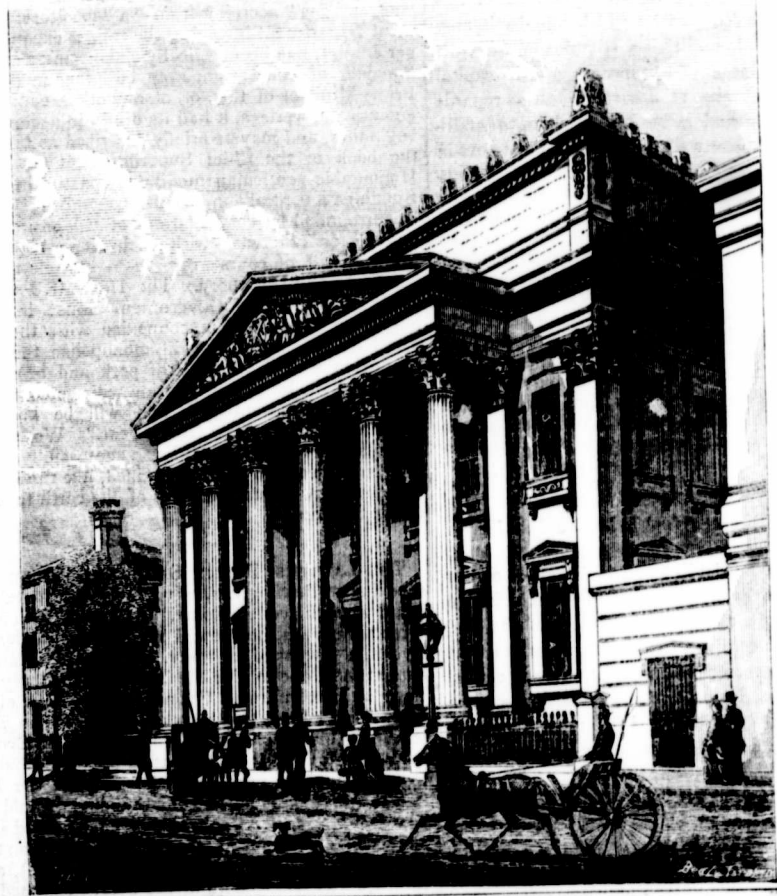
No. 3.

PUBLISHED MONTHLY.

Postage paid on English and American Subscriptions at the Office of Publication.

5 CENTS PER COPY.

All rights reserved. All communications must bear the name and address of the writer, not necessarily for publication, but as a guarantee of good faith. Rejected communications cannot be returned. Contributors will be remunerated according to merit. Possessors of suitable subjects for illustration will oblige by communicating with the Editor in respect to them.



THE BANK OF MONTREAL, AT MONTREAL.