

**CANADIAN
PACIFIC**

Trains to Muskoka

Start Saturday, June 22nd
"LAKELAND LIMITED"

Fast express, daily except Sunday. Leaves Toronto at 11.30 a. m., arriving at Bala 3.00 p. m. Parlor cars, dining car and coaches.

Connects at Bala with Muskoka Navigation Co.'s steamers for all points on Muskoka Lakes.

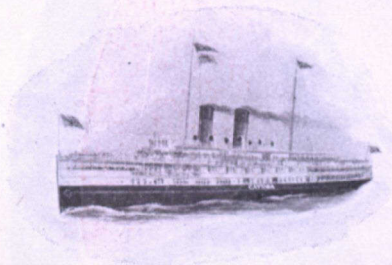
LOCAL EXPRESS leaves Toronto at 9.00 a. m., daily except Sunday, arrives Bala 1.17 p. m.

LOCAL EXPRESS leaves Toronto 4.50 p. m., daily except Sunday, arrives Bala 9.10 p. m.

Starting June 29, the "Sunrise Express" will also run, leaving Toronto 2.30 a. m., daily except Monday (passengers can board sleeper at 10.00 p. m.) arriving Bala 6.10 a. m. Through sleepers Pittsburg, Buffalo and Toronto to Bala. EQUALLY GOOD SERVICE SOUTHBOUND.

C. B. FOSTER, District Passenger Agent, C.P.R., TORONTO

Niagara Navigation Co. (Limited)



CONNECTING

TORONTO — NIAGARA FALLS — BUFFALO

6 trips daily (except Sunday). Write for Illustrated Booklet.

B. W. FOLGER, Manager, TORONTO, CANADA



Short Line

TO

MUSKOKA - PARRY SOUND

Direct to the Centre of the Lake District

THE CONVENIENT WAY

OFFICES: Corner King and Toronto Sts., and Union Station
TORONTO

Lake Shore Ry.



"AMERICA'S GREATEST
RAILWAY SYSTEM"

6 HOURS

BETWEEN

Buffalo and Pittsburgh

By using the famous

Pittsburgh Limited

Leaving Buffalo - - - 10.00 a.m. Daily

Arriving Pittsburgh - - - 4.00 p.m. Daily

Other good trains for Pittsburgh leave
Buffalo EVERY DAY

1.25 p.m. 2.00 p.m. 11.55 p.m.

Call at Ticket Office, 80 Yonge St., Toronto
(Telephone Main 4361) or write C. H. Chevee,
G.E.P.A., 410 Fidelity Bldg., Buffalo, N.Y.



**"Highlands
of
Ontario"**

The ideal Summer Resort region of America,
including the following fascinating districts :

MUSKOKA LAKES

LAKES SIMCOE AND COUCHICHING

LAKE OF BAYS

MAGANETAWAN RIVER

TEMAGAMI

LAKE NIPISSING AND FRENCH RIVER

30,000 ISLANDS GEORGIAN BAY

ALGONQUIN PARK

KAWARTHA LAKES, Etc.

40,000 SQUARE MILES of
lake, river and island scenery.

1,000 to 2,000 feet above sea level. Fishing—Shooting
—Canoeing—Camping. PERFECT IMMUNITY FROM
HAY FEVER. Splendid train service to all districts via
GRAND TRUNK RAILWAY SYSTEM.

Booklets descriptive of any of the above districts free on
application to J. D. McDONALD, District Passenger Agent,
Toronto, Ontario.

W. E. DAVIS
Passenger Traffic Manager
MONTREAL

G. T. BELL
Gen. Pass. and Ticket Agent
MONTREAL