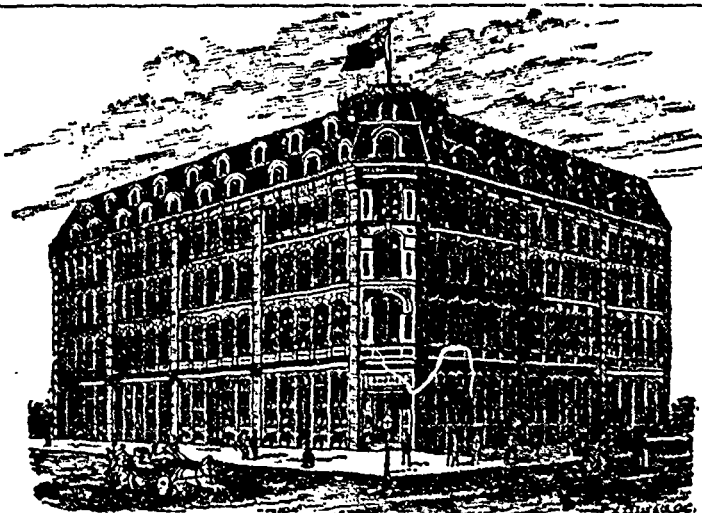


MEN'S, BOY'S and YOUTH'S CLOTHING  
CHILDREN'S CLOTHING a specialty.



Our Samples for the Spring Season 1889,  
are now on view at 35 Lombard St., Winnipeg

## H. SHOREY and CO., WHOLESALE CLOTHIERS,

1866, 1868 and 1870 Notre Dame and 36, 38, 40 and 42 St. Henry St., MONTREAL.

**J. & A. Clearihue,**  
COMMISSION MERCHANTS  
AND MANUFACTURERS AGENTS,  
Dealers in—

**Fruits and all kinds of Produce**  
YATES ST., VICTORIA, B.C.

Representing D. Richards, Manufacturer of Laundry  
and Toilet Soaps, Woodstock, Ontario; Jas. Hall & Co.  
manufacturers and dealers in Gloves, Mitts and Moccasin  
Brookville.

Consignments Received in all Lines. Correspondence Solicited.

**Schmidt & Buss,**

—WHOLESALE DEALERS IN—

**BULK AND CAN  
OYSTERS**

FRESH AND SALT FISH, POULTRY, &c.

Cor. Main and Logan Streets,  
HIGGINS' BLOCK, WINNIPEG  
Send for Price List

**Williamson, White & Co.,**

28 WELLINGTON STREET WEST,  
TORONTO.

**IMPORTERS OF FINE WOOLLENS**

AND TAILORS' TRIMMINGS.

Send for Price List

**STANDARD OIL COMPANY,**  
(CLEVELAND, OHIO)

Manitoba & Northwest Department, Winnipeg.

**ILLUMINATING OILS LUBRICATING**

GASOLINE, AXLE GREASE, CANDLES and all  
PRODUCTS OF AMERICAN PETROLEUM.  
Our stock here embraces all the Manufactures of the  
Standard Oil Company. Correspondence solicited.

W. P. JOHNSON Mgr., Office 343 Main St  
CAPITOL CYLINDER ELDERADO ENGINE CHALLENGE MACHINERY

**THE DRIARD,**

VICTORIA, B.C.

The only strictly first-class hotel  
in the province.

**LELAND HOUSE, VANCOUVER,**

British Columbia.

The leading commercial hotel of the city.  
Directly above the C.P.R. Station and Steam-  
boat wharf. All modern improvements. Sample  
rooms for travellers.

J. E. INSLEY, Mgr. WM. PROUT, Prop

**The Canadian Rubber Co**  
OF MONTREAL.

Manufacturers of

RUBBER SHOES, FELT BOOTS,  
RUBBER PACKING, HOSE, &c.

WORKS: Papineau Square,  
WAREHOUSE: 335 St. Paul St. Montreal

Branch: Cor. Front & Yonge Sts., Toronto.

**JOSEPH CARMAN,**

WHOLESALE

**Commission Merchant,**

WINNIPEG, - MAN.

Dealer in Pickled, Dried and Smoked Fish,  
Eggs, Butter, Cheese, Meats, Lard, Green and  
Dried Fruits, Poultry, etc.

Orders, Consignments and Correspondence Solicited,  
Reference: Commercial Bank of Manitoba, Winnipeg.

**For Sale at a Sacrifice**

Several Pool and Billiard Tables. Nearly  
new, and with attachments complete. May be  
seen at SCOTT & LESLIE'S Furniture Ware-  
rooms, Winnipeg.

**STATIONERY**

**WARWICK & SONS,**

Publishers, Wholesale Booksellers  
Stationers, Printers, Bookbinders, etc.

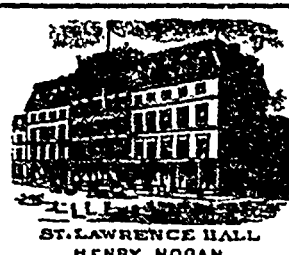
TORONTO, ONT.

Large and Complete Stock of Stationery.

WRITE FOR SAMPLES AND QUOTATIONS.



First-class in every respect.  
Appointments Perfect.  
Graduated Prices.



Every Attention paid to  
Guests.  
MONTREAL.

ST. LAWRENCE HOTEL  
HENRY, HOGAN.

Prices in British Columbia.

The Vancouver News says: The fish market  
has been kept well supplied, from three to four  
thousand pounds daily being placed thereon.  
About a sixth of this was used for local con-  
sumption and the balance shipped to the east.  
Dairy produce is bringing high prices, and the  
best qualities are scarce. Vegetables are gradu-  
ally increasing in price, and decreasing in qual-  
ity and quantity. There are, however, a quan-  
tity of good potatoes, cabbage and turnips still  
on the market. California fruits are beginning  
to come in. A shipment of Washington Naval  
oranges was received on Thursday, and River-  
side and California oranges have been in for  
some time. Sicily lemons are also on the mar-  
ket. Oysters are scarce, and are quoted at  
75c. per tin wholesale.

Quotations at Vancouver last week were:  
Flour—Manitoba patents, \$6.65 per bbl.; Mani-  
toba bakers', \$6.25; Columbia's Milling Co's.  
patents, \$6.25; straight grade, \$5.75; bakers',  
\$5.25; Oregon family, \$6. Oatmeal—Standard,  
100 lb. sacks, \$3.00; granulated, \$3.25; rolled,  
\$4.00. Potatoes—\$13 to \$18 per ton; cabb-  
age, \$12; carrots, \$20; parsnips, \$20; onions,  
\$30; beets, \$15; turnips, \$15 to \$20; sweet pota-  
toes, \$6 per cwt. Feed—bran, \$25 a ton;  
shorts, \$27; chopped stuff \$33 to \$35; oil cake  
meal, \$40; oats, \$26 a ton; wheat, \$35. Dairy,  
etc.—Butter, creamery, 30c per lb.; dairy, 25c;  
cooking, 18c; eggs (pickled), 30c; fresh, 35c.  
Cheese, 13 to 15c per lb. Fruits—Oranges, \$7  
to \$7.50 per case; lemons, \$9 per case; figs,  
15c. to 20c. per lb.

R. S. McLEAN will open a merchant tailoring  
business at Carberry, Man.