

can be used in place of green. The plants should be knocked out of the pots and placed in other receptacles; if the latter are too small or shallow to receive the plants, the balls can be reduced or cut to fit.



A Centrepiece of Fruit and Flowers

If no receptacles are on hand, the plant can be placed on pieces of paper or other material to save the cloth. Mounds of moss can be made around the ball of earth and covered with fern, asparagus, smilax or other green; and flowers of one kind and color placed on the mounds.

SOME FLOWER COMBINATIONS

But orchids, such as cattleyas in variety, cypripediums, lœlias, oncidiums, odontoglossums, cœlogyne, calanthes, and so on, make rich and beautiful decorations for the table. Each kind should be used separately and arranged so that every individual bloom will not look crowded and will show to best advantage.

Calanthes Veitchii and lily of the valley, with fern fronds, make a beautiful combination. Small chrysanthemums in their season are much used and are very attractive. Lily of the valley and Richmond, Meteor or General Jacqueminot roses, Roman hyacinths and Salvia splendens make rich and very attractive arrangements. Sweet peas are among the best flowers for table work, when properly blended. Sweet peas and Gypsophila paniculata and fine fern fronds create a grand effect, especially under artificial light.

Roses are most generally used and they are the most popular; in my estimation, the rose is queen, no matter where or how employed. When roses are used for table work they should be arranged with their own foliage and, generally, one variety or color employed. Carnations are very suitable among the best for table or other decoration, and should

be arranged in one or possibly two colors. The most important point is to see that the color of the flowers used harmonizes as nearly as possible with the dishes or other ornaments on the table. Primula obconica, P. chinensis, P. stellata, the many varieties of narcissus, freesias, tulips, poppies, coreopsis, godetia, Helianthus cucumerifolia and multiflora fl. pl., and many other kinds of flowers, are all very useful for table work.

THE USE OF FRUIT

Fruit is used very often as a part of table decorations, and if possible should be displayed on glass dishes, as glass seems to show off fruit better than dishes made of other material. Fruit, as a rule, looks best dressed with its own foliage; but when dishes have to be dressed several hours ahead of time, as necessity very often requires, the leaves generally curl and lose their shape. In this case it would be preferable to employ leaves of a thicker texture, such as those of ivy, laurel, aucuba, bay, and so on, as they will keep longer out of water.

Pineapples should be dressed with their own foliage. Maidenhair fern can be used with strawberries and kept fresh by utilizing small glass tubes filled with water inserted among the fruit. Strawberry plants that have good large ripe

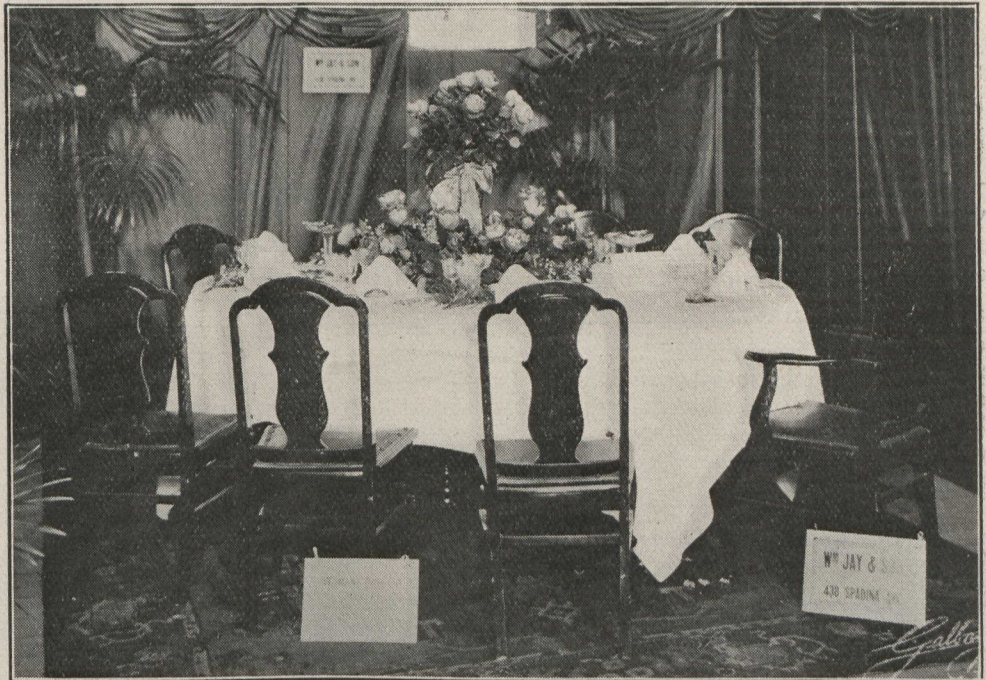
well-arranged centrepiece, and to make every ornament upon the table (whether floral or otherwise) subordinate to the centre one. If the table should be so long as to require three principal pieces, it would be best to use two elegant plants with graceful and finely divided foliage, one at each end; they will set off the central floral arrangement much better than two other floral pieces would.

It is essential that everything on the table should harmonize so that it will please the most critical eye. Strong color contrasts must always be avoided.

Trouble With Azalea

About Christmas last year I purchased a fine plant of azalea. After a short time all the leaves fell off; what, probably, caused it?—R. S., Toronto.

This plant most likely has been allowed to become dry at the root. This, with the dry air of ordinary dwelling houses, spoils these plants. When they have dropped their leaves they are of little use. An azalea in full bloom, that is to be used as a house plant, should be thoroughly watered when received and should be kept well watered and in a cool, light place, where the air is as fresh as possible.—Answered by Thos. Mantion, Eglinton, Ont.



An Artistic Scheme of Table Decoration

fruits hanging, make a very effective centrepiece for the dinner table. The plants can be turned out of the pots and the balls cut down so that several plants can be arranged in one dish.

CENTREPIECES

For a table set for not over 16 persons, it is advisable to have only one large

I have been a subscriber of THE HORTICULTURIST since 1890, and hope to be for a great many years to come. Your magazine has given me much pleasure. I have recently acquired all the back volumes, except two, which, as yet, I have been unable to secure.—Chas. R. Hext, Brantford, Ont.