



## Put a lasting roof on your new barn

We are making Brantford Roofing higher in quality than any other ready roofing. The felt is made to our specifications. It costs us 33-1-3 per cent. more than ordinary felt used in other roofings. But our felt is pure wool, long-fibred, evenly compressed. It wears like iron when saturated with Asphalt—the highest grade of Asphalt. Our Asphaltum is 99 per cent. pure. So called "Trinidad" Asphalt is only about 45 per cent. pure. Do you see why other Asphalt roofings don't wear so long as

Lower grade roofings are often sold at about the same price as Brantford Roofing. You can only make sure of lasting service by making up your mind you must have Brantford Roofing. Then write us. We will see you are supplied.

Get our roofing book and samples. Then choose the styles and weight of Brantford Asphalt, Rubber or Crystal Roofing best suited to your requirements. 23

Brantford Asphalt Roofing?

BRANTFORD ROOFING CO. Limited. Brantford, Canada.

# Brantford Roofing

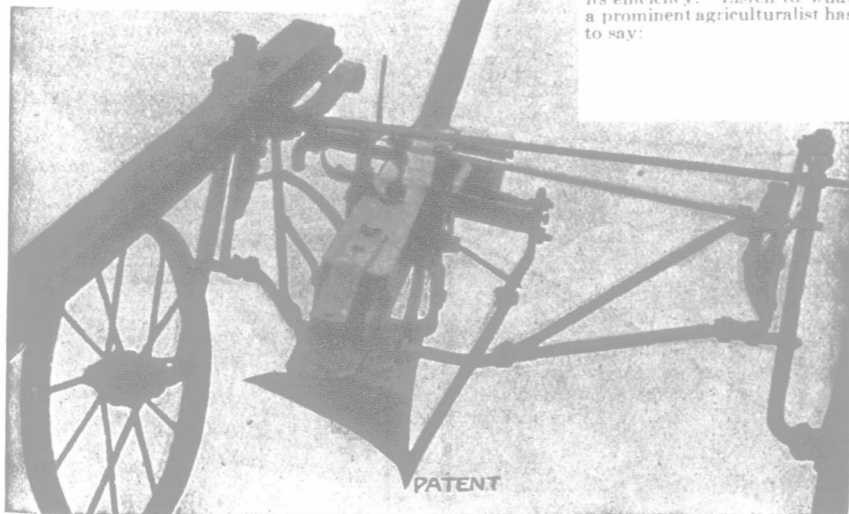
Winnipeg Agents: General Supply Co., of Canada, Limited  
Woods Western Building, Market St. East.

Vancouver Agents: Fleck Bros. Limited, Imperial Building, Seymour Street

## The Van Slyke Breaking Plow

is especially constructed for Western prairie conditions and its merits are commendable. The important points are patented. These include the left hand coulter at an angle of 30 degrees.

the under-cutting shear from the landside and the unique steering device. Numerous practical farmers testify as to its efficiency. Listen to what a prominent agriculturalist has to say:



Dr J. W. Rowntree, President Van Slyke Plow Co., Red Deer, Alta.

Dear Sir:— Referring to demonstration which was given by you of your breaking plow, a few days ago, I noted the following conditions which recommended it to me very strongly.

The undercut share or fin on the landside, which prepared the next furrow for turning, would leave no possibility of any portion of the next furrow being turned without being cut loose from the adjacent sod. There seemed to be very little friction on the share and moldboard, it having so small an angle with the landside and the long sweep of the arms or rods back of the moldboard seemed to turn the sod with perfect ease and little friction, although turning the sod 20 inches in width, and a depth of not less than 4 inches, the draft was so light that it would appear one good team could handle it without very great effort. The coulter set at an angle and attached to the point of the share seemed to be a very good device, as it not only stiffened the coulter and kept it in exact position, but also cut the sod at an angle so it could less easily stand on edge. This assisted turning very much.

Owing to the soil which we have in the irrigation block, I believe you will find it to your advantage instead of cutting a furrow 20 inches in width to cut two furrows 12 inches in width. This will have a tendency to join the edges so as to leave flat the surface and where the sod varies as to its toughness, as it does here, it will turn the sod unbroken and leave a surface best suited for cultivating and would require less discing than it would if turned in wider furrows and not laid as regular.

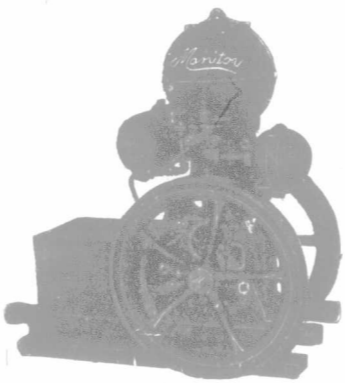
If a few details are worked out I consider you have a plow that will eclipse anything that is now on the market and will work a revolution in breaking sod on this Western prairie. With these few suggestions permit me to say, that any assistance I can give you in working out this point, I will gladly do at any time, and when a plow turning 12-inch furrows, such as can be evolved from the plow shown in the present demonstration, has been made, and is on the market, I want you to put me down for one for use on my farm. I understand that this company are going to make such plows. For scrub brush land an 18-inch furrow plow works better than the narrower furrow.

I remain, Yours very truly, F. W. CRANDELL.

Superintendent of Department of Irrigation and Colonization Dept. Can. Pac. Ry. Others likewise testify, while hundreds are sending in their orders. We guarantee it to work in all brush or gumbo soils.

WRITE FOR FULL PARTICULARS

**THE VAN SLYKE PLOW COMPANY,**  
RED DEER, ALBERTA.



THE *Manitoba*

FROST PROOF

## GASOLINE ENGINES

ARE  
**SIMPLE  
RELIABLE  
ECONOMICAL**

Made right at your door. Repairs or expert advice can always be obtained without delay.

They are sold under a **Positive Guarantee to give Satisfaction.**

Made in sizes, 2, 4 and 7 h.-p., vertical hopper cooled, 10 h.-p. Horizontal hopper cooled, stationary or portable, 25 h.-p. Portable Threshing Engines, and 45 h.-p. Tractors.

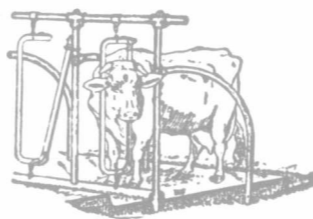
We also manufacture the famous **MANITOBA WINDMILLS**, the strongest, best regulated and most powerful mills on earth, made to suit Western conditions.

Grain Grinders, Steel Saw Frames and Wood and Iron Pumps.

Send for Catalog A. We are manufacturers, not dealers.

**MANITOBA WINDMILL AND PUMP CO. LTD.**  
Box 301 BRANDON, MAN.

## Put "BT" Stanchions and Steel Stalls in Your New Stable



They will make your stable **NEATER, BRIGHTER, MORE SANITARY** and **MUCH HANDIER TO WORK IN** than any other construction you can use. No other tie is as comfortable for the cows as "BT" Swinging Stanchions. No other tie keeps them as well in place in their stalls or as clean, for they cannot move back and forward, but still are left perfectly free to get up or down and to card themselves.

The "BT" Stanchion is made in five sizes and can be used with frame construction if desired. Write for free catalogue, giving full information

and showing how the stable should be laid out.

**Beatty Bros., Fergus, Canada.**

We also build Hay Carrier Goods and Litter Carriers.

## Take care of 10 acres of Kootenay Fruit Land for 5 YEARS and it will take care of you for THE REST OF YOUR LIFE

J. M. Fraser harvested 20 tons of potatoes from a measured acre  
J. T. Bealby picked from three trees this year cherries which actually sold for \$250.

Small orchard tracts of similar character for sale on easy payments. Send for our free illustrated booklet.

**WESTERN CANADA INVESTMENT CO.**

P. O. DRAWER 1042 NELSON, B. C.

\$656,000 SUBSCRIBED CAPITAL \$656,000

CASH DEPOSITS WITH THREE PROVINCIAL GOVERNMENTS

# HAIL INSURANCE

## It is Every Man's Privilege

To carry his own risk and save the insurance premium, but why pay a premium and still carry the risk?

### We Offer

Insurance that has been on trial for **TEN YEARS** in Manitoba and Saskatchewan and it shows an unbroken record of loss claims **PAID IN FULL**, to which thousands of satisfied insurance will bear witness.

### Why Experiment

With something that is on record as having failed whenever put to the test of a bad hail season, or with the **NEW** and **UNTRIED METHODS** of Companies having little or no knowledge of Hail Insurance?

**OURS** is not cheap insurance, but an article that **CAN BE DEPENDENT UPON**, and the price is reasonable.

**The Central Canada Insurance Co.**  
Brandon, Man.

**The Saskatchewan Insurance Co.**  
Regina, Sask.

**The Alberta-Canadian Insurance Co.**  
Edmonton, Alta.

## INSURANCE AGENCIES LIMITED

GENERAL AGENTS

WINNIPEG BRANDON REGINA

LOCAL AGENTS in all districts will be pleased to quote rates and furnish other information.