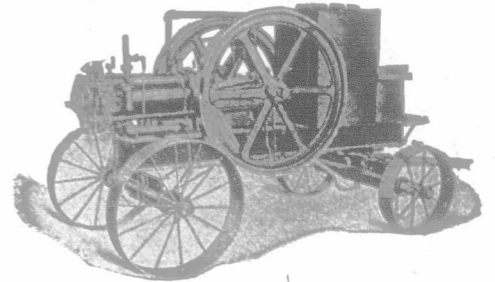


**The OHIO Gasoline Engine**

Portable for threshing and Stationary for cutting wood and chopping.

They are the best engines in the market to-day for general use. Easy to start. We have a large number in use in Manitoba, giving the best of satisfaction. Write for catalogue and prices at once.



**BURRIDGE-COOPER CO., Limited**

152 Henry Ave., Winnipeg.

**Cooks and Bakes perfectly at the same time**

There is not another range built in which the heat may be regulated so that you can bake in the oven and cook on the top at the same time without spoiling one or the other.

But you can do both equally well at the same time on the Pandora, because its heat is not wasted and is at all times under the simplest, most positive control.

If you do the cooking of your household you can appreciate exactly what this means.

**McClary's Pandora Range**

Warehouses and Factories:  
London, Toronto, Montreal,  
Winnipeg, Vancouver,  
St. John, N.B., Hamilton

**HECLA FURNACES ARE FOUND WHEREVER WINTERS ARE COLD**

We also make  
**The Hillborn Wood Furnace**  
**Hot-Water Boiler**  
**Radiator and Register**

**Steel Ranges**  
**Cast Stoves**  
**Cook Stoves**  
and  
**Heaters**

Send for a Booklet Describing the Only Furnace Made with ABSOLUTELY TIGHT JOINTS

**CLARE BROS. & CO., Ltd.** PRESTON & WINNIPEG

**CLARE & BROCKEST,**

Western Agents,

246 Princess Street,

WINNIPEG, MAN.

**TENDERS FOR BINDER TWINE PLANT AND PROPERTY**

Tenders will be received by the undersigned for the following property: The whole plant, including factory, warehouse, machinery and 16 lots. Tenders must be in the hands of the undersigned by 8 p.m., Sept. 25th, 1905.

The property consists of a brick binder twine factory and machinery and plant, with the capacity of three tons of twine per 10 hours, with the necessary spinning and winding machinery. There is also two boilers and an engine of 100 horse-power capacity, a frame warehouse (capacity 1,000 tons), and 16 lots, situated in the centre of the City of Brandon. The plant has most convenient railway facilities for shipping and receiving of goods. This plant is situated in the midst of a great consuming population, which is annually increasing, and the market for the product of this factory is at its doors.

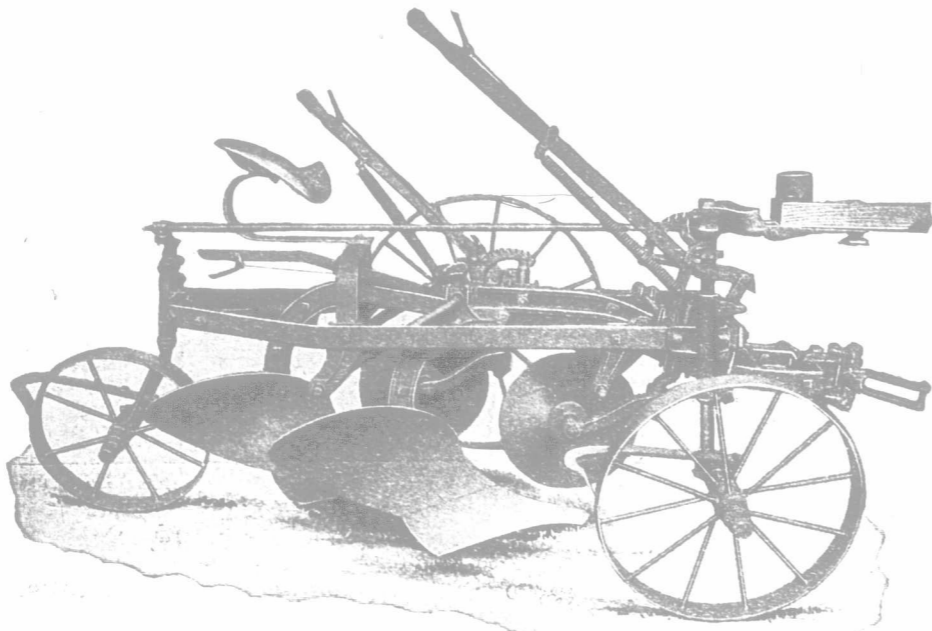
Each tender must be accompanied by an accepted cheque, payable to the Bank of British North America, equal to 10% of the amount tendered, and which will be applied upon the purchase money in case the tender is accepted, or will be forfeited to the Company in case the tender is not accepted and the purchase for any reason is not carried out by the purchaser. Each tenderer must state terms of payment proposed, and any other special terms he desires. Rate of interest will be 6% upon deferred payments.

Tenders will be received for the whole or portions of the property. The highest or any tender not necessarily accepted.

For further particulars, terms and conditions, apply to

The **BRANDON BINDER TWINE CO., Ltd.** P.O. Box 923. Brandon, Man

**NEW PARIS FOOT-LIFT GANG**



Our new **SCOTCH CLIPPER HIGH-LIFT GANG** has foot-lift and release, also hand-release for use when walking. These features have been perfected on our plow, and a small boy can operate easily, whether walking or riding.

Our boards are correct shape, highly-tempered, making a bottom that will clean in any soil.

The superiority of shares, wheels, design, etc., of this plow are described in our folder, which is well worth reading and free for the asking. Write for it.

**The PARIS PLOW COMPANY, Limited,**  
PARIS, CANADA.

Western Agents: The STEWART NELSON CO., Limited, Winnipeg, Man.

Established 1868

Fig. 39

**LIGHTNING WELL MACHINERY,**  
**Rotary, Coring or Rock Drilling,**  
Any Diameter, Any Depth, for  
**Water, Oil, Coal or Mineral**  
**Prospecting,**  
Descriptive Catalog on request.  
**The American Well Works,**  
**Aurora, Illinois, U. S. A.**  
CHICAGO, ILL. DALLAS, TEX.

In answering any advertisement on this page, kindly mention the FARMER'S ADVOCATE.