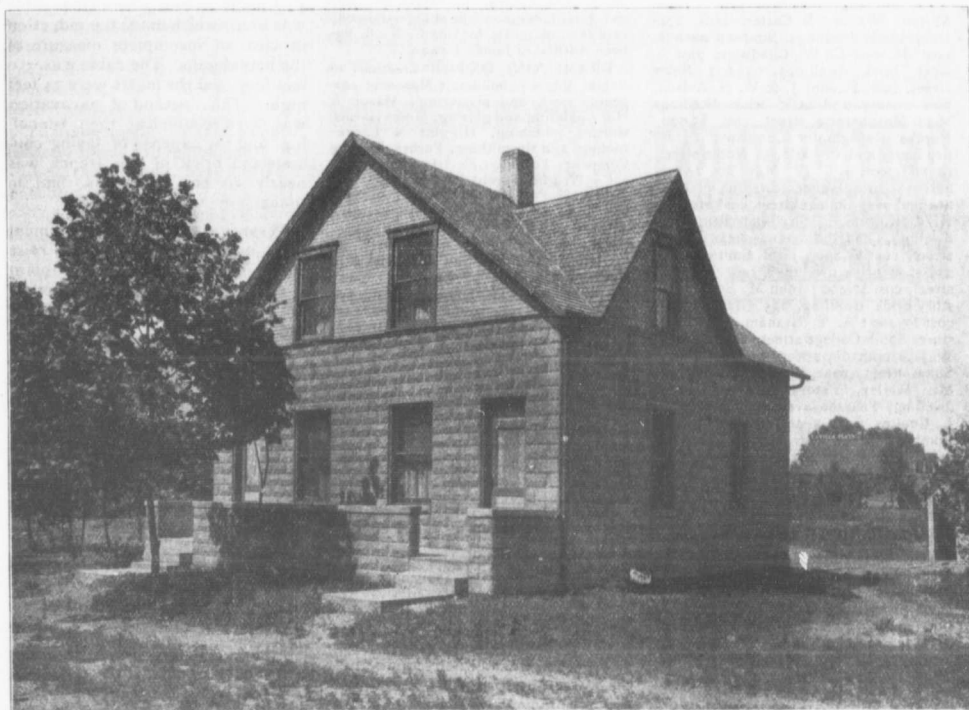


Robt. J. An-
land street,
re Company,
street, \$3,700;
teenth street,
lling, Edmis-
ss, dwelling,
Mason, store,
C. Carrathura,
; A. R. Chis-
er Jasper and

G. Strathy &
ave sold the
street west,
who will erect
se. They have
and 86 Duke
a factory build-
o E. W. Wat-
corner Bloor
a residence,
e street, near
residences will
ders have sold
hich will be re-
Nos. 234 to 238
Nelson street,
123 Manning
reet.—Tenders
ncott street for
ing and carpen-
Toronto Junc-
ol have decided
for roofing St.
plans for the
g King street
by Carrere &
architects and
f building will
rs are wanted at
building three
v will be sub-
s, January 1st,
ction of Yonge
meantime tend-
Board of Control
te at Ashbridge's
er Company for
unches.—C. W.
is purchased the
reet, near Davis-
ends building a
t from \$2,500 to
n sold on St.
Bloor, on which
ie erected.—City
ended the con-
g: Vitrified block
et, from Front to
Cement concrete
n avenue, from
166; Lippincott,
\$3,152; Esther,
\$1,201; Belmont,
ort, \$1,210; Mac-
road to 685 feet
King, from John-
ner, \$1,481; King,
west of Widmer,
thurst to Christie,
Bloor to Barton,
Pape to Leslie,
Danforth to Ho-
from Grange to
nut, from Agnes to
many others.—
s been instructed
el bridge extending
reet.—The officers
rable Children in-
addition to their
138 Avenue road,
ling permits have
s: J. W. Fowler,
c brick dwellings,
Barton avenue, cost
2-story and attic
Huron street, cost
2-story brick dwell-
ost \$2,500; Henry
nd attic brick and
boro avenue, near
R. Johnson, 2½-
Pearson avenue,



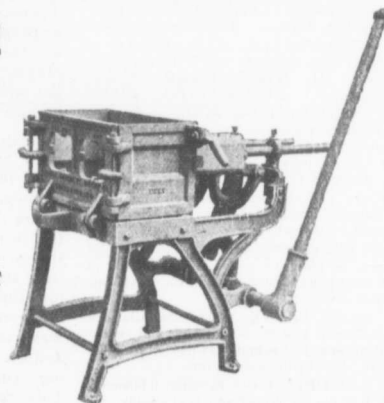
THE IDEAL HOLLOW CONCRETE BLOCK MACHINE

The Favorite of the Block Yard,
Contractor, Builder and Farmer

NO

WHEELS
COGS
CRANKS
CHAINS
SPRINGS

OR COMPLICATED PARTS TO GET OUT
OF ORDER



A FACE DOWN MACHINE

IDEAL BLOCKS can be sold far below the cost of brick, lumber or natural stone. Excel them all in Durability and Fire and Weather Proof Qualities. The same machine makes Blocks in Countless Ornament Designs and Natural Stone Effects.

Write for Catalogues and Prices

W.H.C. MUSSEN & CO.
MONTREAL