

Issued Each Week—Only One Dollar a Year

VOLUME XXVII

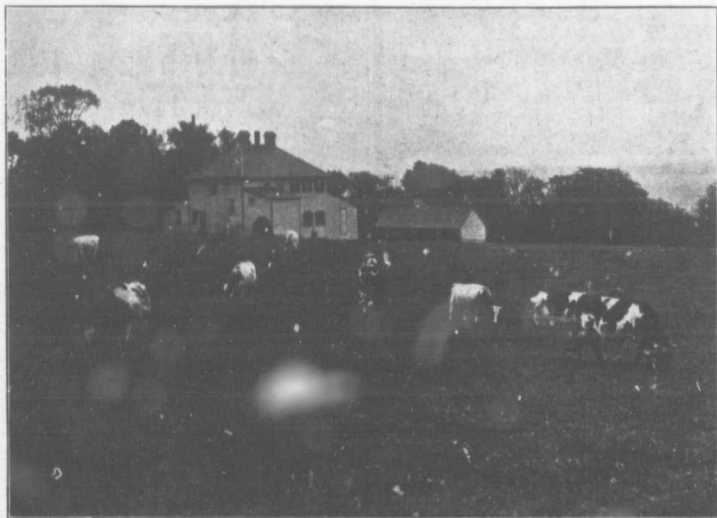
NUMBER 23

The CANADIAN DAIRYMAN AND FARMING WORLD

1908
Dairy & Cold Storage
Commissioner
Agricultural Dept.

PETERBORO, ONT.

JUNE 24, 1908



COMPTON CREAMERY, COMPTON, QUE.—AN IDEAL LOCATION

In the rear of this creamery the maple, elm, ash, beech, and basswood trees border on a gully, 30 to 40 ft. deep. A never failing brook running through the bottom of this gully makes drainage an easy matter. Rooms, over this creamery, in which the butter maker lives, are fitted up with all modern conveniences.

DEVOTED TO
BETTER FARMING AND
CANADIAN COUNTRY LIFE