

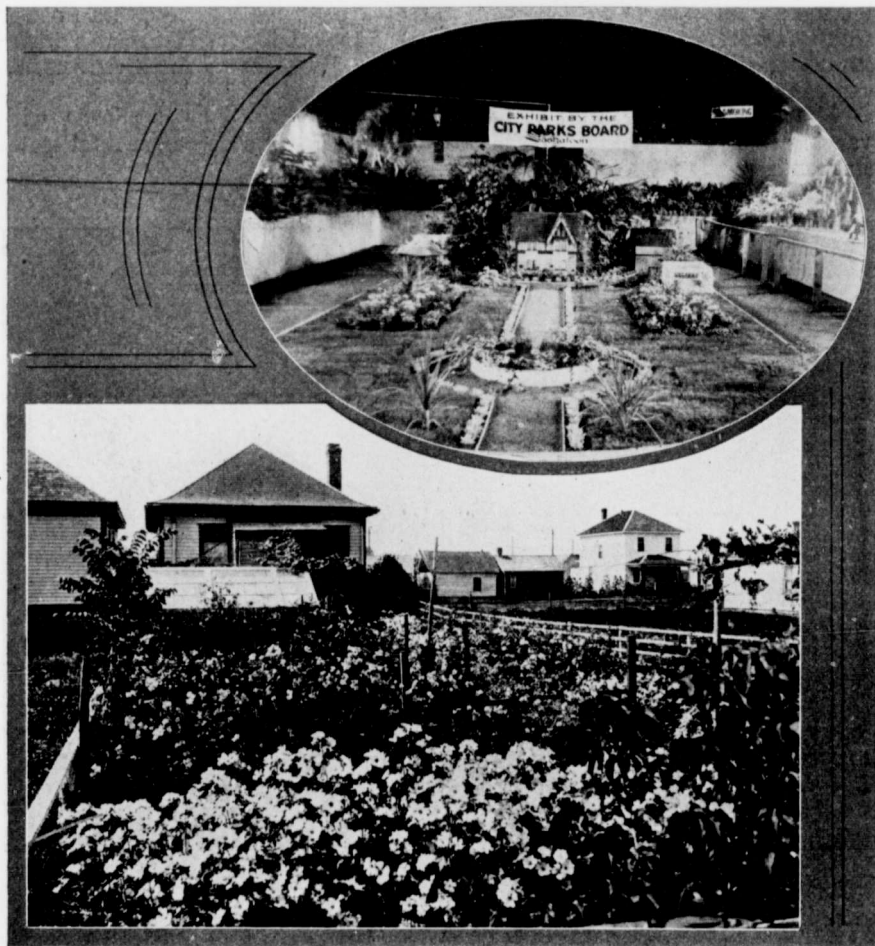
ELECTRIC STREET RAILWAY SYSTEM

The street railway system comprises $16\frac{1}{2}$ miles of track within the city limits, in addition to a suburban line connecting the Town of Sutherland, $3\frac{1}{2}$ miles east of the City. The Sutherland route is operated as part of the regular City service. The present equipment consists of 19 cars, each with a seating capacity of 32, and five cars, each with a seating capacity of 30. The business done is indicated by the following figures:—

Year	Passengers Carried	Gross Revenue	Operating Expenses	Miles Run
1916	3,504,524	\$180,541.60	\$129,156.60	737,475
1917	3,910,101	197,716.57	146,915.05	756,701
1918	3,940,480	200,134.09	214,676.78	755,565
1919	4,978,250	252,047.37	202,467.98	784,818

SASKATOON PUBLIC LIBRARY

In 1911 the City purchased a site for a public library for \$25,000.00. This site is situated on Spadina Crescent and commands a fine view of the Saskat-



What the Amateur Gardener Can Accomplish in Saskatoon