

TUDHOPE Service STARTS when you BUY the "EVERITT" \$1,450

It isn't what you PAY, but what you GET, that makes car value.

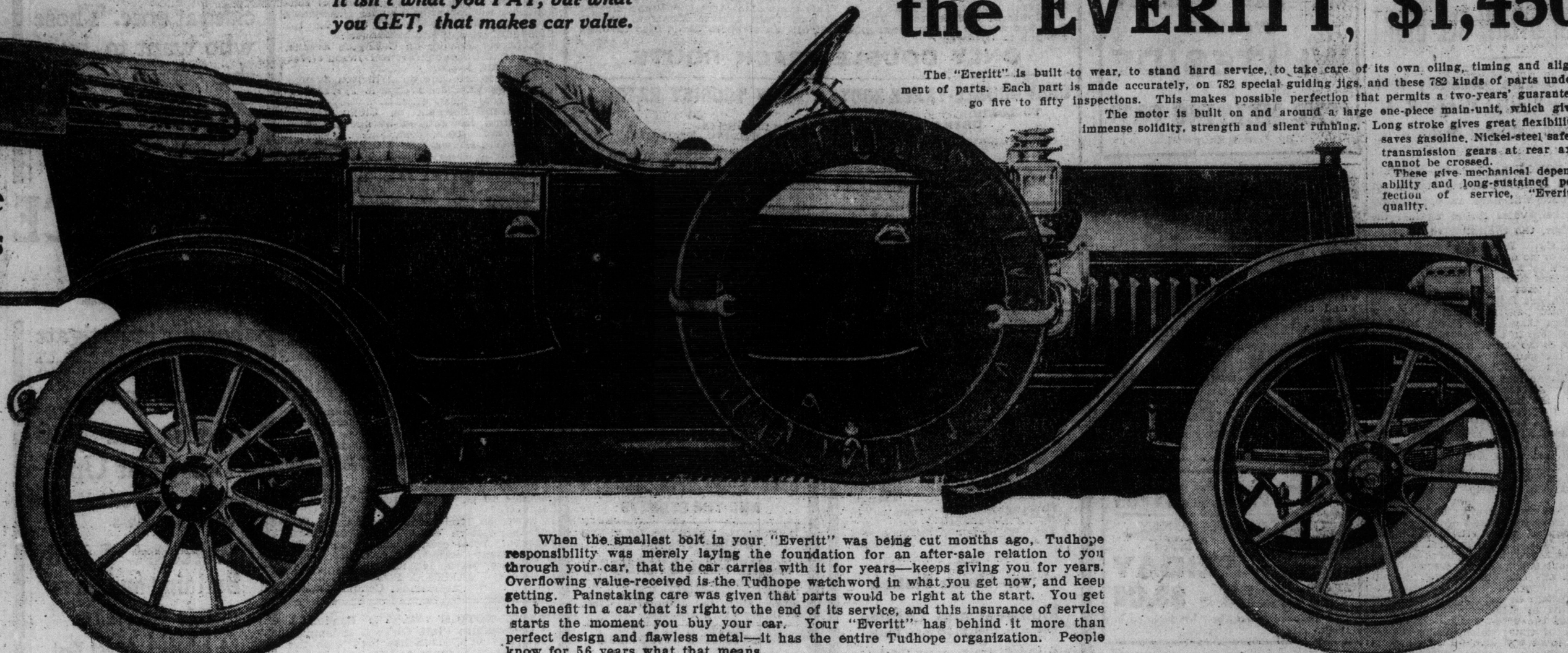
See It at the Armouries

The "Everitt" has double-drop frame, high road clearance, 34-inch wheels, wide seats, low-hung, wide roomy body, on best springs, with shock absorbers.

The "Special Tudhope Equipment" completes each "Everitt" purchase. This includes Bosch high-tension quick-spark magneto, big gas lamps and generator, robe rail, foot rail, eight gasoline gauges.

Extra tire with each "Everitt." Includes holders and cover.

Standard Touring Model, \$1,450. Semi-touring Model, \$1,450. Four-Door Five-Passenger Model, \$1,500 (illustrated). Torpedo Roadster Model, \$1,450. Light Delivery Model, \$1,450.



When the smallest bolt in your "Everitt" was being cut months ago, Tudhope responsibility was merely laying the foundation for an after-sale relation to you through your car, that the car carries with it for years—keeps giving you for years. Overriding value-received is the Tudhope watchword in what you get now, and keep getting. Painstaking care was given that parts would be right at the start. You get the benefit in a car that is right to the end of its service, and this insurance of service starts the moment you buy your car. Your "Everitt" has behind it more than perfect design and flawless metal—it has the entire Tudhope organization. People know for 56 years what that means.

The "Everitt" is built to wear, to stand hard service, to take care of its own oiling, timing and alignment of parts. Each part is made accurately, on 782 special guiding jigs, and these 782 kinds of parts undergo five to fifty inspections. This makes possible perfection that permits a two-year guarantee. The motor is built on and around a large one-piece main-unit, which gives immense solidity, strength and silent running. Long stroke gives great flexibility, saves gasoline. Nickel-steel safety transmission gears at rear axle cannot be crossed. These give mechanical dependability and long-sustained perfection of service, "Everitt" quality.

"Special Tudhope Equipment," Extra Tire, Two Years' Guarantee

Tudhope Motor Sales, Limited, 168 King Street West, Toronto.

Get Catalogue.

Tudhope Motor Company, Limited, Orillia.



Ensign Films Are Faster

And better than any others made. Ensign Films give crisp and clear negatives, with wonderful gradation. Ensigns are non-irradiable, and they fit all film cameras and developing machines. Specify ENSIGNS for the very best results.

United Photo Stores, Limited
15 Adelaide Street East, Toronto
Branches at Quebec, Montreal, Ottawa

A Car of Chivalry

To the man of to-day, the motor car ordinarily appeals as a thing of latent power.

Stored away under its hood and body are the demons of strength and energy to be developed by heat. Turn a crank or press a button, and these break forth with irresistible power, ready to carry him to or from business, or with the swiftness of the wind thru many miles of country fair, far from the maddening marts of trade, to rest and quietness.

Looking over the Toronto Auto Show to-day, the writer has seen many artistic examples of engineers and designers most beautifully executed. But it has remained for one car in

the whole show to link the rushing bustling to-day with the days "When Knighthood was in Flower."

Standing at a corner of the main aisle, near the entrance to the annex, is a coupe body mounted on a "20" chassis, with lines so striking that one pauses, instantly caught with the idea that surely a bit of the 18th century is here and that out of the drifting mists of long dead chivalry, with mincing step will appear "mildly" with her powdered hair, her rouge and black patch, her laces and her turbans, attended by lackeys in wigs, knee breeches and silken hose.

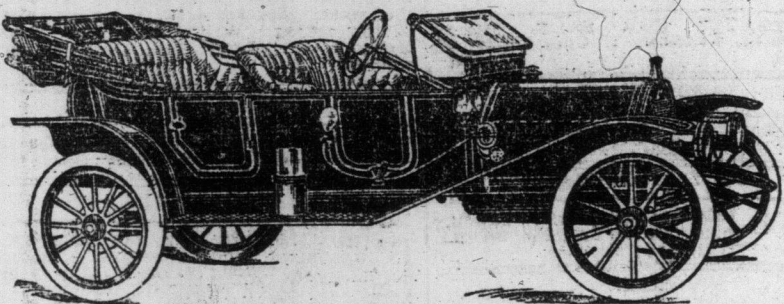
As one watches the crowds with appreciative glances and pleased comment, one must admit that old things are good things, old folks, old wine, old masters, old furniture, even the lines of mildred's old coach as applied to the Abbott-Detroit coupe by its designer are good.



GUARANTEED FOR LIFE

Appeals alike to men to whom price means nothing and men to whom price means a great deal—to men who own several cars and men who require only one good car—to men who are careless about cost of upkeep and men who place cost of upkeep above every other consideration. A car, in short, for which everyone has a good word and no one a word of criticism.

HUPP MOTOR CAR COMPANY, DETROIT, MICHIGAN.



TOURING CAR

\$1250.00, fully equipped, top, wind shield, 3 oil lamps, 2 gas headlights, generator, complete kit tools.

The Automobile and Supply Co. LIMITED
24 Temperance Street
Phone Main 6824 TORONTO

MANY ADMIRERS FOR THE KNIGHT MOTOR

The Automobile Show Has a Drawing Feature in the Engine With the Sliding Sleeves.

In one respect, at least, the Toronto Automobile Show is offering a parallel to the big London show, held at Olympia some months ago, inasmuch as the Knight motor is coming in for the lion's share of attention. To be sure, the display at the armories cannot boast of the presence of Her Majesty the Queen's Knight motor car, but the engine is the same and it is doubtful if even the Queen has a finer car than, for example, the big 38 horsepower Russell limousine with Knight motor, now on display.

In the touring class the Russell "38" with Knight motor, is the admired of all eyes. It is a long, rich-looking car, and the designers have worked out carefully the much-desired low, straightaway effect, which gives great style. The finish is deep wine and the hand-buffed leather upholstery is black. The car carries seven passengers.

The newest Russell model with the Knight motor is the "26." It is called a "younger brother" to the "38." This is shown with a five-passenger touring body. Its rating by the European standard is 26 horsepower. This car, together with a "22" torpedo and a long wheel base roadster of the same horsepower is a strong drawing card. Each is finished in royal blue with black leather upholstery. The 22 horsepower models are said to be the lowest priced Knight engine models of equal power ever brought out.

The interest in the Knight motor will bring to the minds of many the visit to Toronto a year or so ago of the engine's distinguished inventor.

The White Exhibition Complete. As usual, one of the most attractive exhibits at the show is that of the White Company. The exhibit is unique not only from the number of cars shown, but also from the fact that two very distinct lines are presented—the gasoline-driven and the steam-driven. The White Company have been building steam automobiles for so many years that in the minds of the majority of buyers the name "White" almost means a steam motor. It is rather odd, therefore, to note that the great majority of the cars shown by the White Company, Limited, this season, are gasoline-driven.

The White gasoline cars are shown in two models, one a 30 horsepower, and one a 40 horsepower. Both engines have their cylinders cast en bloc, and are of the well-known long-stroke type. The engines are combined with the four forward speeds used in all White cars, make them the most economical cars to operate of their size. The White Company are prepared to show, by the testimonials of their owners, that the average gasoline consumption is 20 miles to the gallon, which for a car as powerful as the White, is remarkably high.

The cars shown at the White exhibit are: Model GA with touring body; Model GA with torpedo body—the latter attracting considerable attention by its color combination of greys; Model GB 7-passenger car, and a polished chassis. In addition, the White Company are also showing two of their three-truck models, those on exhibit being the 1500 pounds delivery wagon, and the three-ton truck. In the steam line they are showing an "MM" steam car, an exact duplicate of the car operated by President Tatt, and known as the Presidential Model.

THE BABCOCK ELECTRIC.

One of the most attractive exhibits of cars at the Automobile Show in the armories is made by the Babcock Electric Vehicle Company of 337 Yonge-st., with their beautiful broughams, and phaetons, etc. This company are Canadian agents for the well and favorably known Babcock Electric. Every night till the show closes, the booth is the centre of attraction, and the half-dozen attendants are quite unable to cope with the crowd, but Mr. F. A. Babcock, president of the Babcock Electric Carriage Company of Buffalo, N.Y., is to come to Toronto in order to meet the many owners of the Babcock cars in this city. His presence will add much prestige to the already attractive spot. Mr. Babcock is rightly called the "King of the Electric Vehicle World," his long experience in the construction of electric cars entitling him to the above-named title. While the exterior of the Babcock cars is without doubt most beautifully finished, yet the salesman of this car does not dwell on those points of interest, but rather he calls attention to the interior of the car, the all-important part, the perfect mechanism, etc. Like a watch, the inner mechanism of the automobile is what counts most in the sale of cars in this "show-me" age.

AGENTS EAGER FOR EVERITT.

One of the best tests of the popularity of a car is the rapidity with which its agencies are taken up by discerning motor car dealers throughout the country. Mr. Fred Inwood, manager Tudhope Motor Sales, Limited, Toronto, says that reports from headquarters of his company at Orillia indicate that the "Everitt" will speedily be represented in every clime, or any importance throughout the Dominion. The factory daily receives applications for agencies and with them expressions of gratification and surprise that a car of the remarkable value of the Canadian built "Everitt" is now on the market.

Found Dead in Bed.

Patrick Cruise, 3 St. Clarens-ave., was found dead in his bed yesterday morning by his wife when she went to arouse him. Coroner J. H. McConnell is investigating, but an inquest is unlikely.

You Can Cure Chest Colds

And Bronchitis by Using DR. CHASE'S SYRUP OF LINSEED AND TURPENTINE if You Get the Genuine.

The mere mention of pneumonia and consumption causes a person to shudder, but a cold is such a common thing that it is too often left alone until these other ailments develop from it.

You can readily cure throat and chest colds, croup and bronchitis by using Dr. Chase's Syrup of Linseed and Turpentine. This medicine is both thorough and far-reaching in its influence on the system. For this reason its merits are well-known and its sales enormous.

But there are at least four imitations of Dr. Chase's Syrup of Linseed and Turpentine. And imitations are always a little cheaper, how else would they sell? They are clever sold on their own merit, but on the merit of the article they imitate.

Their likeness is in name only, and when you are in need of medicine you don't want to depend on a name or imitation. Every bottle of the genuine bears the portrait and signature of Dr. W. Chase, M.D., the famous Receipt Book author. 25 cents a bottle, family size 60 cents; all dealers, or Edmondson, Bates & Co., Toronto.

CITY'S BILL MAKES HEADWAY

Power Given to Borrow Funds for New Registry Office.

Toronto's bill was before the private bills committee of the legislature yesterday morning and several of the clauses were favorably passed on. Mayor Gear, H. L. Drayton, corporation counsel; William Littlejohn, city clerk, and R. C. Harris, property commissioner, represented the city. Messrs. Gooderham, McNaught, McPherson and Shaw were the city members present.

The clauses authorizing the city to borrow funds for the building of a new registry office, and validating the agree-

ment between the city and the Art Museum in regard to the maintenance of the Grange, carried without discussion, and that to enable the city provided it secured power to appoint a harbor commission to deal with waterfront properties to that commission's reciprocity policy. I do not feel it would be consistent for me to attend your meeting to-night, more especially as I intend in future to support the Liberal-Conservative party. Herewith I enclose the certificate you sent me.

Subject to any suggestions by the provincial secretary, the committee passed the clause authorizing the city to expropriate land outside the city for an industrial farm.

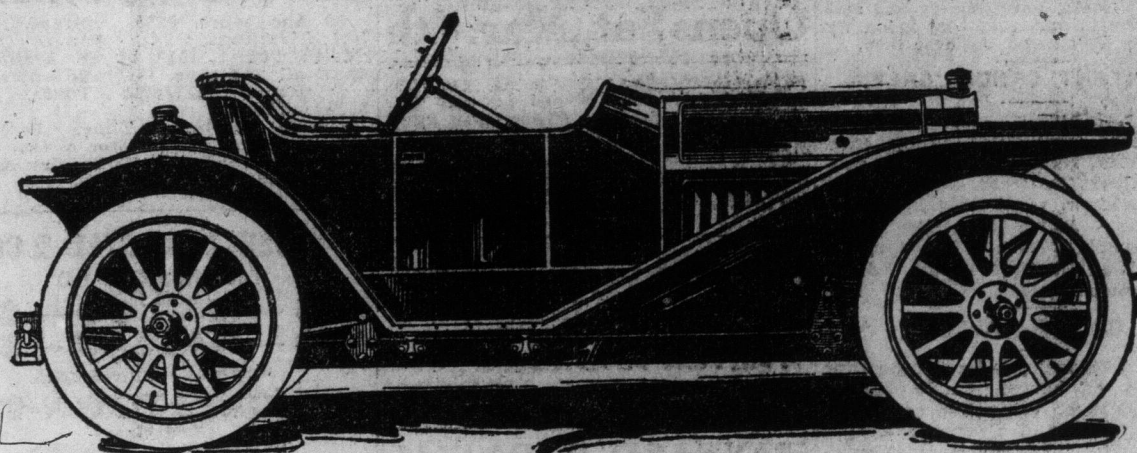
The power to sell hay and fodder at the cattle market, to use St. Patrick's market for civic purposes, to acquire that part of the Toronto and York Radial in Etobicoke, and the clauses relating to the confirmation of certain bylaws, were left over for future consideration.

STILL THEY COME.

Dr. J. B. Richardson, a prominent Liberal, was absent from the big meeting on Monday night, sending the following note in explanation: "As I am unalterably opposed to the government's reciprocity policy, I do not feel it would be consistent for me to attend your meeting to-night, more especially as I intend in future to support the Liberal-Conservative party. Herewith I enclose the certificate you sent me."

G. T. R.'s Phone System. The Grand Trunk have installed their new telephone system at the Union Station. The plant has been transferred to the upper storey of the building. There will be a staff of five girls employed, three of whom will be on duty during the busy hours.

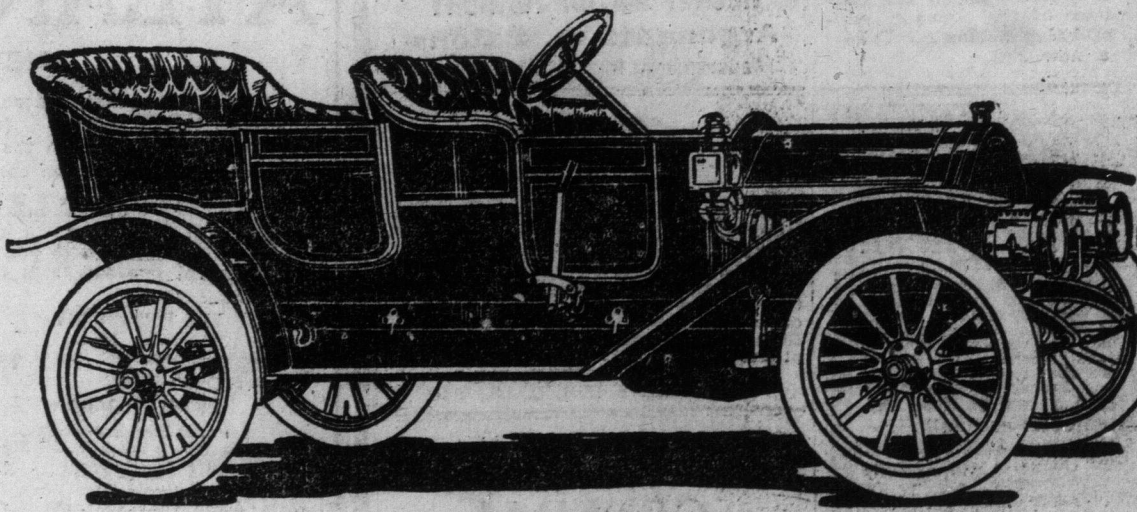
1911 - REGAL - 1911



REGAL "20"

"Some Class to This"

The Regal 20 Roadster was the sensation of the New York and Chicago shows, where Roadsters of every description were shown. There is nothing on the market for 1911 that approaches it. Get a demonstration and be convinced.



REGAL "30"

This Regal 30 Model is already well known. More power, Fore Door body and small refinements being only changes for 1911. Will be exhibited at the Auto Show by

Ross Motor Car Company, Limited
132-134 Simcoe Street, TORONTO

Phone Main 1968