

THE J. C. McLAREN BELTING COMPANY.

The following is the substance of a very neat folder addressed "To the Management of Electric Light and Power Stations," and distributed to the attendants at the recent convention of the Canadian Electrical Association at Montreal:

It is very gratifying to us to be able to say that we have handled the largest individual order for belting an electric plant that has so far been placed in Canada.

Doubtless you will be visiting our city shortly, when the annual convention of the Canadian Electrical Association will be in session this month.

In all probability amongst other points of interest that will be visited will be the generating station of the Montreal Street Railway system, acknowledged by all to be the best equipped on this continent, and in this connection we beg to draw your attention to the belting transmitting the 7,000 h.p.

Our contract for this work covered the maintenance of these belts for two years from their starting up. It will surprise you to learn that the total expense to us in this connection did not amount to $1\frac{1}{2}$ per cent. of the total value of the purchase.

These belts are all made from genuine English oak-

tanned stock, a tannage that has properties especially adapted for the exacting work peculiar to electric plant.

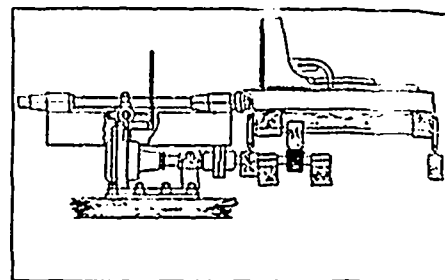
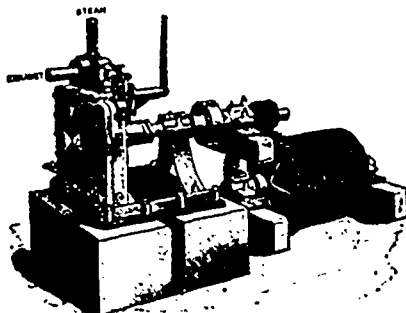
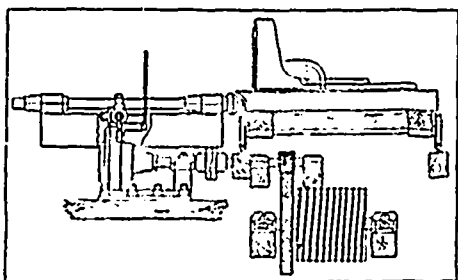
So that you may better appreciate the magnitude of this contract, we give below a memo covering the number of hides and total weight of the leather, also a memo of the lengths and widths that comprised the various drives, consisting as you will note of twelve twenty-four inch double, and three fifty-four inch three ply belts.

Number of hides, 1,630; total weight of leather, 15,000 lbs.

One belt, 140 feet long, 54 inches wide, 3 ply.	
" 138 " 54 " "	
" 132 " 54 " "	
" 128 " 24 " 2 ply.	
" 143 " 24 " "	
" 135 " 24 " "	
" 147 " 24 " "	
" 125 $\frac{1}{2}$ " 24 " "	
" 122 " 24 " "	
" 138 $\frac{1}{2}$ " 24 " "	
" 125 " 24 " "	
" 136 " 24 " "	
" 178 " 24 " "	
" 136 " 24 " "	
" 124 " 24 " "	

In the saw mills of Canada many different methods are employed for doing similar work, each one, perhaps, possessing certain points of merit. Superintendents, sawyers, filers, etc., are respectfully asked to contribute to our journal their views as to the best method of doing certain mechanical work, such as lining and setting up shafting, setting up rotary and other circular saws, rules for finding out and marking off the shape of circular saw teeth for guidance in grinding and filing.

Steam pipes and wood in close contact make a combination from which fire is always liable to result. No doubt a great many dry kiln fires start from this cause. A. L. Artz, inspector for the Lumber Mutual Fire Insurance Co., of Boston, Mass., thinks the steam pipes in a dry kiln should be overhead and the ventilators below. To quote his words: "However, if steam pipes are beneath stock, and it is thought they can not well be changed, they should at least be six inches above the floor, and have the slatted floor above them made in small sections, so that it can be easily taken up and refused swept out frequently. It will pay in the effectiveness of operation. Steam pipes covered with dirt, dust and sticks will self-evidently not give near as much heat as clean pipes, nor will they be cleaned unless arranged so as to be cleaned easily."



The **DAKE** STEAM FEED

Embodies the following Advantages:
SIMPLICITY OF CONSTRUCTION,
POSITIVE AND EASY MANAGEMENT,
ECONOMICAL USE OF STEAM,
SMALL SPACE OCCUPIED, CHEAPNESS,
EASY ADAPTATION TO EITHER NEW
MILLS OR THOSE NOW IN USE.

THE JENGKES MACHINE CO. - Sherbrooke Que.
Succeeding the PHELPS MACHINE CO., EASTMAN, QUE.

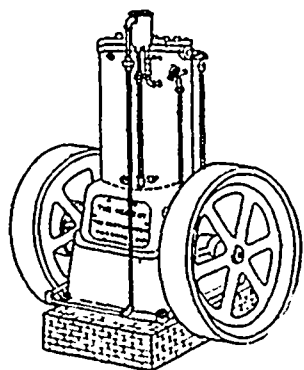
The movement of the engine in either direction is under the absolute control of the sawyer, thus accommodating the speed of the feed to the size of the logs.

Mill men who have used other makes of Steam Feeds comment favorably on the economical use of steam of feed over others.

Write for Catalogue and full particulars.

Northey Gas and Gasoline Engine

Safe Powerful Economical



"Built for Hard Work."

Can be used to advantage for Lath and Stave Mills, Shingle and Deal Machinery, Portable Saw Mills, Barking or Pulping Machinery.

Our Booklet tells all about it. Write for it.



Pumps "FOR ALL DUTIES"

**Simple Strong
Durable**

**Single and Duplex Types
Steam and Power**

Write for Catalogues.

Northey Mfg. Co., Ltd.
1016 King Street Subway, Toronto.

TO BELT USERS:

Try Our **GENUINE**

ENGLISH OAK-TANNED BELTING

and Our **Lancashire Hair Belting**

D. K. McLAREN

Victoria Square, MONTREAL