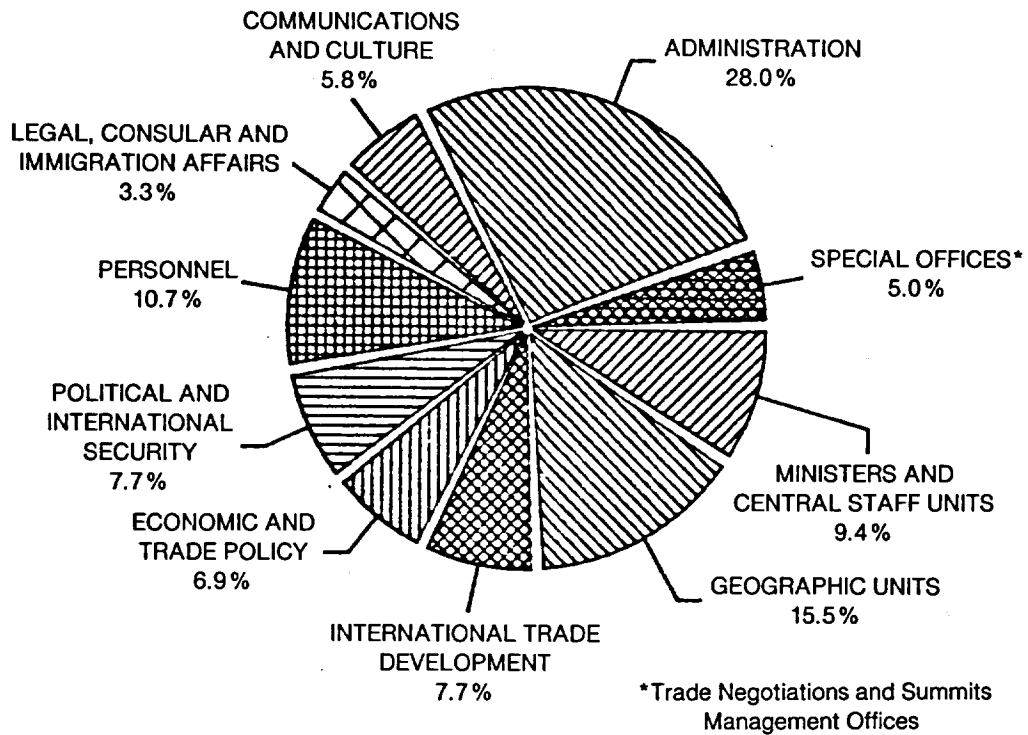


PERCENTAGE DISTRIBUTION OF PERSONNEL AT HEADQUARTERS AND CANADIAN MISSIONS ABROAD

HEADQUARTERS BY ORGANIZATIONAL ACTIVITY (Canada-based)



ABROAD AND HEADQUARTERS BY REGION (Canada-based and locally-engaged)

