

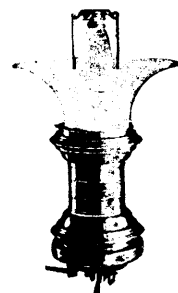
Outdoor
Direct
Current.

C. G. E. ARC LAMPS

The time for artificial lighting is at hand. Let us solve the problem for you. Here are two types. We have many others for

FACTORIES, MILLS, WAREHOUSES, STORES, OUTDOOR LIGHTING, ETC.

Alternating or Direct Current. Series or Multiple.

Indoor Alternating
Current.

Canadian General Electric Company, Limited

Head Office, TORONTO, ONT.

BRANCH OFFICES — Montreal.

Halifax.

Ottawa.

Winnipeg.

Vancouver.

Rossland.

EUGENE F. PHILLIPS ELECTRICAL WORKS

MONTREAL - CANADA - TORONTO

LIMITED

Bare and Insulated Electric Wire

Electric Light Line Wire, Incandescent and Flexible Cords,

Railway Feeder and Trolley Wire

Americanite, Magnet, Office and Annunciator Wires,
Cables for Aerial and Underground Use.

LONG DISTANCE PHONE 1108.

The Electrical Construction Company of London, Limited

32-40 Dundas St., London, Can.

Perfection
TYPE

DYNAMOS and MOTORS

Multipolar or Bipolar, Direct-Connected or Belted.

OVER 1500 OF OUR MACHINES
IN USE.

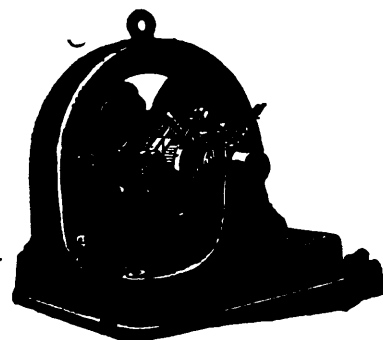
We contract for complete installations, in-
cluding wiring of factories.

We repair machines of any make.

Descriptive matter and estimates furnished on application.

Branches at Vancouver, Winnipeg, Toronto, Montreal, Halifax

TORONTO and HAMILTON ELECTRIC CO.



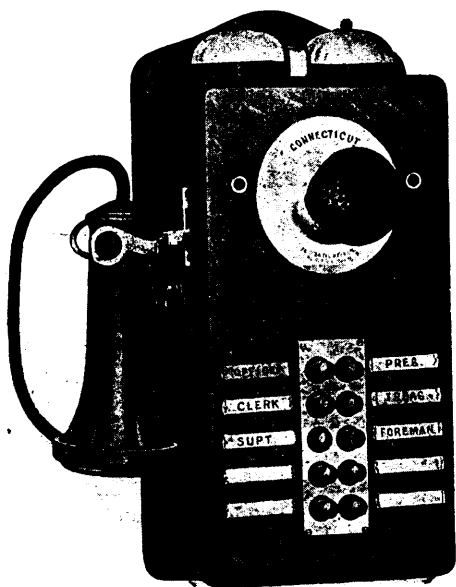
MOTORS and DYNAMOS

MODERATE and SLOW SPEED OF HIGH EFFICIENCY.
EITHER BELTED OR FOR DIRECT CONNECTION.
REPAIRS PROMPTLY EXECUTED ON ALL
ELECTRICAL APPARATUS.

T. & H. ELECTRIC CO.

99-103 McNAB N., - HAMILTON, ONT.

TELEPHONES OF EVERY DESCRIPTION



Telephone and Line
Supplies

JOHN FORMAN

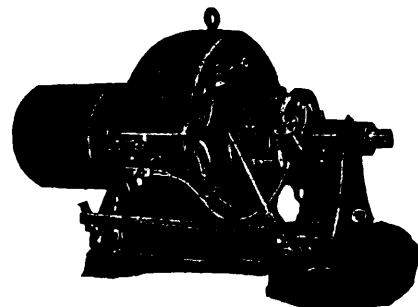
708 and 710 CRAIG ST.

MONTREAL, QUE.

The Jones & Moore

ELECTRIC CO., Limited

ELECTRICAL CONTRACTORS



DYNAMOS, TELEPHONES, SLOW
SPEED MOTORS, MOTORS, SUPPLIES,
DIRECT CONNECTED DYNAMOS.

We manufacture Direct Current Machinery in
all sizes and for any purpose.

196 ADELAIDE WEST,
TORONTO.