

AMERICAN PATENTS.

The following is a list of patents recently granted in the United States to Canadians. This list is specially furnished to THE CANADIAN ENGINEER by H. B. Willson & Co., Washington, D.C.—

- Jared H. Beamer, assignor of one-half to W. P. Ryan, Brampton, Ont., machine for cleaning and polishing fruit.
 Edward E. Horton, Toronto, tire.
 Charles J. Stuart, Montreal, projectile.
 Henry M. Childs, Montreal, egg case.
 Thomas Harold, assignor of one-half to J. McColl, Vancouver, B.C., adjustable panel mitre-box.
 Charles L. Higgins, Montreal, footwear.
 Samuel Hughes, Lindsay, Ont., heating and ventilating railway carriages.
 James T. McCabe, Toronto, assignor to McCabe Manufacturing Co., support for travelling hangers for step-ladders.
 James T. McCabe, Toronto, assignor to McCabe Manufacturing Co., door hanger.
 Walter Rowlands, Montreal, railway switch stand.
 Joseph A. G. Trudeau, Ottawa, electric current transformer.
 Oliver W. Ketcham, Toronto, hydraulic press.
 Nelson Lampman, Woodstock, brake for railway cars.
 Michael J. Moran, St. John, N.B., chimney cowl or ventilator.
 Thomas Parker, assignor of three-fourths to J. D. Wright and A. M. Colquhoun, Toronto, brick press.
 Robert D. Robbins, Port Perry, Ont., assignor, lawn mower.
 Robert S. Anderson, Toronto, pneumatic tire for bicycles.
 Alexander Barhite, Toronto, assignor, road-grading machines.
 Edmond H. Casgrain, Quebec, apparatus for casting metals.
 Edmond H. Casgrain, Quebec, vulcanizer.
 Thomas C. Edwards, Chatham, sad-iron.
 George W. Green, Kingsville, assignor, bed-brace.
 Wm. B. Hamilton, Toronto, printing form.
 Newman H. Holland, Montreal, automatic telephone-switch.
 Stephen S. Kimball, Montreal, street-car fender.
 Samuel Knighton, assignor of one-half to C. E. Kavanagh, Winnipeg, band-tie.
 William Kyle, Brockville, Ont., torsion-spring gear for vehicles.
 John R. Meadowcroft, Montreal, valve.
 John Velie, Winnipeg, cooking utensil.

- Alexander Barhite, Toronto, excavator.
 John W. Hallman, Toronto, assignor, composition for melting snow.
 William H. Emerson, assignor of one-half to M. Campbell, Chatham, elevator-cup attachment.
 John D. Howe, St. John, N.B., chair.
 Reuben T. Morehouse, Sandy Cove, N.S., assignor of one-half, instrument for obtaining altitudes at sea.

RECENT GERMAN PATENTS.

- Compiled at the Patent and Technical Office of Brockhues & Co., Cologne. Information on all questions referring to this list is given gratis to subscribers of THE CANADIAN ENGINEER.
 Otto Hentschel, Gümna, in S., machine for washing, steeping and germinating grain.
 Dr. Friedr. Hoffmann, Berlin, artificial fuel.
 Heinrich Hüttenrauch, Linden, Hanover, switch with automatic motion for an alternating direction of cars for tramways.
 Rud. Lamarche, Hamburg, apparatus for automatic disinfection of the mouthpiece of telephones.
 F. G. Berg, Düsseldorf, gas stove with storage of heat.
 C. Weiss, Hanover, pliable wooden wall.
 Gust. Martens, Geestemünde, seine, with arrangements for allowing the smaller fish to escape.
 F. Schotte, Berlin, process for making iron alloys.
 Friedr. Siemens, Dresden, safety cock for gas-heating stoves.
 Noe Berlin, jr., Cologne, cylinder caps, influenced by the gas cock, for incandescent gas lamps.

LEVIATHAN BELTS

Main Driving, Dynamo
 Beating Engine
 Rolling Mill
 Saw Mill
 Paper Mill, etc., etc.

Under ordinary conditions, or where exposed to heat, cold or moisture, will give the longest and best service.

Write for
 Price List and
 Discounts.
 It will pay you.

BROWNE MFG. CO.
 Selling Agents for the Dominion
 207 St. James Street, MONTREAL



ALLAN FOUNDRY AND MACHINE WORKS

(FORMERLY ALLAN BROTHERS)

CARLETON, ST. JOHN, N.B.

Saw and Grist Mill Machinery, Patent Lath Machines, Rotary Feed Gears, Soil Pipe and Fittings, Iron and Steel Shafting, Hangers, Pulleys, Gears, Stone Cutting and Polishing Machinery, Architectural Iron Work, Bridge, Railroad and Ship Castings, Ships' Windlasses, Capstans, Pumps, Caboose, and Castings of every description, Ships' Yellow Metal Castings, Brass Work, Belts, etc., etc.

MARINE and STATIONARY
 ENGINES

WALTER H. ALLAN, Manager.

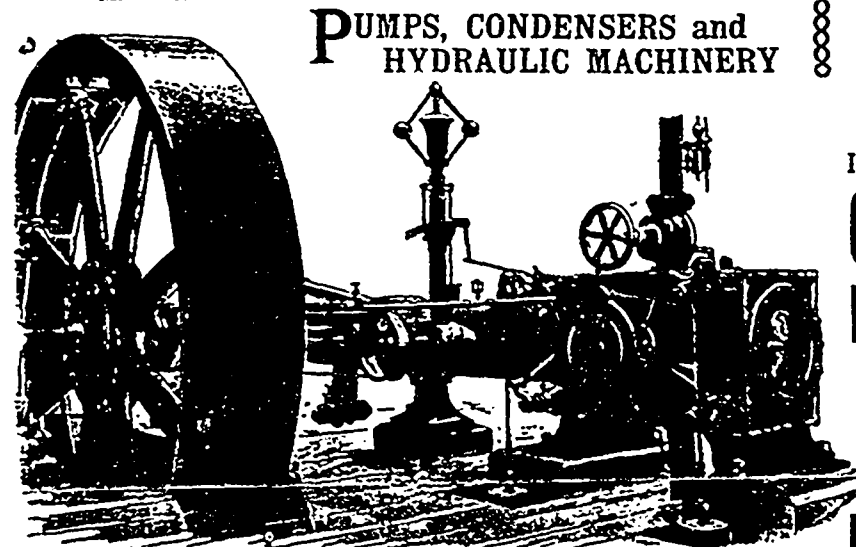
LAURIE ENGINE CO. St. Catherine Street East MONTREAL

Solo Agents in Province of Quebec

NORTHEY CO., Ltd.

Manufacturers of all kinds of

ENGINEERS and CONTRACTORS



PUMPS, CONDENSERS and
 HYDRAULIC MACHINERY

COMPLETE
 MOTIVE
 PLANTS, etc.

IMPROVED

**CORLISS
 ENGINES**

High-Pressure, Condensing
 and Compound

Feed-Water Heaters
 and Purifiers

HEAVY FLY-WHEELS a Specialty

