

80-A

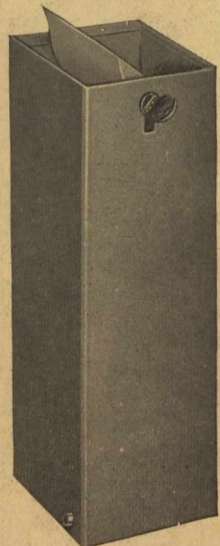
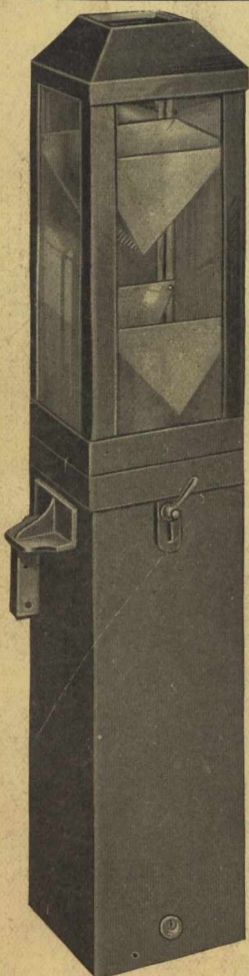
# Canadian Railway AND Marine World

ESTABLISHED 1898.

Number 213

TORONTO, CANADA, NOVEMBER, 1915

Subscription Rates, Page 433



## No. 4 Type Coleman Fare Box

Our new number 4 type stationary fare box will appeal to electric railway officials for all P. A. Y. E. operating conditions.

Being but five inches square it occupies a minimum amount of space on the car platform and is especially suitable where platform space is limited and also for one man operation.

It is suspended by two brackets to the car railing and the cash box telescopes into the outside casing.

There is only one working part to the box so that there is nothing to get out of order and this feature also insures low maintenance.

Should a glass become broken or should it be desired to clean the glasses this can be accomplished in a few minutes by a very simple means.

When you are considering purchasing fare boxes investigate this number 4 fare box carefully, it will save you money both in first cost and subsequent maintenance.

## Coleman Fare Box Co., Ltd.

*Manufacturers of Portable and Stationary Fare Boxes*

**Works :**  
Tottenham, Ont.

**Head Office :**  
70 Bond St., Toronto