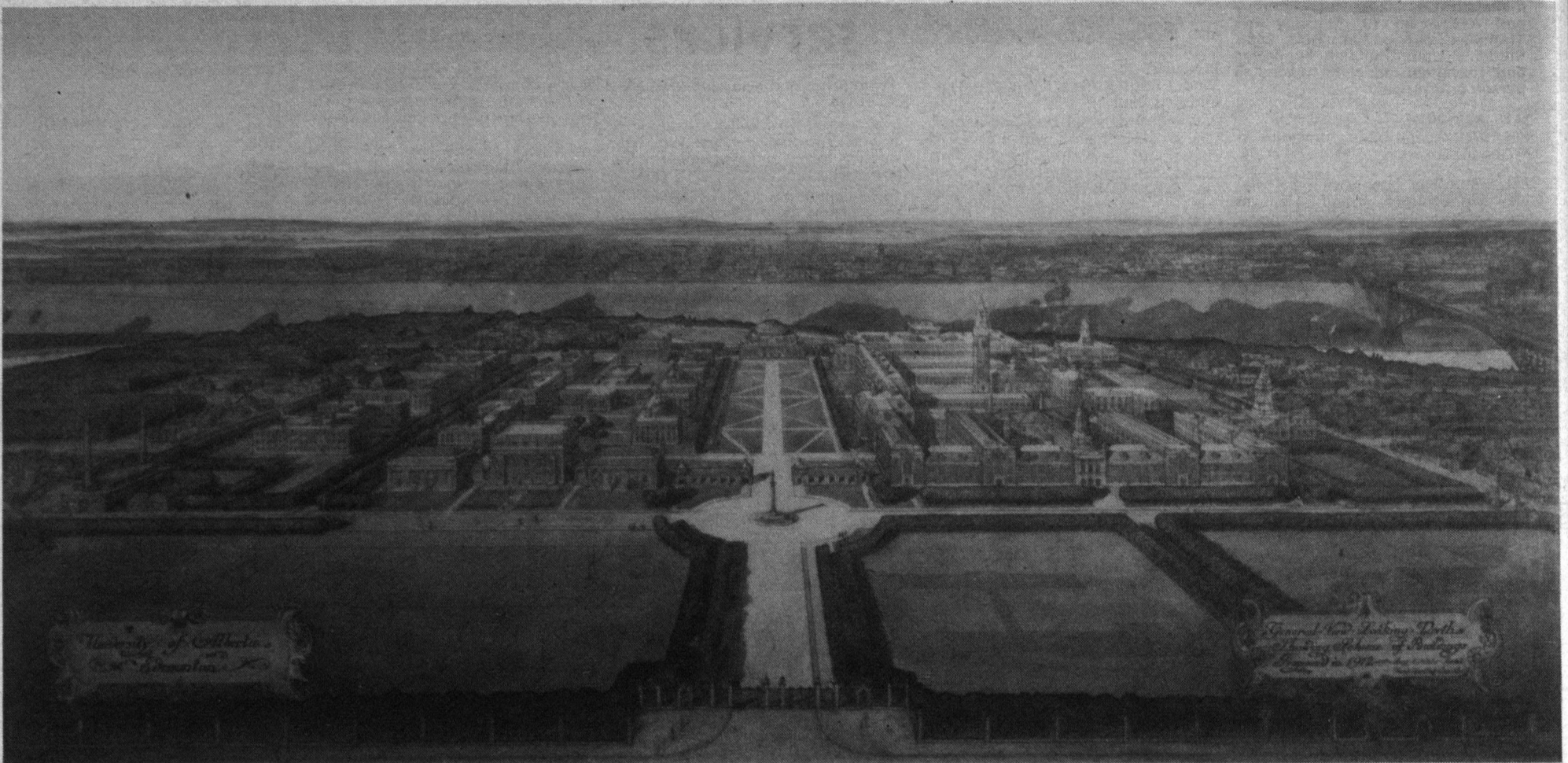




75th Anniversary 1908 - 1983



1912-a long range plan for campus



This plan, drawn up in 1912, shows what the university was supposed to look like for the future.

When the buildings went up for real

Administration Building occupied August, 1957
 opened November 1, 1957
Agriculture-Biology Building Agriculture opened October 29, 1954
 Biology opened October 30, 1958
Armed Services Building opened March 21, 1964
Arts Building opened October 6, 1915
 completed September 10, 1915
Assiniboia Hall partial occupancy October 1, 1912
 full occupancy January 1913
Athabasca Dining Hall & Gymnasium opened autumn, 1913
Athabasca Hall opened September, 1911

Cameron Library opened May 28, 1964
Corbett Hall occupied September, 1929
Education Building opened May 30, 1963
Engineering Building opened October 30, 1953
Engineering Centre - Phase 1 opened February 21, 1969
Gas House (later Horticulture, Department of) became part of **Power Plant No. 1** opened autumn, 1911 by Mansfield & Sons, Liverpool, England
General Services Building opened November 15, 1968
Greenhouse and Headhouse under construction December, 1954

discussed equipment to go into headouse October 8
Henry Marshall Tory Building opened November 18, 1966
Jubilee Physical Education Building opened October 29, 1958
Lister Hall opened November 6, 1964
Medical Sciences Building between March and November - likely September - 1921
 cornerstone laid September 24, 1920
Michener Park opened November 6, 1967
North Lab plans laid in March, 1919
 likely completed October, 1919
Pembina Hall opened October, 1914
Physical Education Building opened May 17, 1960

Physical Sciences Centre opened May 24, 1961

Power Plant opened autumn 1915
Power Plant No. 1 (rear of Athabasca Hall) opened 1913

Rutherford Library opened May 15, 1951
South Lab opened summer, 1915

Students' Union Building (new) opened October 6, 1967

University Hall (old SUB) opened September 28, 1950
University Hospital opened February, 1914



This house had to make way for the 'new' Students' Union Building, or just SUB. A bulldozer, pushing from the left, topples the structure. That's progress, right? Now we have the existing structure of SUB in all its splendor, and aren't we much happier for it?