



The Finest Fishing Resorts in America

Are located in "The Highlands of Ontario," Canada, and are reached by

The Grand Trunk Railway System
THE DOUBLE-TRACK TOURIST ROUTE

The Kind You Catch and Where They are Caught

LAKE OF BAYS—Speckled Trout, Salmon Trout and Black Bass.
ALGONQUIN PARK—Speckled Trout, Black Bass and Salmon Trout.
TEMAGAMI—Black Bass, Lake Trout, Speckled Trout, Wall-eyed Pike.
LAKE NIPISSING—Black Bass, Maskinonge, Pickerel, Pike.
GEORGIAN BAY—Black Bass, Salmon Trout, Lake Trout, Pickerel, Pike.

OPEN SEASONS

BLACK BASS—June 16 to April 14 following year
SALMON TROUT and LAKE TROUT—Dec. 1 to Oct. 31 following year.
SPECKLED TROUT—May 1 to September 14
MASKINONGE—June 16 to April 14 following year
PICKEREL—May 16 to April 14 following year

Handsome descriptive literature relative to any of these districts sent on application to
J. D. McDONALD, Union Station, Toronto, Ontario
J. QUINLAN, Bonaventure Station, Montreal, Quebec
W. E. DAVIS, Pass. Traffic Mgr., Montreal
GEO. W. VAUX, Genl. Pass. Agent, Montreal
G. T. BELL, Asst. Pass. Traffic Mgr., Montreal

\$41⁰⁵ *Vancouver*
Victoria
Seattle
Tacoma
Portland

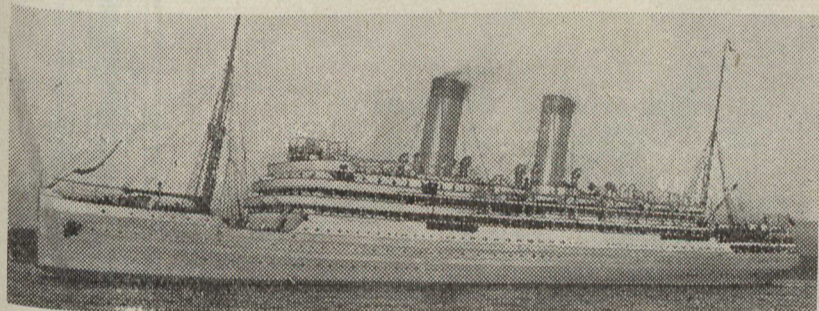


TICKETS on Sale Daily
UNTIL APRIL 15th.

The Through Line
TO THE WEST

Through train Toronto to Winnipeg and Western Canada daily consisting of first and second class coaches, diner, colonist, tourist and palace sleepers.

Canadian Northern Steamships Limited



THE ROYAL LINE

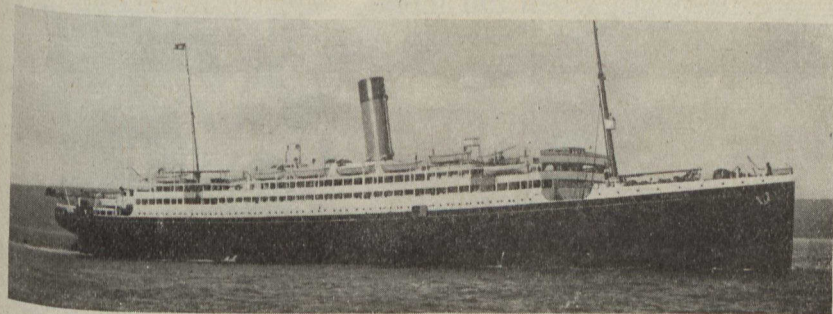
TRIPLE SCREW - - - - - ROYAL EDWARD
TURBINE STEAMERS - - - - - ROYAL GEORGE

The New Fast Route between MONTREAL, QUEBEC and BRISTOL

Tickets and full information on application to any steamship agent or

H. C. BOURLIER,
General Agent for Ontario
Toronto, Ont.

GUY TOMBS,
G. F. and P. A., C. N. Q. R.,
Montreal, Que.



WHITE-STAR DOMINION CANADIAN SERVICE ROYAL MAIL STEAMERS

1910 — WEEKLY SAILINGS — 1910

R. M. S. "LAURENTIC" 14,892 Tons Triple Screw
R. M. S. "MEGANTIC" 14,878 Tons Twin Screw

The largest and most modern Steamers on the St. Lawrence route

H. G. THORLEY, Passenger Agent - - 41 King Street East, TORONTO



THERE is only one thing that will keep a factory going at top speed for 23 hours a day month in and month out—

IT'S DEMAND

There is only one thing that can cause such demand—

IT'S MERIT

NOBODY buys an automobile with his eyes shut. It's the evidence of the superiority of the RUSSELL that makes it sell. Some of it is evidence of a man's own eyes—some of it is the evidence of RUSSELL endurance as shown by the car's record. But it is all evidence so convincing, so unanswerable that a man buys this car when he comes to know it.

Are you buying a car this year?

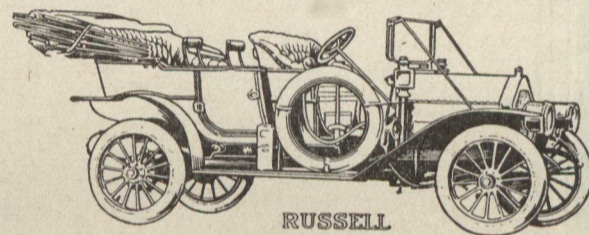
We ask the privilege of showing you the RUSSELL line and presenting the evidence.

Models from \$2,350, fully equipped, to \$5,000
Send for our catalogue to-day.

CANADA CYCLE & MOTOR CO., LIMITED

MAKERS OF HIGH GRADE AUTOMOBILES
WEST TORONTO

Branches: Toronto, Hamilton, Montreal, Winnipeg, Calgary, Vancouver, Melbourne, Aust.



The Hamilton Steel & Iron Co., Limited

PIG IRON—Foundry, Basic, Malleable.

FORGINGS of every description.

High-Grade Bar Iron. Open Hearth Bar Steel.

HAMILTON - - - - - ONTARIO

Are YOU on the list for a copy of "Tours to Summer Haunts"

— Describing —

Canadian Tours to Canadian Resorts
By the Sea.

In Quebec, New Brunswick, Nova Scotia and Prince Edward Island.
Write Advertising Department.

INTERCOLONIAL RAILWAY
MONCTON, N.B.