



3640 3640
Ladies' Basque (Copyright): 13 sizes.
Bust meas., 28 to 46 ins.
Any size, 1s. 3d. or 30 cts.

3622 3622
Ladies' Basque (Copyright): 13 sizes.
Bust meas., 28 to 46 ins.
Any size, 1s. 3d. or 30 cts.

3326 3326
Ladies' Basque (Copyright): 13 sizes.
Bust meas., 28 to 46 ins.
Any size, 1s. 3d. or 30 cts.

3823 3823
Ladies' Double-Breasted Basque (Copyright): 13 sizes.
Bust meas., 28 to 46 ins.
Any size, 1s. 3d. or 30 cts.

3503 3503
Misses' Basque (Copyright): 7 sizes.
Ages, 10 to 16 years.
Any size, 1s. or 25 cts.

3723 3723
Ladies' Basque (Copyright): 13 sizes.
Bust meas., 28 to 46 ins.
Any size, 1s. 3d. or 30 cts.



3802 3802
Ladies' Blouse, with Fitted Body-Lining (Copyright): 13 sizes.
Bust meas., 28 to 46 inches.
Any size, 1s. 3d. or 30 cts.

Ladies' Surplice Basque (Copyright): 13 sizes.
Bust measures, 28 to 46 inches.
Any size, 1s. 3d. or 30 cts.

Ladies' Basque (Copyright): 13 sizes.
Bust measures, 28 to 46 inches.
Any size, 1s. 3d. or 30 cts.

Ladies' Shirred Blouse, with Fitted Lining (Copyright): 13 sizes.
Bust meas., 28 to 46 inches.
Any size, 1s. 3d. or 30 cts.

Ladies' Blouse, with Girdle (Copyright): 13 sizes.
Bust measures, 28 to 46 inches.
Any size, 1s. 3d. or 30 cts.



3836 3836
Ladies' Basque (Copyright): 13 sizes.
Bust meas., 28 to 46 ins.
Any size, 1s. 3d. or 30 cts.

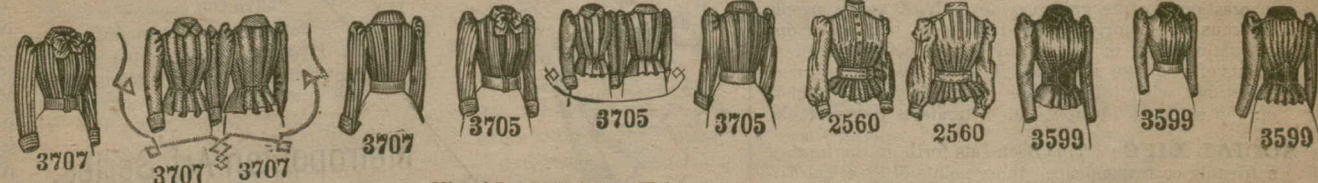
Ladies' Coat (Copyright): 13 sizes.
Bust meas., 28 to 46 ins.
Any size, 1s. 6d. or 35 cts.

Misses' Jacket (Copyright): 7 sizes.
Ages, 10 to 16 years.
Any size, 1s. or 25 cts.

Misses' Basque, with Jacket Front (Copyright): 7 sizes.
Ages, 10 to 16 years.
Any size, 1s. or 25 cts.

Misses' Basque (Copyright): 7 sizes.
Ages, 10 to 16 years.
Any size, 1s. or 25 cts.

Misses' Basque (Copyright): 7 sizes.
Ages, 10 to 16 years.
Any size, 1s. or 25 cts.



Ladies' Box-Plaited Shirt-Waist (Copyright): 13 sizes.
Bust measures, 28 to 46 inches.
Any size, 1s. 3d. or 30 cts.

Misses' Box-Plaited Shirt-Waist (Copyright): 7 sizes.
Ages, 10 to 16 years.
Any size, 1s. or 25 cts.

Misses' Blouse (Copyright): 7 sizes.
Ages, 10 to 16 years.
Any size, 1s. or 25 cts.

Misses' Blouse, with Girdle and Fitted Lining (Copyright): 7 sizes.
Ages, 10 to 16 years.
Any size, 1s. or 25 cts.



Misses' Jacket (Copyright): 7 sizes.
Ages, 10 to 16 years.
Any size, 1s. or 25 cts.

Girls' Jacket or Blazer (Copyright): 8 sizes.
Ages, 5 to 12 years.
Any size, 10d. or 20 cts.

Misses' Shirt-Waist (Copyright): 8 sizes.
Ages, 8 to 15 years.
Any size, 1s. or 25 cts.

Misses' and Girls' Cape (Copyright): 7 sizes.
Ages, 4 to 16 years.
Any size, 7d. or 15 cts.

Misses' Cape, with Bolero Collar (Copyright): 5 sizes.
Ages, 8 to 16 years.
Any size, 7d. or 15 cts.



Girls' Dress (Copyright): 8 sizes.
Ages, 5 to 12 years.
Any size, 1s. or 25 cts.

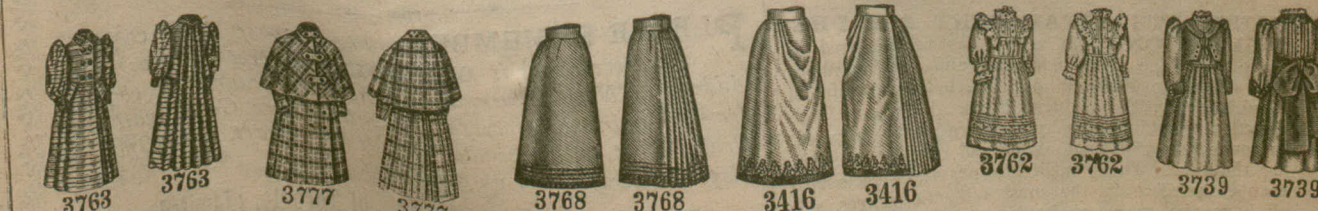
Girls' Dress (Copyright): 8 sizes.
Ages, 5 to 12 years.
Any size, 1s. or 25 cts.

Girls' Dress (Copyright): 8 sizes.
Ages, 5 to 12 years.
Any size, 1s. or 25 cts.

Little Girls' Dress (To be Worn with a Gimppe) (Copyright): 7 sizes.
Ages, 2 to 8 years.
Any size, 10d. or 20 cts.

Girls' Dress (To be Worn with a Gimppe) (Copyright): 8 sizes.
Ages, 5 to 12 years.
Any size, 1s. or 25 cts.

Girls' Coat (Copyright): 8 sizes.
Ages, 5 to 12 years.
Any size, 1s. 3d. or 30 cts.



Little Girls' Cloak (Copyright): 6 sizes.
Ages, 1 to 6 years.
Any size, 10d. or 20 cts.

Girls' Coat (Copyright): 8 sizes.
Ages, 5 to 12 years.
Any size, 1s. 3d. or 30 cts.

Misses' Walking Skirt (Also Known as the Cleopatra Skirt) (Copyright): 7 sizes.
Ages, 10 to 16 years.
Any size, 1s. 3d. or 30 cts.

Misses' Walking Skirt (Copyright): 7 sizes.
Ages, 10 to 16 years.
Any size, 1s. 3d. or 30 cts.

Little Girls' Dress (Copyright): 6 sizes.
Ages, 1 to 5 years.
Any size, 10d. or 20 cts.

Little Girls' Dress (Copyright): 6 sizes.
Ages, 2 to 7 years.
Any size, 10d. or 20 cts.