

# THE LATEST SHIPPING NEWS AND ANNOUNCEMENTS

## MINIATURE ALMANAC.

April Phases of the Moon.	D.	H.	M.
New moon	6	13	48
First quarter	14	1	39
Full moon	21	17	35
Last quarter	28	2	9

Day	Month	Star	Hour	Water	Water	Water	Water	Water	Water
1	1	1	1	1	1	1	1	1	1
2	2	2	2	2	2	2	2	2	2
3	3	3	3	3	3	3	3	3	3
4	4	4	4	4	4	4	4	4	4
5	5	5	5	5	5	5	5	5	5
6	6	6	6	6	6	6	6	6	6
7	7	7	7	7	7	7	7	7	7
8	8	8	8	8	8	8	8	8	8
9	9	9	9	9	9	9	9	9	9
10	10	10	10	10	10	10	10	10	10
11	11	11	11	11	11	11	11	11	11
12	12	12	12	12	12	12	12	12	12
13	13	13	13	13	13	13	13	13	13
14	14	14	14	14	14	14	14	14	14
15	15	15	15	15	15	15	15	15	15
16	16	16	16	16	16	16	16	16	16
17	17	17	17	17	17	17	17	17	17
18	18	18	18	18	18	18	18	18	18
19	19	19	19	19	19	19	19	19	19
20	20	20	20	20	20	20	20	20	20
21	21	21	21	21	21	21	21	21	21
22	22	22	22	22	22	22	22	22	22
23	23	23	23	23	23	23	23	23	23
24	24	24	24	24	24	24	24	24	24
25	25	25	25	25	25	25	25	25	25
26	26	26	26	26	26	26	26	26	26
27	27	27	27	27	27	27	27	27	27
28	28	28	28	28	28	28	28	28	28
29	29	29	29	29	29	29	29	29	29
30	30	30	30	30	30	30	30	30	30
31	31	31	31	31	31	31	31	31	31

## VESSELS BOUND TO ST. JOHN

Steamers.	Destination.	Agent.
East Point, 3305, London, Feb. 25.	London	W. H. Thompson & Co.
North, 2074, Progress via Newport.	Newport	W. H. Thompson & Co.
New, 3 T. Knight and Co.	London	W. H. Thompson & Co.
Kumara, 3907, London, April 2, J. T. Knight and Co.	London	J. T. Knight & Co.
Beniguel, 3534, Kurrabel, J. T. Knight and Co.	Kurrabel	J. T. Knight & Co.
Soko, 3082, Cuba, J. T. Knight and Co.	Cuba	J. T. Knight & Co.
Empress of Britain, Liverpool, April 4.	Liverpool	W. H. Thompson & Co.
Virginian, at Liverpool, April 8.	Liverpool	W. H. Thompson & Co.
Corse, at Liverpool, April 8.	Liverpool	W. H. Thompson & Co.
Rappahannock, London, March 28.	London	W. H. Thompson & Co.
Ruthenia, Trieste, via Naples, March 30.	Trieste	W. H. Thompson & Co.
Manchester Importer, Manchester, March 27.	Manchester	W. H. Thompson & Co.
Mount Royal, Antwerp, March 16.	Antwerp	W. H. Thompson & Co.
Ruthenia, Nobles, March 26.	Nobles	W. H. Thompson & Co.
Cassandra, at Glasgow, March 31.	Glasgow	W. H. Thompson & Co.
Athena, at Glasgow, April 8.	Glasgow	W. H. Thompson & Co.
Benin, Leth, April 7.	Leth	W. H. Thompson & Co.

## VESSELS IN PORT.

Steamers.	From.	Agent.
Montreal, 3552, C. P. R.	Montreal	W. H. Thompson & Co.
Bois, 2074, J. T. Knight and Co.	London	J. T. Knight & Co.
Saturia, 494, Robt. Reford Co.	London	Robt. Reford Co.
Tronto, 3055, J. T. Knight and Co.	London	J. T. Knight & Co.
Bengore Head, 1,619, Wm. Thomson & Co.	London	W. H. Thompson & Co.
Ruthenia, 4714, C. P. R.	London	W. H. Thompson & Co.
St. John, 4848, Wm. Thomson & Co.	London	W. H. Thompson & Co.
Bray Head, 1954, Robt. Reford Co.	London	Robt. Reford Co.
Saturia, 494, Robt. Reford Co.	London	Robt. Reford Co.
Manchester Importer, 3444, Wm. Thomson & Co.	London	W. H. Thompson & Co.
Ruthenia, 4714, C. P. R.	London	W. H. Thompson & Co.
St. John, 4848, Wm. Thomson & Co.	London	W. H. Thompson & Co.
Bray Head, 1954, Robt. Reford Co.	London	Robt. Reford Co.
Saturia, 494, Robt. Reford Co.	London	Robt. Reford Co.
Manchester Importer, 3444, Wm. Thomson & Co.	London	W. H. Thompson & Co.

## PORT OF ST. JOHN, N. B.

Arrived Thursday, April 10.	Agent.
Steamer Ruthenia, 4714, Kendall, Trieste via Naples, C. P. R. pass and general cargo.	W. H. Thompson & Co.
Steamer St. John, 4848, London and Havre, Wm. Thomson & Co. mds and pass.	W. H. Thompson & Co.
Coastwise—Schrs. Effe May, 67, Tingley, Joggins; Maple Leaf, 98, Baird, Parrsboro; Emily, 59, Antle, Five Islands; Lena, 50, Desmond, Matland; stmr. Connors Bros., 64, 48, Rof, Alma and Eld; sch. Edna May, 60, Woods, Parrsboro.	W. H. Thompson & Co.
Cleared.	
Schooner R. Bowers (A.M.) Kelson, Vineyard Haven, F. O. Alex Watson & Co. H. Hesperian, Main, Liverpool Wm. Thomson & Co.	W. H. Thompson & Co.
Steamer Victorian, Outram, Liverpool via Halifax, Wm. Thomson & Co.	W. H. Thompson & Co.
Sailed.	
Schooner Priscilla, Granville, Boston, Steison, Cutler & Co.	W. H. Thompson & Co.

## DOMESTIC PORTS.

Arrived Thursday, April 10.  
Steamer Ruthenia, 4714; Kend  
Trieste via Naples, C. P. R. pass  
general cargo.  
Steamer Sicilian, 4848, London  
Havre, Wm Thomson & Co., mds  
pass.  
Coastwise—Schrs Effie May,  
Tingley, Joggins; Maple Leaf,  
Baird, Parrsboro; Emily, 59, An  
Five Islands; Lena, 50, Desm  
Maitland; stmrn Connors Bros.  
48, Ro'l, Alma and cld; Schrs E  
May, 60, Woods, Parrsboro.

## BRITISH PORTS.

Schooner R Bowers (Am). Ken  
Vineyard Haven, f. o. Alex Wat  
& Co.

Steamer Hesperian, Main, Liver  
Wm Thomson & Co.

Steamer Victorian, Outram, Li  
pool via Halifax, Wm Thomson  
Co.

Sailed.

Schooner Priscilla, Granville,  
ton, Stetson, Cutler & Co.

---

**DOMESTIC PORTS.**

Weymouth April 9.—Arrd schr

## FOREIGN PORTS.

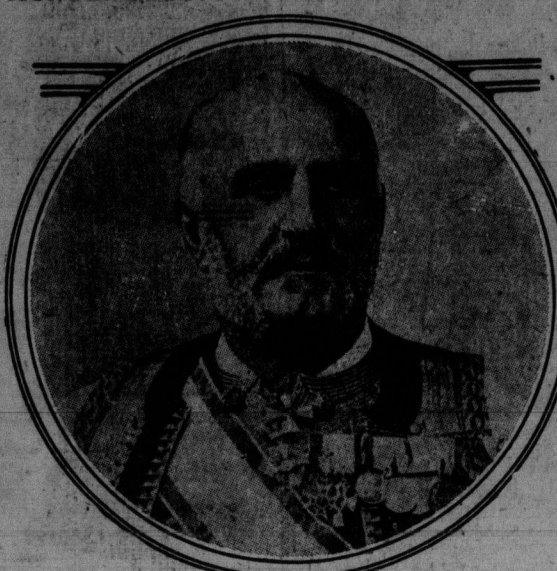
Salem, St. John.  
 Sid April 9, stmr Norheim (N)  
 West Indies; Florida (Fr),  
 York; Tabasco, Liverpool; TH  
 Menier, St Johns; Iona, New  
 News.

---

## BRITISH PORTS.

Liverpool, April 9.—Arrd stmr  
 talm, St John, N B.  
 London, April 9.—Arrd stmr  
 Michigan, St John.  
 Belfast, April 8.—Arrd stmr  
 St John N B.

## MONTENEGRO TO FIGHT FOR SCUTARI.



NICHOLAS I

King Nicholas, of Montenegro, is determined to capture and hold Scutari, according to reports at Cetinje, where it is declared that the King made the following statement:

"I assure you that I and my people mean to keep the land we have retaken during the war. We mean to take Scutari and mean to keep it. That is the dominating impulse of the Montenegrins, who know too well that it is far better to die fighting than to go on living as we are doing now."

The King stated that the possession of the fertile lands of the Zeta Valley was a question of life and death to his country and that his people were prepared to defy the will of Europe and fight for victory or extermination.

"Scutari will be my capital in the future," declared the King in conclusion.

## DANGERS TO NAVIGATION.

New York, April 9.—Stmr. Chippewa reports April 2, at 41 01 N, lon 71 41 W, passed a black bell buoy. Stmr. Stampalia (Ital) reports March 31, at 40 30 N, lon 73 W, passed a black buoy marked "8". U. S. stmr. Bache reports April 1, about 3 miles E (true) from Jupiter, passed a piece of timber about 30 feet long and 14 inches square. Stmr. Ponce reports March 24, encountered bearing N (true), about 11 miles distant, passed a red buoy covered with marine growth. Stmr. El Valle reports March 31, at 24 37 N, lon 83 12 W, passed several large pieces of timber about 40 feet long and 12 inches square. Stmr. Wilhelm reports March 30, at 26 26 N, lon 83 W, passed a mast standing upright and projecting about 10 feet out of water, apparently attached to submerged wreckage; mast head painted white. Stmr. Monarch reports March 18, at 35 30 N, lon 43 40 W, passed two large hogheads nearly submerged. Stmr. Pure Light (Am) reports March 27, at 45 28 N, lon 43 40 W, saw several small pieces of ice from 40 to 60 feet in area and about 6 feet high. Canadian Signal Service reports ice as follows: Cape Ray, April 2 and 3, heavy, close packed ice everywhere; Point Amour, April 2, 3 and 4, heavy, close packed ice; Cape Magdalen, April 3 and 4, light open ice distant. Stmr. Bruce reports April 3, about 35 miles S W of Cape Ray, light, close packed ice.

## STRUCK BY STEAMER.

Vineyard Haven, April 7.—Sch. Forest City, from Jacksonville for Boston, while anchored about 2 miles from Cross Rip lightship, was struck and badly damaged by Stmr. Peter H. Crowell, from Boston for Newport News, early today. The schooner's cargo of fish kept her from sinking and she was towed here by the Crowell and beached. The Crowell struck her amidships on starboard side. No one injured. The schooner will have to be patched by divers, pumped out and towed to Boston. The stem of the Crowell is badly twisted and some of the plating bent. She proceeded soon after leaving the schooner here.

## SCHOONER TOTAL LOSS.

Sch. John Swan, from Ponce for St. Andrews Bay, Fla., is ashore at Cayo Romano, west of Neuvitas, and will be a total loss; crew saved.

## BRIDGE WASHED AWAY.

Cardiff, Mar. 26.—Str. Triganc (Fr) from Dundee for New York, which put in here, had bridge washed away, hatches stove in and other damage during bad weather.

## DAMAGED BY STORMS.

Antwerp, Mar. 28.—Str. Cornish City from Gulfport via Mobile reports having grounded while leaving the latter port, but floated with assistance of a tug. The vessel experienced heavy weather on the voyage, during which she took a list and some deck cargo got adrift, in consequence of which bulwarks, stanchions, steam winches and steering gear were damaged; to clear the list it was necessary to jettison some deck cargo.

## SHIPPING DISASTERS.

London, April 8.—Str. Ernesto (Sp), from Port Arthur, etc., for Randers, before report ashore at Randersford at the mouth of the River Guden, and which was refitted yesterday, has again grounded. A telegram received from Honolulu states that bark S. C. Allen has been damaged by fire. (The Allen arrived at Honolulu March 16 from Grays Harbor.) Stmr. Monarch reports March 18, at 35 30 N, lon 43 40 W, passed two large hogheads nearly submerged. Stmr. Pure Light (Am) reports March 27, at 45 28 N, lon 43 40 W, saw several small pieces of ice from 40 to 60 feet in area and about 6 feet high. Canadian Signal Service reports ice as follows: Cape Ray, April 2 and 3, heavy, close packed ice everywhere; Point Amour, April 2, 3 and 4, heavy, close packed ice; Cape Magdalen, April 3 and 4, light open ice distant. Stmr. Bruce reports April 3, about 35 miles S W of Cape Ray, light, close packed ice.

## WILL RELIEVE STR. COBB.

Str. Prince George, which was hauled off the Boston-Yarmouth, N. S. route recently, came off the Simpson dry dock, East Boston, Tuesday and in about a week will probably leave for the Florida coast to relieve the Str. Governor Cobb on the route between Key West and Havana.

## MADE GOOD VOYAGE.

C. N. R. line steamer Royal Edward which arrived at Halifax on Wednesday made the passage in five days and twenty hours. This fast voyage was not made in altogether favorable weather conditions, as the ship's log showed head winds and seas on the first day, strong following beam wind and sea, strong northwest winds and rough seas interspersed through the trip. The ship's daily runs were as follows: April 3rd, 443; 4th, 448; 5th, 448; 6th, 430; 7th, 381; 8th, 456; to Halifax 439 miles. The Royal Edward was in communication with the ice patrol boat the Scotia, on the 5th of April. She had not then reached the ice fields, but was bound for them. On that day she wired the Edward: "Have no report of ice at 8 a.m. In 49.12N., 32.25 W." After the 11th of April all ships resume the northern track, which is about 200 miles north of the present south track. The Royal Edward brought 1,162 passengers, made up of 51 first, 489 second and 681 third saloon. The majority of them were bound for the West and Middle West.

## STEAMER CONNORS BROS.

St. Andrews Beacon: Some important changes have been made on board the steamer Connors Bros. By partitioning the large cabin in the forward part of the vessel, separate cabins have been provided for ladies and gentlemen. Both have been comfortably furnished with sleeping berths, lounges and lockers, with life belts close at hand in the event of accident. By an addition to the forward part of the house room has been found for a commodious saloon and dining saloon. A large and properly equipped life-boat has been added to the steamer's equipment.

## A FURTHER SOUTHERLY LANE.

London, April 10.—Next Tuesday the anniversary of the collision of the steamer Titanic with an iceberg, will be the date for liners this year to set a still further southerly course than that which was adopted last January. This decision was reached at a recent meeting of the trans-Atlantic steamship companies in Brussels with the understanding that a still further modification of the lane is to be made in the event of abnormal ice conditions.

## HARBOR FRONT NOTES.

The Furness Line steamer Shenandoah, for London took away Canadian wheat, including 32,324 bushels of wheat, valued at \$43,264. The Allan Line steamer Sicilian, Capt. Peters, arrived yesterday from London and will have general cargo and passengers. The steamer Benin, Capt. Cole, sailed from Leth on the 7th inst. for St. John. The C. P. R. line steamer Mount Royal, Capt. Gillies from London and Antwerp for St. John, was 110 miles SE. of Sable Island at 8 pm Wednesday. The Allan Line steamer Victorian, Capt. Outram, will sail today at 1 o'clock for St. John, Halifax with clock for the passenger. The Allan Line steamer Parisian, from Glasgow for Halifax, which sailed last Saturday, has 960 passengers on board.

## STEAMSHIPS.

### THE MARITIME STEAMSHIP CO. (Limited).

Until further notice the S. S. Connors Bros. will run as follows: Leave St. John, N. B. for London, via Liverpool, on Saturday, 23rd inst. for St. Andrews, calling at Dipper Harbor, Beaver Harbor, Black Harbor, Back Bay, Leth, Dipper Harbor, St. George, returning, leave St. Andrews Tuesday for St. John, calling at Leth, Back Bay, Black Harbor, Beaver Harbor and Dipper Harbor, Tide and weather permitting.

### Agent: THORNE WHARF & WAREHOUSING CO., St. John, N. B.

"Phone 77, Manager, Lewis Connors, Black Harbor, N. B." This company will not be responsible for any debts contracted after this date without a written order from the Company or Captain of the steamer.

## RAILWAYS.

### INTERCOLONIAL RAILWAY

#### Very Low Fares

#### Second Class to THE PACIFIC COAST

March 15th to April 15th, 1913

TO VANCOUVER, B. C. FROM St. John \$62.65

TO SEATTLE, WASH. FROM St. John \$62.65

TO PORTLAND, ORE. FROM St. John \$62.65

TO LOS ANGELES, CAL. FROM St. John \$62.65

TO SAN FRANCISCO, CAL. FROM St. John \$62.65

TO SAN DIEGO, CAL. FROM St. John \$62.65

TO SAN JOSE, CAL. FROM St. John \$62.65

TO SAN ANTONIO, TEX. FROM St. John \$62.65

TO SAN CARLOS, TEX. FROM St. John \$62.65

TO SAN ANTONIO, TEX. FROM St. John \$62.65

TO SAN CARLOS, TEX. FROM St. John \$62.65

TO SAN ANTONIO, TEX. FROM St. John \$62.65

TO SAN CARLOS, TEX. FROM St. John \$62.65

TO SAN ANTONIO, TEX. FROM St. John \$62.65

TO SAN CARLOS, TEX. FROM St. John \$62.65

TO SAN ANTONIO, TEX. FROM St. John \$62.65

TO SAN CARLOS, TEX. FROM St. John \$62.65

TO SAN ANTONIO, TEX. FROM St. John \$62.65

TO SAN CARLOS, TEX. FROM St. John \$62.65

TO SAN ANTONIO, TEX. FROM St. John \$62.65

TO SAN CARLOS, TEX. FROM St. John \$62.65

TO SAN ANTONIO, TEX. FROM St. John \$62.65

TO SAN CARLOS, TEX. FROM St. John \$62.65

TO SAN ANTONIO, TEX. FROM St. John \$62.65

TO SAN CARLOS, TEX. FROM St. John \$62.65

TO SAN ANTONIO, TEX. FROM St. John \$62.65

TO SAN CARLOS, TEX. FROM St. John \$62.65

TO SAN ANTONIO, TEX. FROM St. John \$62.65

TO SAN CARLOS, TEX. FROM St. John \$62.65

TO SAN ANTONIO, TEX. FROM St. John \$62.65

TO SAN CARLOS, TEX. FROM St. John \$62.65

TO SAN ANTONIO, TEX. FROM St. John \$62.65

TO SAN CARLOS, TEX. FROM St. John \$62.65

TO SAN ANTONIO, TEX. FROM St. John \$62.65

TO SAN CARLOS, TEX. FROM St. John \$62.65

TO SAN ANTONIO, TEX. FROM St. John \$62.65

TO SAN CARLOS, TEX. FROM St. John \$62.65

TO SAN ANTONIO, TEX. FROM St. John \$62.65

TO SAN CARLOS, TEX. FROM St. John \$62.65

TO SAN ANTONIO, TEX. FROM St. John \$62.65

TO SAN CARLOS, TEX. FROM St. John \$62.65

TO SAN ANTONIO, TEX. FROM St. John \$62.65

TO SAN CARLOS, TEX. FROM St. John \$62.65

TO SAN ANTONIO, TEX. FROM