

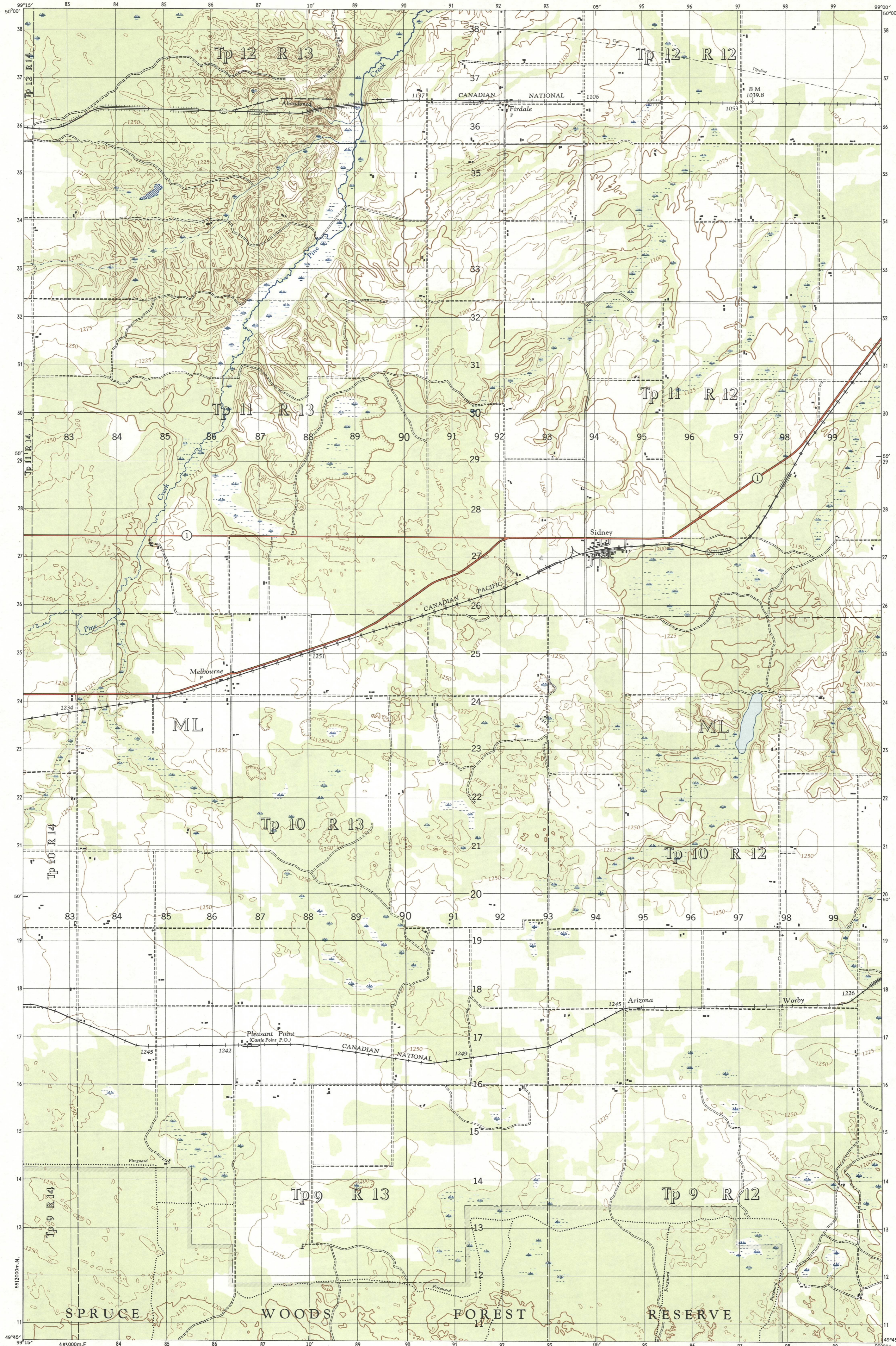
MANITOBA

1:50,000

CARBERRY

Second Edition

62 9/14 EAST HALF

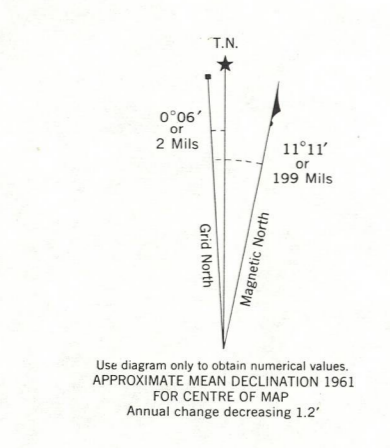


Refer to this map as: 62 9/14 E EDITION 2 ASE SERIES A 743

CANADA
DEPARTMENT OF NATIONAL DEFENCE
ARMY SURVEY ESTABLISHMENT

REFERENCE

- Roads:
 hard surface, all weather, more than 2 lanes Part completed
 hard surface, all weather, 2 lanes Route less than 2 lanes
 loose surface, all weather, more than 2 lanes All weather
 loose surface, less than 2 lanes All weather Dry weather
 Cart Track, Footpath Trail Cart Track Footpath or Trail
 Special, Snow Road, etc.
- Railways:
 standard gauge, multiple track
 standard gauge, single track
 narrow gauge, multiple track
 narrow gauge, single track
 Tramway
 Bridge, underpass or overpass
 Boundary, International
 Province or State
 County or District
 Township, Seignior or Parish
 City or Town
 Reservation, Indian, Military, etc.
- Electric Power Line
 Telephone, trunk route
 Triangulation Station
 Boundary Mon.
 Bench Mark
 Spot Elevation, (in feet)
 House, Barn
 Buildings
 Mill or Factory, small, Saw Mill, etc.
 School
 Church
 with conspicuous Tower or Spire
 Post Office
 Telephone Exchange
 Mine or Open Cut
 Cemetery or Churchyard
 Quarry
 Sand or Gravel Pit
 Cliff
 Cutting
 Embankment
 Lighthouse
 Wharf or Pier
 Foreshore Flats
 Swamp or Marsh
 Lake or Slough, intermittent
 Glacier or Snowfield
 Stream, intermittent
 Irrigation Canal, Ditches
 Inundated Land
 Contours, elevation
 depression
 approximate
 Relief, not indicated by Contours
 Wooded Areas, etc.



TO GIVE GRID REFERENCE ON THIS SHEET
 FIGURES, IGNORE THE SMALLER FIGURES PRINTED ALONG THE MARGIN
 OF THE MAP. THESE ARE FOR FINDING THE FULL CO-ORDINATES
 USE ONLY THE LARGER FIGURES PRINTED IN THE MARGIN OR
 ON THE FACE OF THE MAP. VIZ. 483

POINT CHURCH	
FOR STANDARD MILITARY GRID REFERENCE	
East	North
Take West edge of square in which point is located the figure printed opposite this line on North or South margin of the map. From west edge, measure East	Take South edge of square in which point is located the figure printed opposite this line on East or West margin of the map. From south edge, measure North
97	19
9	1
979	191
STANDARD MILITARY GRID REFERENCE 979191 (To nearest 100 Metres)	
Nearest similar grid reference 100,000 Metres (Approximately 63 Miles)	

ONE THOUSAND METRE
UNIVERSAL TRANSVERSE MERCATOR GRID
ZONE 14

INDEX TO ADJOINING SHEETS

100°00'	99°00'
62 1/4	62 1/3
62 2/3	62 3/4
62 9/12	62 10/12

See "Index to Maps Available"
for sheets published.

The general public may obtain copies from the
Map Distribution Office, Dept. of Mines and Technical
Surveys, Ottawa, at 25 cents per copy.

CARBERRY
62 9/14 EAST HALF
SECOND EDITION

**SUPERSEDED
EDITION**

Compiled 1950 by the ARMY SURVEY ESTABLISHMENT, R.C.E.,
from air photographs taken in 1948. Culture check 1961.
Printed 1962.

