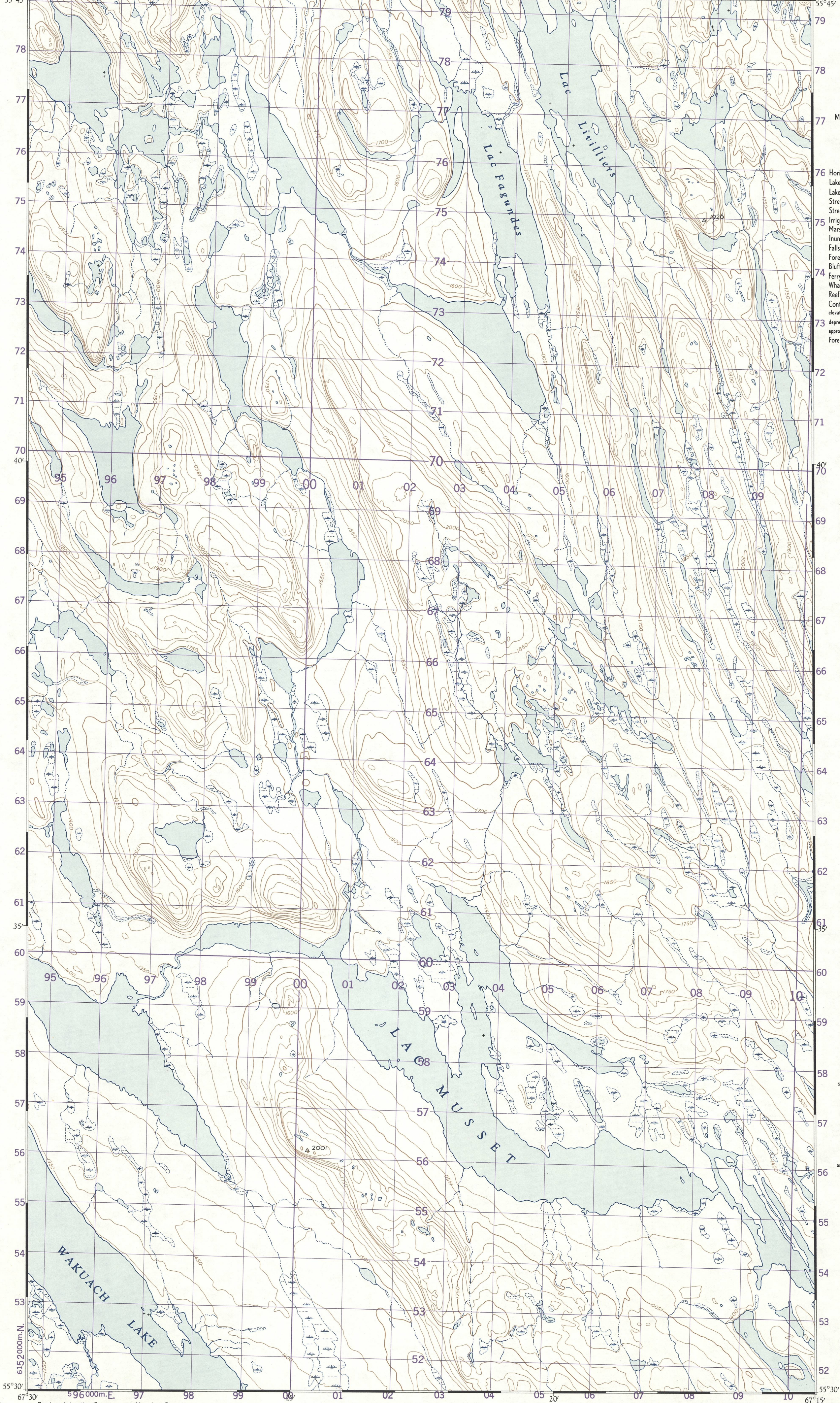


Refer to this 23°11'W  
Map as : EDITION 1 ASE

NATIONAL TOPOGRAPHIC SERIES 1:50,000 LAC MUSSET FIRST EDITION SHEET 23°11' WEST HALF

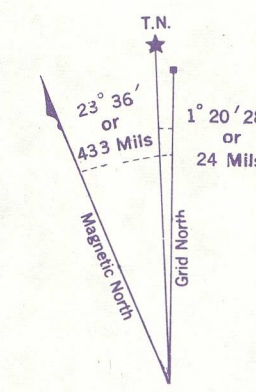


CANADA  
DEPARTMENT OF  
MINES AND TECHNICAL SURVEYS  
SURVEYS AND MAPPING BRANCH

REFERENCE

- 76 Horizontal Control Point
- Lake, intermittent or Slough
- Lake or Shoreline, indefinite
- Stream, intermittent or dry
- Stream, indefinite
- Irrigation Canal or Ditch
- Marsh or Swamp
- Inundated Land
- Falls; Rapids
- Foreshore Flats
- Bluff; Cliff or Escarpment
- Fer
- Wharf or Pier
- Reef; Rock or Small Island
- Contours:
  - elevation
  - depression
  - approximate
- Forest

This map sheet area is open except for scattered woods in the gulches.



Use diagram only to obtain numerical values.  
APPROXIMATE MEAN DECLINATION 1954  
FOR CENTRE OF SHEET  
Annual magnetic change 3' easterly

TO GIVE GRID REFERENCE ON THIS SHEET  
FIGURES, IGNORE THE SMALLER FIGURES PRINTED AROUND THE MARGIN OF THE MAP. THESE ARE FOR FINDING THE FULL COORDINATES. USE ONLY THE LARGER FIGURES PRINTED IN THE MARGIN OR ON THE FACE OF THE MAP. - Vic. 595

POINT FOR HORIZONTAL CONTROL POINT FOR STANDARD MILITARY GRID REFERENCE	
East	North
Take West edge of square in which point lies, and read the figure printed opposite this line on North or South margin or on the line itself on the face of the map. (Continue north Southward)	Take South edge of square in which point lies, and read the figure printed opposite this line on East or West margin or on the line itself on the face of the map. (Continue north Southward)
002	562
STANDARD MILITARY GRID REFERENCE 002562 (To nearest 100 Metres)	
Nearest similar grid reference: 100,000 Metres (Approximately 63 Miles)	

ONE THOUSAND METRE  
UNIVERSAL TRANSVERSE MERCATOR GRID  
ZONE 19

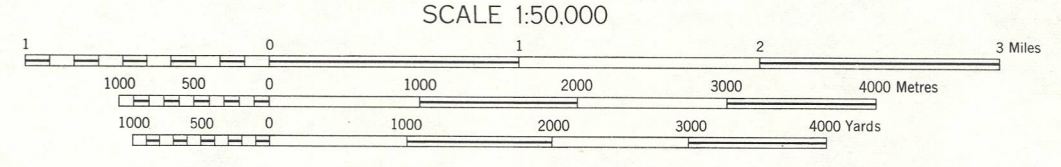
INDEX TO ADJOINING SHEETS

68°00'	23 013	23 014	23 015	68°30'
	LAC RIBERO	LAC CRAMOLET	LAC VANES	
57°00'	23 012	23 011	23 010	
	WAKUACH LAKE	LAC MUSSET	AHR LAKE	
56°00'	23 011	23 010	23 009	
	HELIVA LAKE	LAC LE FER	BACCHUS LAKE	
55°00'	68°00'	68°30'	68°00'	68°30'

MAGNETIC DECLINATION 26° 36' WEST,  
AT CENTRE OF SHEET 1951.  
Annual magnetic change 3' easterly.

LAC MUSSET  
QUEBEC  
23°11' WEST HALF  
FIRST EDITION

Produced by the Surveys and Mapping Branch,  
Department of Mines and Technical Surveys, 1952,  
from air photographs taken in 1948.  
Printed by the Army Survey Establishment, R.C.E.,  
Department of National Defence, 1954.  
Copies may be obtained from the Map Distribution  
Office, Department of Mines and Technical Surveys,  
Ottawa, at 25 cents per copy.



CONTOUR INTERVAL 50 FEET  
Elevations, in feet, based on Geodetic Vertical Angulation referred to sea level.  
North American Datum 1927  
CONVERSION SCALE FOR ELEVATIONS

SUPERSEDED EDITION

McGILL UNIVERSITY  
MAP COLLECTION  
NOV 4 1971  
GEOGRAPHICAL INSTITUTE  
MONTREAL