

# The Canadian Spectator.

VOL. I., No. 32.

SATURDAY, AUGUST 10, 1878.

\$2.00 PER ANNUM.

## The Canadian Spectator.

EDITED BY THE REV. A. J. BRAY.

YEARLY SUBSCRIPTION - - - - Two DOLLARS  
(postage included.)

Published every Friday at 162 St. James Street,  
Montreal.

### ALL

SHOULD READ

THE "CANADIAN SPECTATOR."

A HIGH-CLASS LITERARY WEEKLY  
JOURNAL,

Edited by the Rev. ALFRED J. BRAY.

NON-PARTISAN—NON-SECTARIAN,

TREATING ALIKE

On all the Most Important  
Questions of the Day,

and bringing to bear on the subjects treated an

UNBIASED and UNPREJUDICED  
JUDGMENT.

Contributed to by the greatest men of the day.

Annual Subscription \$2, including Postage.

This paper is also a valuable medium for adver-  
tising.

162 ST. JAMES STREET,  
MONTREAL.

## LIGHT WINES

AND OTHER

SUMMER BEVERAGES.

500 cases CLARET quarts and pints,

500 cases CHAMPAGNE,

(All the best Brands).

SPARKLING MOSELLE,

SPARKLING BURGUNDY,

HOCK SAUTERNE,

MINERAL WATERS,

OLD BRANDIES,

PORTER, ALE, &c.

Orders by letter or telegraph promptly filled.

McGIBBON & BAIRD,

IMPORTERS, &c.

"GOOD BOOKKEEPING, to a man of business,  
is equal to one-half of his capital."—*Mr. Com-  
missioner Ponblanque, Court of Bankruptcy, London.*  
DAY'S COMMERCIAL COLLEGE, TO-  
RONTO, (Established 1862), a select Business School  
for young men. Advantages offered: Individual and  
thorough instruction by an experienced Accountant,  
and course of study arranged to meet the capacity of  
pupils. For terms of study, prepaid, JAMES E. DAY,  
College Rooms, 96 King Street West Toronto.

EVANS & RIDDELL,  
PUBLIC ACCOUNTANTS

EDWARD EVANS, Official Assignee,

Western Chambers,

No. 22 ST. JOHN STREET.

## LIGHT!! LIGHT!!

LAMPS, CHANDELIERS, PENDANTS.

Handsome display of finest goods, with all latest  
improvements.

PRICES LOW.

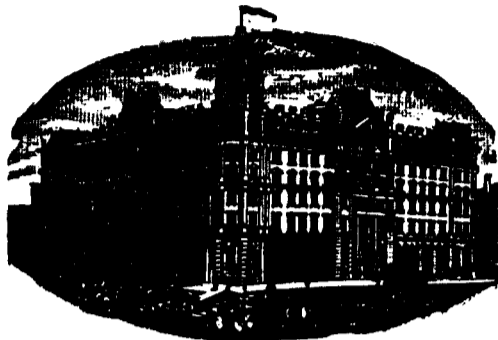
FRED. R. COLE,  
LAMP AND OIL DEPOT,  
98 ST. FRANCOIS XAVIER STREET.

THE PEOPLE'S FAVORITE,  
THE OLD ESTABLISHED  
Cooks' Friend Baking Powder,  
PURE,

HEALTHY,  
RELIABLE.

Manufactured only by  
W. D. McLAREN,  
55 and 57 College St.

Retailed everywhere.



## THE WINDSOR HOTEL, MONTREAL.

This Hotel has special advantages for the comfort of guests; with special parlours and promenades. Its  
location is high, which insures pure air, with views of the River and Mountain.  
Has a room for commercial men at 117 St. Francois Xavier Street.

Rates - - - - \$2.50 per day, and upwards.

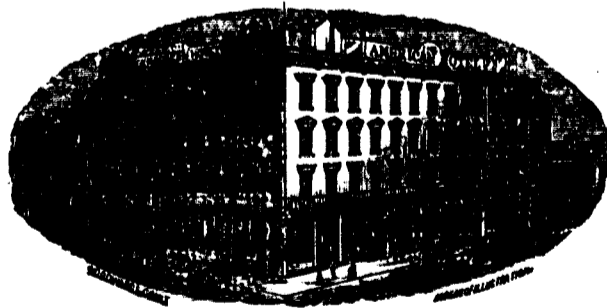
JAMES WORTHINGTON, Proprietor.



## THE QUEEN'S HOTEL,---TORONTO, CANADA,

McGAW & WINNETT, PROPRIETORS.

Patronized by Royalty and the best families. Prices graduated according to rooms.



## AMERICAN HOTEL, TORONTO.

Reduced the Rates so as to meet the Times.

Seventy fine Rooms at \$2.00, and seventy fine at \$1.50.  
Incontestably the most central and convenient Hotel in the city, both for commerce and family travel.  
Three minutes walk from the Union and Great Western Depots; and first-class in every respect, except  
price.

GEORGE BROWN, Proprietor.

## H. A. NELSON & SONS,

IMPORTERS AND WHOLESALE DEALERS IN

EUROPEAN AND AMERICAN FANCY GOODS, DRUGGISTS', TOBAC-  
CONISTS', STATIONERS' AND GROCERS' SUNDRIES.

FANS—American, French and Japanese.

POCKET-BOOKS in Russia, Calf, Morocco, Sheepskin, &c.

Ladies' and Gents' TRAVELLING BAGS a specialty.

BABY CARRIAGES, TOY CARTS, VELOCIPEDES, &c., &c.

56 & 58 FRONT STREET, WEST,

TORONTO.

91 to 97 ST. PETER STREET,

MONTREAL.

## SHIRTS! SHIRTS!

A. H. SIMS & CO.,

Montreal,

MANUFACTURERS OF

SHIRTS,

COLLARS,

AND

CUFFS,

WHOLESALE.

Orders from the trade solicited.

## THE OTTAWA RIVER NAVIGATION CO.

Daily direct river route between MONTREAL and  
OTTAWA. (Mail Steamers.) Passengers by Day  
Boats leave by 7:15 a.m. Train for Lachine, to con-  
nect with Steamer. Return Tickets at Reduced Rates.

EXCURSIONS.—For DAY TRIP through Lake of  
Two Mountains to Carillon, returning OVER RAPIDS  
in evening, take 7:15 a.m. Train for Lachine, to con-  
nect with Steamer. Fare, for round trip, \$1.25.

For Excursion OVER RAPIDS, Steamer leave  
Lachine on arrival of 5 p.m. Train from Montreal.  
Fare, for round trip, 50c. Tickets at Principal Hotels  
and Grand Trunk Railway Office.

COMPANY'S OFFICE: 13 BONAVENTURE ST.

Freight forwarded daily at Low Rates, from Freight  
Office, 87 Common Street, Canal Basin.

R. W. SHEPHERD, President.



## MONTREAL & BOSTON AIR LINE AND SOUTH-EASTERN RAILROADS.

On and after MONDAY, July 1, this reliable, short  
and grand scenery route to Boston, New York, and  
all New England cities, passing Lake Memphremagog  
and White Mountains, will run

Day Express, with Parlor Car attached, leaving  
Montreal 9 a.m., arriving in Boston at 9:30 p.m.

Night Express, with Pullman Sleeping Car, leaving  
Montreal 4 p.m., arriving in Boston 8:25 a.m.

### LAKE MEMPHREMAGOG

ALL RAIL ROUTE. BEAUTIFUL SCENERY.  
NO CHANGE OF CARS.

Passing through a country noted for its beautiful  
Lake, Valley and Mountain Scenery, unsurpassed on  
the Continent.

Leave Montreal for Newport at 9 a.m. and 4 p.m.,  
Newport for Montreal, 3:35 a.m. and 4:40 p.m.

Fare to Newport and return, from Montreal, \$5.

Friday Excursion.—Tickets good from Friday  
p.m. to Monday p.m., price \$3.50, from Montreal to  
Newport and return, and to all Stations on S. O. Ry.  
at greatly reduced fares.

H. P. ALDEN, Genl Pass Agt S E Ry. A. B. FOSTER, Mgr S E Ry.

G. LEVE, Can Agt M & B Air Line and S E Ry.

### EUROPEAN TRAVEL.

Cabin, Intermediate and Steerage Passage Tickets  
to all parts of Europe, by most reliable lines, sailing  
every WEDNESDAY, THURSDAY and SATUR-  
DAY from New York and Boston, at lowest rates.

Choice Staterooms secured by telegraph, free of  
charge. Offices: 202 St. James street, Montreal, and  
271 Broadway, New York.

G. LEVE, General Agent.

## SHORTEST ROUTE VIA CENTRAL VER- MONT R. R. LINE.

Leave Montreal at 4 p.m. for New York, and 9 a.m.,  
4 and 6 p.m. for Boston.

Two Express Trains daily, equipped with Miller  
Platform and Westinghouse Air Brake. Sleeping Cars  
are attached to Night Trains between Montreal and  
Boston and Springfield, and New York via Troy; also  
between St. Albans and Boston via Fitchburg; and  
Parlor Cars to Day Express between Montreal and  
Boston.

### TRAINS LEAVE MONTREAL:

9 a.m., Day Express for Boston via Lowell.  
4 p.m., Mail for Waterloo.  
4 p.m., Night Express for New York via Troy, also  
for Boston via Fitchburg, arriving in Boston 7 a.m.,  
and New York 7:15 a.m., next morning.  
6 p.m., Night Express for Boston via Lowell, and  
New York via Springfield.

### GOING NORTH.

Day Express leaves Boston, via Lowell, at 8 a.m.,  
via Fitchburg 7:30 a.m., Troy at 7:40 a.m., arriving  
in Montreal at 8:45 p.m.

Night Express leaves Boston at 5:35 p.m., via  
Lowell, via Fitchburg 6 p.m., and New York at 3 p.m.,  
via Springfield, arriving in Montreal at 9 a.m.

Night Express leaves New York via Troy at 8:30  
p.m., arriving in Montreal 12 m., excepting Saturday  
nights, when it will leave New York at 4 p.m., arriv-  
ing in Montreal at 9 a.m. Sunday morning.

Freight and Freight Rates, apply at Central  
Vermont Road Office, 136 St. James street.  
Boston Office, 322 Washington street.

G. W. WENTLEY, J. W. HOBART,  
Genl. Manager, Genl. Supt.

S. W. CUMMINGS,  
General Passenger Agent.

Montreal, 10th June, 1878.