

Fashion Notes.

ENORMOUS bows of soft silk give the young women who wear

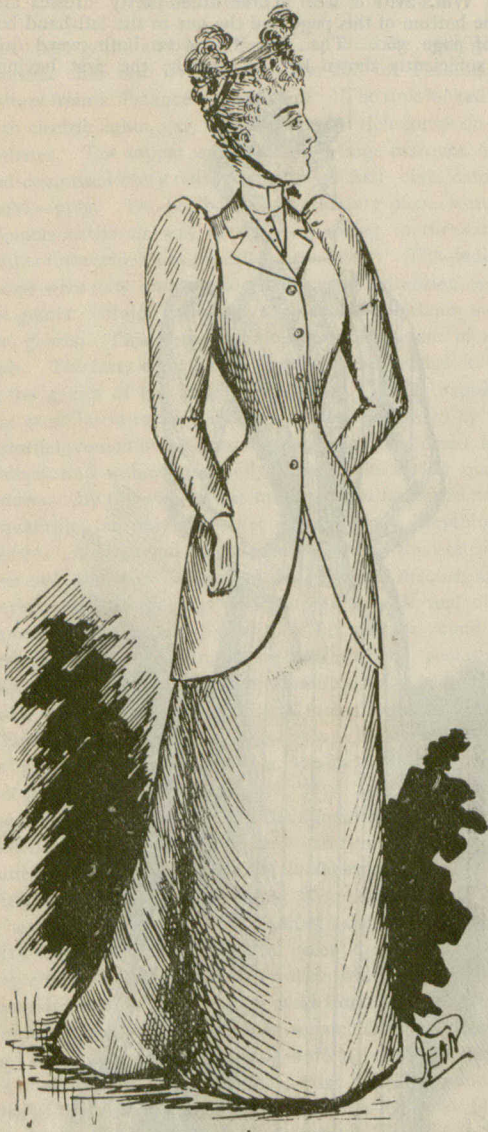
A RAINBOW fair is a pretty idea. The hall, the booths and the gowns of the fair saleswomen are all in rainbow tints, and the roof is spanned by a huge rainbow made of tinted cheese cloth. The gay coloring is extremely effective and the Rainbow fair is generally a success.

LACE is the one thing we can look upon as unchangeable for all the summer to come, all the quaint old patterns being reproduced in the loveliest white silk blonde or black Chantilly; and trees, bunches of fruit of all descriptions, Cupids and Raphaellesque designs are among the latest.

A FASHIONABLE evening bodice is of light grey silk. The Princess sash, which lays in graceful folds about the waist, is of a delicate tint of grey chiffon. At the side is a bow with long ends of rose-pink ribbon. The neck is cut round, and falling in a deep frill over the bust is a flounce of pale pink chiffon embroidered in silver.

CLOTH vests of different colors vary the monotony of an open coat; removable ones are useful as they can be changed at will;

silk. This waist-trimming is set on very scant over the shoulders, and forms a sort of cape which falls almost to the elbows at the sides, and runs to a very narrow point back and front. A long,

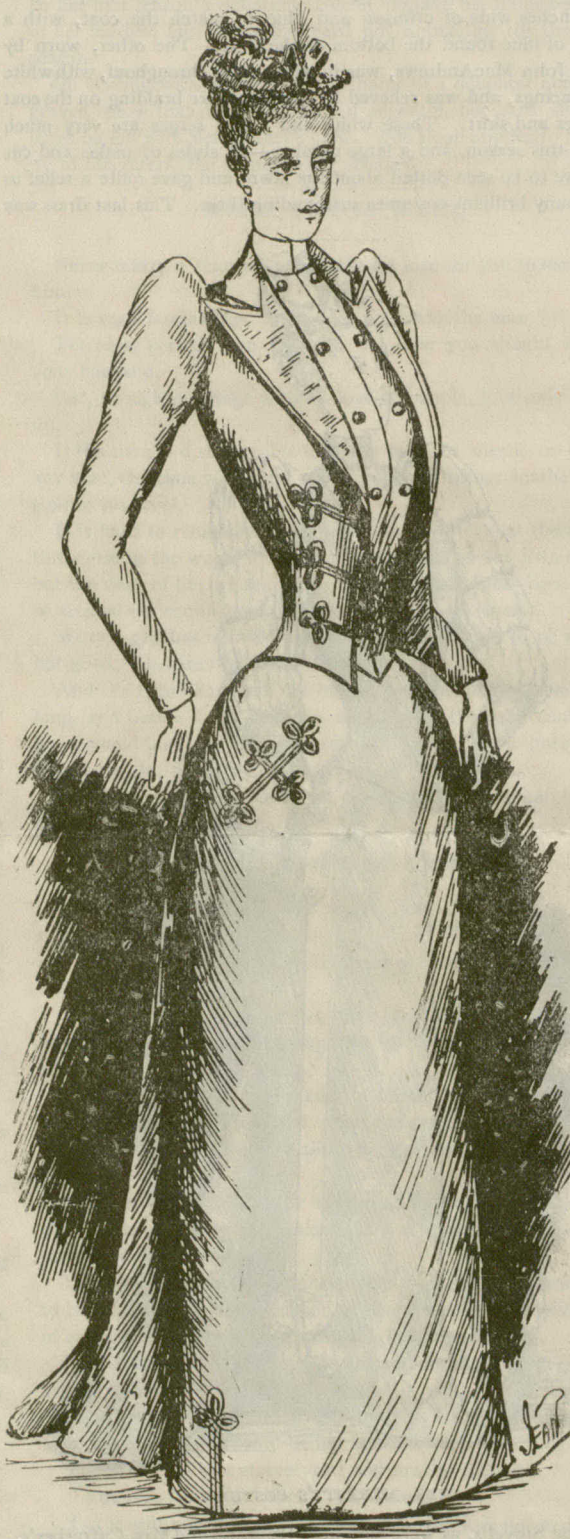


MISS SNARR'S COSTUME.

them a gay and flippant look; they are so huge that the throat seems entirely swallowed up in them.

AN ingenious female has hit upon the idea of a "dress album," in which tiny cuttings of every gown belonging to its owner are to be chronologically arranged, under the dates on which they were purchased.

THE cotton outing cloths are so nice that they are scarcely distinguishable from French flannel, the same patterns being reproduced. They are especially to be commended for children, as the colors are fast and they can be easily washed and no starching is requisite.



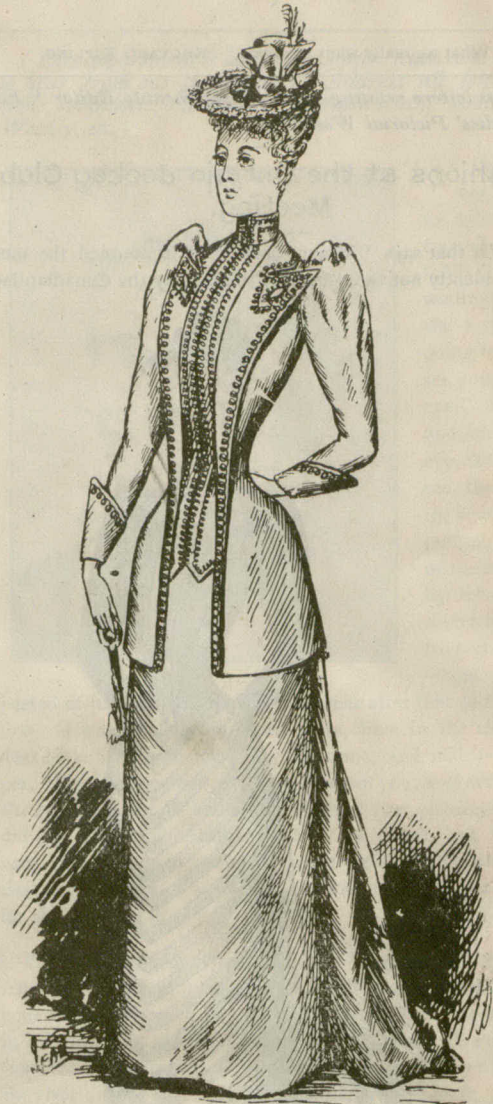
MRS. JOHN M'ANDREW'S COSTUME.

they are adjusted by a strapped back, like that in a man's vest. They are usually tailor-stitched and sometimes ornamented with embroidery. Long, square lapped waistcoats of rich brocade are worn with the Louis coats.

BRODERIE Russe is now much used for decorating the Russian blouses so much worn; the embroidery is done in the old time cross stitch. To do it cut strips of canvas and baste them on the article to be ornamented; it is executed generally in dark blue or white cotton, but that is merely a matter of taste. Blue or red cotton blouses are decorated in this way, or strips of alternating color are sewed together and embroidered in a contrasting tint.

THE ordinary street dress shows rather more simplicity of style than was promised early in the season. The favorite model for a wool dress is the bell skirt, either perfectly plain or with a gathered or slightly plaited ruffle at the hem. Long coat-basques will be worn, and a very pretty style has a pointed basque, with side-plaited frill of India silk falling some distance below the waist-line. With this frill are neck and sleeve ruchings of the same silk, the latter pinked out in small scallops.

A GREAT deal of India silk ruching and ruffling will be used on dresses of light quality of wool, whether in black or colors. A very pretty Henrietta-cloth dress has three narrow pinked ruffles of India silk, with a very deep bertha shaped waist-trimming, also of the



TAILOR-MADE COSTUME WORN AT THE RACES.

white sash of pinked silk is worn with this costume.

SOME cool summer petticoats are of grey alpaca, with a full ruche around them; others are of flowered moreen, made plain; but the most general are the fancy plaid silks, with one very deep flounce, the upper part being cut as plainly as possible. Some petticoats are most elaborate; for instance, a black silk with a cluster of tiny roses over it, would have a fall of black lace over green silk, headed by a rose pink ruche set into a wider one of green silk; or a primrose silk, with a stripe or design of pale heliotrope, would have a white lace flounce over pale heliotrope, with several runnings of the same shade of "baby" ribbon, culminating every now and then in rosettes.



SMART DRESS AT THE O. J. C. RACES.



MRS. M'CONNELL'S COSTUME.