

MUNICIPAL ENGINEERS, CONTRACTORS, AND MATERIALS.

of the river to a subsiding basin on the shore. This conduit is 6 feet wide and 5 feet high with an arched top turned to a radius of 5 feet. Above the arch, which, like the sides, is of stone masonry, the top of the trench is levelled off with concrete. Running down stream on the bank is the culvert which intercepts the sewage and polluted brook water formerly discharged above the intake. This culvert is 10 feet wide and 9 feet high, having a brick arch rounded to a radius of 5 feet and a concrete invert plastered with an inch of mortar. This culvert runs directly over the concreted top of the conduit from the intake and discharges its contents into the rapidly flowing stream below the intake.

DEBENTURES WANTED.

Municipalities issuing debentures, no matter for what purpose, will find a ready purchaser by applying to **G. A. STIMSON, 9 Toronto Street, Toronto.** N.B.—Money to loan at lowest rates on first mortgage.

Established 1841.

THOROLD CEMENT

MANUFACTURED BY
ESTATE OF JOHN BATTLE,
Thorold, Ontario.

GRAND TRUNK RAILWAY CO. OF CANADA.
CHIEF ENGINEER'S OFFICE,
HAMILTON, ONT., Oct. 17, 1893.

REPRESENTATIVES OF THE
ESTATE OF JOHN BATTLE,
THOROLD, ONT.

Gentlemen: In reply to yours of September 10th last as to the cement manufactured at the John Battle Works, Thorold, Ontario, we have been using it on this Division of the Grand Trunk Railway for many years, and have found it to be of good quality.

Yours truly,
JOSEPH HOBSON,
Chief Engineer.

WILLIS CHIPMAN, B.A.Sc.,

M. Can. Soc. C.E.; M. Am. Soc. C.E.;
M. Am. W. W. Ass'n.

CIVIL AND SANITARY ENGINEER

Water Works - Sewerage
Sewage Disposal
103 BAY STREET TORONTO.

J. McDOUGALL, C. E.,
ENGINEER COUNTY OF YORK,
Consulting Engineer for Municipal Work.

Electric Railways and Bridges.

COURT HOUSE, - TORONTO.

JOHN GALT

C. E. AND M. E., M. CAN. SOC. C. E.

Consulting Engineer.

20 Years' Practical Experience in England, United States and Canada in Civil, Sanitary, Hydraulic, and Mechanical Engineering.

SPECIALTIES:

WATERWORKS, SEWERAGE, ELECTRIC RAILWAYS.

Office: Rooms 99 and 100,
CANADA LIFE BUILDING. TORONTO.

Fire Bricks and Cement

DRAIN-AND-WATER-PIPES

SANITARY EARTHENWARE

LONDON PORTLAND CEMENT

GUARANTEED GENUINE.

Paving and Scoria Bricks for Stables, Sidewalks, Yards, etc.

Large quantities on hand and to arrive. We handle only the best quality. Prices lower than ever.

F. HYDE & CO.

31 Wellington Street, - MONTREAL,

Sole Agents for

THE "GRANTRYX" SMOKE TEST AND DISINFECTING MACHINE.

Drummond McCall Pipe Foundry Company,

MONTREAL

MANUFACTURERS OF

CAST IRON WATER AND GAS PIPES

WORKS: LACHINE, QUE.

PRICES ON APPLICATION.

Ontario Water Meter Co., Ltd.

MANUFACTURERS OF

WATER METERS

Meter Supports, Dial Extensions, Fixture Locks, Water Cart Registers, Strainers, Coupling Seals and Reservoir Indicators.

Send for Price Lists and Testimonials. Our meters are adopted and in use in over 500 cities and towns in Canada and the United States. Highly endorsed by leading Engineers. A guarantee for five years given with all Meters. All information furnished on application to

A. C. WINTON, Secretary-Treas.

Office: No. 23 Toronto Street, Toronto, Ont.

MUNICIPAL OFFICIALS

should see to it that in the erection of town and city PUBLIC BUILDINGS, the installation of water works plant, etc., the advantages of

MINERAL WOOL



are made use of for deadening sound in floors and partitions, insulation of heat and cold, fireproofing, etc., also SECTIONAL MINERAL WOOL COVERING for steam pipes, boilers, exposed water pipes, etc.

CANADIAN MINERAL WOOL CO., Limited, 127 Bay Street, Toronto.

Montreal Agent:

GEO. A. COWAN, Room 23, 204 St. James St.

GEO. R. THOMPSON & CO.,

Agents, Winnipeg, Man.

PORTLAND CEMENT

BY T AND CHEAPEST IN TORONTO.

JOSSON, PETERS and BURHAM Brands for highest class work.
WHITE HORSE, R. W., IMPERIAL, &c., FROM \$2.00 PER BARREL.

Nichols, Smythe & Co., - 25 George St., Toronto.
CEMENT CONTRACTORS TO THE CITY OF TORONTO.
Telephone 1948 or call and see us.

CANADA PIPE AND FOUNDRY CO.

MANUFACTURERS OF

. Cast Iron Pipes and Special Castings

Works: MONTREAL AND ST. HENRI, QUE.
CORRESPONDENCE SOLICITED.

THE STANDARD DRAIN PIPE CO.

OF ST. JOHNS, P. Q., (LIM.)



Manufacturers of
Salt-Glazed,
Vitrified
**SEWER
PIPES**

Double Strength
Railway Culvert Pipes,
Inverts, Vents,

AND ALL KINDS OF FIRE CLAY GOODS.

STEVENS & BURNS

London, Ont.

To Municipal Corporations and Contractors:

... WE MANUFACTURE ...

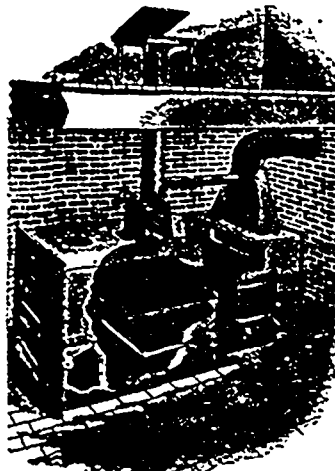
Hydrants, Valves, Valve Boxes

and Water Works Supplies generally,

INCLUDING

Tools for tapping mains under pressure

and Service Brass Work of all descriptions.



THE ENGLE CREMATING CLOSET

A SUBSTITUTE FOR PRIVY VAULTS AND CESS POOLS.

A PERFECT SANITARY TRIUMPH,

Applicable to the uses of schools, colleges, hospitals, factories, asylums and dwellings.

This closet is invaluable where sewer and water privileges are not obtainable, possessing all the convenience of the modern water closet

Manufactured and erected in sizes suitable to any number of persons, by

TORONTO FURNACE & CREMATORY CO., LTD.

8 & 10 Queen St. East, TORONTO.

WRITE FOR CATALOGUE CONTAINING FULLEST INFORMATION AND EXPLANATION.

THE G. & J. BROWN MFG. CO.

Railway and Contractors' Plant.

BRIDGE BUILDERS

BELLEVILLE, ONT.