

# MINUDIE COAL COMPANY, L't'd.

Operating the **MINUDIE MINES**

in the Celebrated  
**CUMBERLAND COAL FIELD**

Producers of High Class **SCREENED COAL, ROUND, RUN-MINE, SLACK.**

The best for Foundry or Furnace, Locomotive or

Stationary Engines, for Domestic or General use,

\* **CLEAN AND CLINKERLESS.** \*

Direct connection with the I. C. R.

Colliery

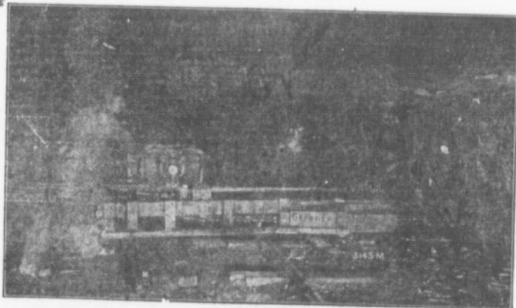
**RIVER HEBERT, N. S.**

Mine Manager:—HY. MCCARTHER.

Business Manager, R. S. HIBBARD, River Hebert, N. S.

Geo. H. Bisset, Sec'y. Treasurer.

Head Office, 212 St. James Street, Montreal.



## JEFFREY COAL MINE EQUIPMENT

### INCLUDES

Air Power and Electric  
Coal Cutting Machines and Drills.  
Main Haulage, Gathering and Grab Locomotives,  
Car Hauls, Coal Tipples, Screens, Crushers, Pulverizers, Conveyers,  
Elevators, Coal Washeries, Cages, Hoists, Fans, Pumps, Etc.  
Write for Catalog, Series I b, and mention subjects in which you are interested

**The Jeffrey Manufacturing Company, Columbus, Ohio.**

New York.  
Charleston, W. Va.

Chicago.  
St. Louis.

Knoxville,  
Denver,

Boston.  
Montreal, Can

Pittsburg  
Buffalo.