

**FIRE PROOF ROOFING**  
 STEEL IRON  
 WRITE FOR CATALOGUE  
 POLAR METAL ROOFING CO. HAWA HAWA ONT.

**The Pulsometer**  
**STEAM PUMP**

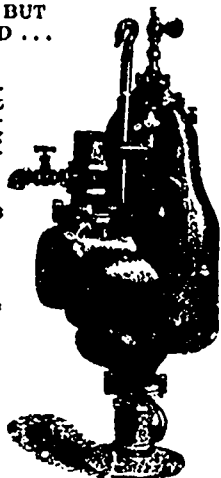
OFTEN IMITATED BUT NEVER EQUALLED . . .

The handiest simplest and most efficient steam pump for general Mining, Quarrying and Contractors' purposes.

Waddy or Critty Liquids Handled without wear.

Descriptive Catalogue with prices, furnished on application.

**PULSOMETER**  
 Steam Pump Co.  
 New York, U.S.A.



**A. R. Williams Machinery Co.**

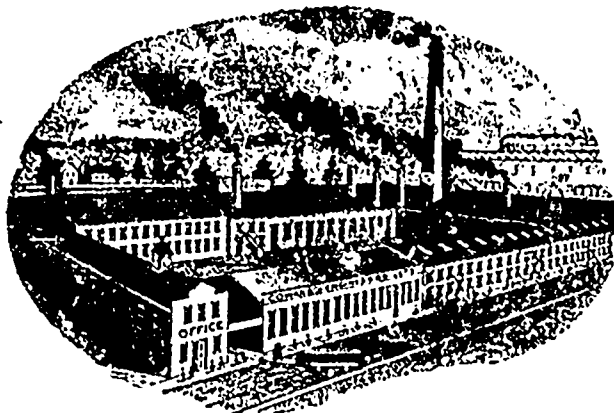
Toronto and Montreal,  
 Selling Agent for Canada.

**COWAN & CO., GALT, ONTARIO**

Manufacturers of . . .

**- Woodworking Machinery -**

Corliss and  
 Slide Valve  
 ENGINES  
 BOILERS



MOFFAT'S  
 Patent -  
 - Heaters  
 SAWMILLS

Old Wood Tools, Engines and Boilers taken as part pay on new. We have on hand a number of . . .

**Rebuilt Wood Tools  
 Engines and Boilers**

which we offer at low prices and most favorable terms.  
 WRITE FOR  
 TERMS, PRICES AND CATALOGUE



HAMILTON, CAN.

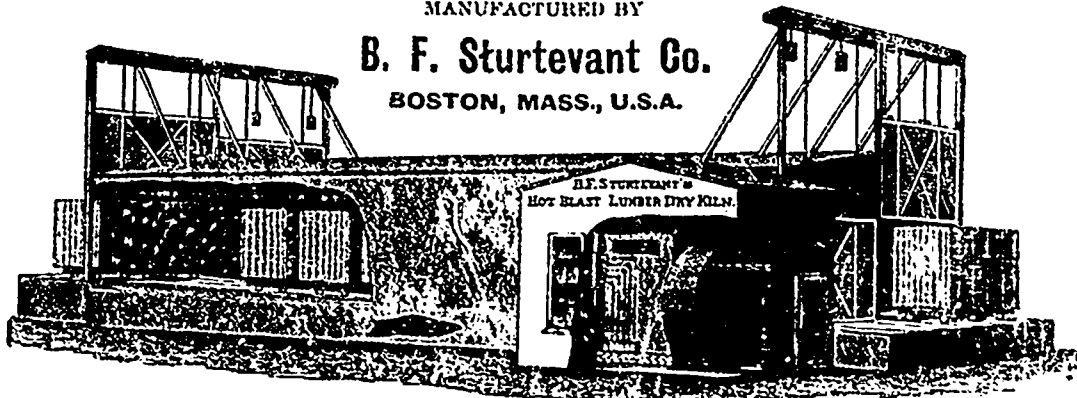
Catalogue on Application.

**The Sturtevant Progressive Lumber Dry Kiln**

Complete .  
 Plans . .  
 Furnished .  
 With . . .  
 Each . . .  
 Apparatus.

MANUFACTURED BY

**B. F. Sturtevant Co.**  
 BOSTON, MASS., U.S.A.



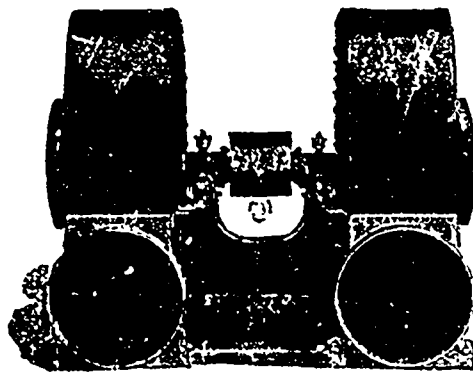
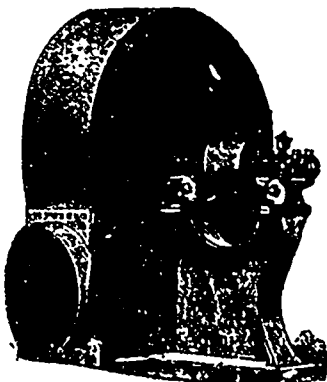
Absolutely  
 Safe . . .  
 FIRE  
 RISK  
 QUICK DRYING  
 Economical in  
 use of steam.

**THE STURTEVANT  
 Steel Plate Exhaust Fans**

For Removing Refuse  
 from Wood-working Machinery  
 SEND FOR CATALOGUES

**A. R. WILLIAMS MACHINERY CO.**

GENERAL CANADIAN AGENTS  
 TORONTO, BRANTFORD, MONTREAL



DOUBLE EXHAUSTER